

2025 Hazard Mitigation Plan

Onondaga County,
New York

**Town of Skaneateles
Annex**

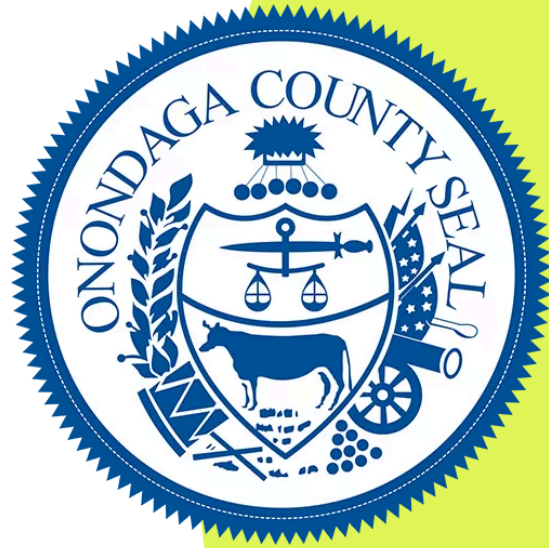




TABLE OF CONTENTS

- 1. HAZARD MITIGATION LOCAL PLANNING TEAM.....1**
- 2. MUNICIPAL PROFILE.....1**
 - 2.1. Population.....1
 - 2.2. History and Cultural Resources.....2
- 3. GROWTH/DEVELOPMENT TRENDS.....2**
 - 3.1. Changes in Priority3
- 4. CAPABILITY ASSESSMENT.....3**
 - 4.1. Planning and Regulatory Capabilities4
 - 4.2. Administrative and Technical Capabilities.....6
 - 4.3. Fiscal Capabilities7
 - 4.4. Education and Outreach Capabilities7
 - 4.5. Community Classifications.....8
 - 4.6. Self-Assessment of Capability.....8
 - 4.7. Needs to Expand/Improve Capabilities9
- 5. NATIONAL FLOOD INSURANCE PROGRAM.....9**
 - 5.1. NFIP Floodplain Administrator.....9
 - 5.2. Repetitive Loss and Severe Repetitive Loss Property10
 - 5.3. Participation Activities11
 - 5.3.1. Regulatory11
- 6. HAZARD MITIGATION PLAN INTEGRATION13**
 - 6.1. Existing Plan Integration13
 - 6.2. Potential Future Integration13
- 7. SIGNIFICANT HAZARD PAST EVENTS14**
- 8. HAZARD VULNERABILITY AND IMPACT ASSESSMENT14**
 - 8.1. Future Major Assets18
- 9. CRITICAL FACILITIES FLOOD RISK.....18**
- 10. HAZARD RISK RANKING.....19**
- 11. MITIGATION ACTIONS21**
- APPENDIX A. HAZARD MAPS.....39**
- APPENDIX B. LETTER OF INTENT43**
- APPENDIX C. PLAN ADOPTION.....44**



This Annex details the hazard mitigation elements specific to the Town of Skaneateles, a participating jurisdiction in the 2025 Onondaga County Hazard Mitigation Plan update. This Annex is not intended to be a standalone document but supplements the information contained in **Volume 1 (Countywide Planning Elements)**. Therefore, all sections of **Volume 1**, including the planning process, hazard identification and risk assessment, mitigation strategy (includes mitigation goals and objectives), and plan maintenance, apply to and were met by the Town of Skaneateles. This Annex provides additional information specific to the Town, with a focus on providing additional details on the hazard risk assessment and mitigation strategy (i.e., mitigation actions) for this community.

1. HAZARD MITIGATION LOCAL PLANNING TEAM

The following individuals have been identified as the Town of Skaneateles Local Planning Team for the 2025 Onondaga County Hazard Mitigation Plan. These individuals participated in all aspects of the planning process and developed a risk and vulnerability assessment, capability assessment, and mitigation strategy (including mitigation actions) specific to the jurisdiction.

Name	Title	Department
Robert Herrmann Jr.	Code Enforcement Officer	Building & Codes Department
Tim Dobrovosky	Highway Superintendent	Highway Department

2. MUNICIPAL PROFILE

The Town of Skaneateles lies along the southwestern border of Onondaga County with a total area of 48.8 square miles. The Town is bordered by the Town of Elbridge to the north, the Town of Marcellus to the east, and Cayuga County to the west and south. The major body of water in the Town is Skaneateles Lake, with Skaneateles Creek originating from the Lake and flowing into the Seneca River. The Village of Skaneateles is located at the north end of Skaneateles Lake. *The Village of Skaneateles has developed its own dedicated annex as part of this Plan.* There are several communities located within the Town – Highland Way, Jones Beach (hamlet), Long Bridge (hamlet), Mandana (hamlet), Mottville (hamlet), Shepard Settlement (hamlet), Skaneateles Falls (hamlet), Thornton Grove, Thornton Heights, Wicks Corner, Willow Glen, and Winding Way.

The Town is governed by a five (5) member Town Board, elected on a Townwide basis for a four (4) year term; the exception is the Town Supervisor, who serves for only two (2) years. The terms for the other four (4) members are staggered, so two (2) members are elected every two (2) years. The Town Board acts as both the executive and legislative branch of the town government. The town currently has about 100 employees, including seasonal people.

2.1. Population

In 2023, the Town of Skaneateles had a population of 7,058, a 1.9% decrease from the estimated 2018 population of 7,198. **Table 1** summarizes population distribution between 2010 and 2023, and the percentage of the 2023 population that is under five (5) years old, over 65 years old, and living below the poverty level.



Table 1. Population Trends

Population				Underserved Population		
2010 ¹	2018 ²	2023 ³	Population Change (2018 – 2023)	Youth ³ (Under 5 years old)	Elderly ³ (Over 65 years old)	Below Poverty Level ³
7,209	7,198	7,058	-1.9%	5.9%	28.0%	7.2%

2.2. History and Cultural Resources

The first settler, Abraham Cuddeback, came to survey the Central New York Military Tract of Skaneateles under Moses Dewitt. At first, a part of the township of Marcellus, the Town of Skaneateles was separated and established independently on February 26, 1830, and the Village, at the head of the lake, was incorporated on April 19, 1833. Early Turnpikes facilitated development, and the Town was noted for participation in reform movements prior to the Civil War. Some Skaneateles men volunteered for the ill-fated campaign (Patriot War, 1848) to liberate Canada and were imprisoned by the British in Tasmania. Furthermore, Quaker congregations participated in abolition activities. Underground Railroad sites have been documented in the Town of Skaneateles. Although the larger City of Syracuse nearby was known nationally as a center of abolition and Underground Railroad activity, Beauchamp, an early historian, said that Skaneateles had "eclipsed Syracuse as an anti-slavery town."

3. GROWTH/DEVELOPMENT TRENDS

Understanding development trends can help evaluate whether the jurisdiction’s vulnerability has increased, decreased, or remained the same. **Table 2** summarizes the total housing units built in the Town of Skaneateles between 2019 and 2023.⁴

Table 2. Housing Units Built (2019 – 2023)

Type	2019	2020	2021	2022	2023
Single-Family Units	9	15	8	8	10
Multi-Family Units	0	4	3	4	4
2-Family Units	0	0	0	0	0
3-Family Units	0	0	0	0	0
Apartment Units	0	4	3	4	4
Total Units	9	19	11	12	14

The Onondaga County Housing Needs Assessment, a component of the County’s Comprehensive Plan, explores the County’s housing market and its challenges in greater depth and argues that one of the County’s greatest housing needs is an improved approach to land use planning. In the Assessment, it is stated that there are similarities and affinities between certain groups of municipalities. Therefore, the County was sub-divided into seven (7) sub-regions, each of which covers multiple municipalities. The municipalities within each sub-region, share sufficient geographic and market characteristics to be treated as a single place for purposes of further understanding the county housing market.

¹ United States Census Bureau. (2023). QuickFacts: Town of Skaneateles. Retrieved from <https://www.census.gov/quickfacts/fact/table/skaneatelestownonondagacountynewyork>.

² United States Census Bureau. (2018). DP05: ACS Demographic and Housing Estimates (2018: 5-Year Estimates Data Profiles). Retrieved from <https://data.census.gov/table/ACSDP5Y2018.DP05?g=060XX00US3606767521>.

³ United States Census Bureau. (2023). QuickFacts: Town of Skaneateles. Retrieved from <https://www.census.gov/quickfacts/fact/table/skaneatelestownonondagacountynewyork>.

⁴ Data provided by the Onondaga County Department of Planning based on Real Property Data (2024).



The Town of Skaneateles is in the Lake Region sub-region. This sub-region has a larger proportion of married couples – under 65 years old (37%) and over 65 years old (20%). Total household growth between 2000 and 2020 was 4.3% (the average of all the County towns/villages was 12.0%). The Lake Region is the least dependent on households moving from within Onondaga County. This sub-region offers something rare and valuable, which is an idyllic setting on one of the most sought after lakes in Upstate New York, and perhaps in the northeast United States. The Lake Region’s rarity, in combination with a growing market, could plausibly elevate home values above and beyond their mid-2020s levels. Given the Lake Region’s role within the County market, and its demographics, it is reasonable to expect that Skaneateles, and the Village in particular, may be a location for developing senior-focused rental housing at some level. Management of rural, large lot residential development would likely continue to be an issue.

Table 3 summarizes major recent residential/commercial development (in the past five (5) years), and any known or anticipated significant residential/commercial development and significant infrastructure development, as of December 2024, that is likely to occur within hazard-prone areas in the next five (5) years.

Table 3. Growth and Development

Property or Development Name	Location	Type <i>(e.g., residential, commercial)</i>	# of Units/ Structures	Known Hazard Zone(s)	Status of Development
Recent Development in the Past Five (5) Years (2019 – 2024)					
The Town has not experienced significant development in hazard-prone areas over the past five (5) years.					
Known or Anticipated Development in the Next Five (5) Years (2024 – 2029)					
The Town does not anticipate significant development in hazard-prone areas over the next five (5) years.					

3.1. Changes in Priority

The overall hazard mitigation priorities have not significantly changed for the Town of Skaneateles since the last Plan update. However, mitigation actions from the previous Plan were updated, and a more concerted effort to achieve equitable outcomes for all communities, including underserved communities and socially vulnerable populations, has been implemented.

4. CAPABILITY ASSESSMENT

Federal regulations require hazard mitigation plans to identify goals for reducing long-term vulnerabilities to the identified hazards in the planning area (Section 201.6(c)(3)(i)). A critical step in developing specific hazard mitigation actions and projects is assessing existing authorities, policies, programs, and resources and capabilities, and using or modifying local tools to reduce losses and vulnerability from profiled hazards.

A capability assessment was conducted for the Town of Skaneateles’ authorities, policies, programs, and resources. Goals and mitigation actions were developed using input from this assessment. Information regarding the Town’s implementation of and continued participation in the National Flood Insurance Program (NFIP) can be found in Section 5 of this Annex.

The Local Planning Team assessed the Town’s capabilities that can contribute to the reduction of long-term vulnerabilities to hazards. The capabilities include the following categories:

- Planning and Regulatory Capabilities
- Administrative and Technical Capabilities



- Fiscal Capabilities
- Education and Outreach Capabilities

Additionally, ways to expand and improve these existing policies and programs to integrate hazard mitigation into the Town's day-to-day activities were considered.

4.1. Planning and Regulatory Capabilities

Table 4 includes local ordinances, policies, and laws to manage growth and development (e.g., land use plans, capital improvement plans, transportation plans, emergency preparedness and response plans, building codes, and zoning ordinances).

Table 4. Planning and Regulatory Tools

Capability Category	Yes/No	Authority <i>(local, county, state, federal)</i>	Responsible Department/ Agency	Code Citation and Comments <i>(e.g., Code Chapter, name of plan, explanation of authority, etc.)</i>
Planning Capability				
Comprehensive Plan	Yes	Local	Planning & Development Department	Adopted in September 2020
Capital Improvements Plan	Yes	Local	Town Board	
Floodplain Management / Basin Plan	No	N/A	N/A	N/A
Stormwater Management Plan	No	N/A	N/A	N/A
Open Space Plan	Yes	Local	Planning & Development Department	Updated in October 2016
Stream Corridor Management Plan	No	N/A	N/A	N/A
Watershed Management or Protection Plan	Yes	Local	City of Syracuse, Skaneateles Town Board	Skaneateles Watershed Municipal Partnership/ Skaneateles Lake Watershed Education Program
Economic Development Plan	No	N/A	N/A	N/A
Comprehensive Emergency Management Plan	No	N/A	N/A	N/A
Emergency Operation Plan	No	N/A	N/A	N/A
Evacuation Plan	No	N/A	N/A	N/A
Post-Disaster Recovery Plan	Yes	Local	Town Board	
Transportation Plan	No	N/A	N/A	N/A



Capability Category	Yes/No	Authority (local, county, state, federal)	Responsible Department/ Agency	Code Citation and Comments (e.g., Code Chapter, name of plan, explanation of authority, etc.)
Strategic Recovery Planning Report	No	N/A	N/A	N/A
Climate Adaptation Plan	Yes	Local	Town Board	Town of Skaneateles Climate Action Plan (2015)
Resilience Plan	No	N/A	N/A	N/A
Regulatory Capability				
Building Code	Yes	State, Local	Building & Codes Department	Chapter 16 of the New York State Building Code Chapter 42 of the Town Code
Zoning Ordinance	Yes	Local	Building & Codes Department	Chapter 148 of the Town Code
Subdivision Ordinance	Yes	Local	Building & Codes Department	Chapter 131 of the Town Code
NFIP Flood Damage Prevention Ordinance	Yes	Local	Building & Codes Department	Chapter 72 of the Town Code
NFIP: Cumulative Substantial Damages	No	N/A	N/A	N/A
NFIP: Freeboard	Yes	State, Local	Building & Codes Department	Chapter 16 of the New York State Building Code State mandated two (2) feet above the BFE for all construction, both residential and non-residential.
Growth Management Ordinances	Yes	Local	Planning & Development	Chapter 148 of the Town Code
Site Plan Review Requirements	Yes	Local	Planning Board	Chapter 148 of the Town Code
Stormwater Management Ordinance	Yes	Local	Building & Codes Department	Chapter 148 of the Town Code
Municipal Separate Storm Sewer System (MS4)	No	N/A	N/A	N/A
Natural Hazard Ordinance	No	N/A	N/A	N/A
Post-Disaster Recovery Ordinance	Yes	Local	Town Board	
Real Estate Disclosure Requirement	Yes	State	New York State Department of State, Real Estate Agent	New York Code – Article 14 §460-467 (Property Condition Disclosure Act)



Capability Category	Yes/No	Authority (local, county, state, federal)	Responsible Department/ Agency	Code Citation and Comments (e.g., Code Chapter, name of plan, explanation of authority, etc.)
Other (Special Purpose Ordinances [i.e., sensitive areas, steep slope])	Yes	Local	Planning & Development Department	Slopes: Chapter 148 of the Town Code

4.2. Administrative and Technical Capabilities

The administrative and technical capabilities listed in **Table 5** include community (i.e., public and private) staff, their skills, and tools that can be used for mitigation planning and implementation. This capability includes engineers, planners, emergency managers, Geographic Information System (GIS) analysts, building inspectors, grant writers, and floodplain managers. Small communities may rely on other government entities, such as counties or special districts, for resources.

Table 5. Administrative and Technical Capabilities

Capability	Yes/No	Position/Department/Agency
Administrative Capability		
Planning Board	Yes	Planning Board
Mitigation Planning Committee	No	N/A
Environmental Board/Commission	No	N/A
Open Space Board/Committee	Yes	Committee reports to the Town Board
Economic Development Commission/Committee	No	N/A
Maintenance programs to reduce risk	Yes	Highway Superintendent, Highway Department
Mutual aid agreements	Yes	Code Enforcement Officers with the Town of Marcellus and Town of Niles (Cayuga County)
Technical/Staffing Capability		
Planner(s) or engineer(s) with knowledge of land development and land management practices	Yes	Consultant
Engineer(s) or professional(s) trained in construction practices related to buildings and/or infrastructure	Yes	Consultant
Planners or engineers with an understanding of natural hazards	Yes	Consultant
NFIP Floodplain Administrator	Yes	Code Enforcement Officer, Building & Codes Department
Surveyor(s)	Yes	Consultant
Personnel skilled or trained in GIS applications	Yes	Highway Department
Scientist familiar with natural hazards	No	N/A
Warning systems/services	Yes	Onondaga County Emergency Communications (911)
Emergency Manager	Yes	Town Supervisor, Town Board
Grant writer(s)	Yes	Consultant



Capability	Yes/No	Position/Department/Agency
Staff with expertise or training in benefit/cost analysis	Yes	Town Budget Officer
Professionals trained in conducting damage assessments	No	N/A

4.3. Fiscal Capabilities

Table 6 lists fiscal capabilities available to the Town that may be used to implement mitigation activities to reduce risk and enhance resiliency. This capability includes available funding sources from local budgets, state and federal grants, potential cost-sharing arrangements with private entities, existing insurance policies, and the ability to generate additional revenue through fees and bonds related to mitigation.

Table 6. Fiscal Capabilities

Financial Resources	Accessible or Eligible to Use
Community Development Block Grants (CDBG, CDBG-DR)	Yes
Federal Hazard Mitigation Assistance Program (<i>i.e.</i> , Hazard Mitigation Grant Program (HMGP), HMGP Post Fire, Flood Mitigation Assistance (FMA) Program)	Yes
Capital Improvements Project Funding	Yes
Authority to Levy Taxes for specific purposes	Yes
User fees for water, sewer, gas, or electric service	Yes
Impact fees for homebuyers or developers of new development/homes	Yes
Stormwater Utility Fee	Yes
Incur debt through general obligation bonds	Yes
Incur debt through special tax bonds	Yes
Incur debt through private activity bonds	Yes
Withhold public expenditures in hazard-prone areas	Yes
Other federal or state funding programs	Yes
Open Space Acquisition funding programs	Yes

4.4. Education and Outreach Capabilities

Table 7 lists the Town’s education and public outreach capabilities that can be used to inform residents about potential hazards, educate on mitigation strategies, and encourage proactive actions to reduce the community’s impacts to disasters. These capabilities include fire safety programs, hazard awareness campaigns, public information, and communications offices.

Table 7. Education and Outreach Resources

Resource	Yes/No	Position/Department/Agency
Public Information Officer	Yes	Clerk’s Office
Personnel skilled or trained in website development	Yes	Clerk’s Office



Resource	Yes/No	Position/Department/Agency
Hazard mitigation information available on the jurisdiction’s website	No	N/A
Utilize social media for hazard mitigation education	Yes	Facebook
Citizen boards or commissions that address issues related to hazard mitigation	No	N/A
Other programs already in place that could be used to communicate hazard-related information	Yes	Social Media
An established warning system for hazard events	Yes	Onondaga County Emergency Communications (911)

4.5. Community Classifications

The community classification relates to the community’s ability to provide effective services to reduce its vulnerability to the identified hazards. These classifications can be viewed as a gauge of the community’s capabilities across all phases of emergency management (i.e., preparedness, response, recovery, and mitigation) and are used as underwriting parameters to determine the costs of various forms of insurance. **Table 8** summarizes classifications for community programs available to the Town of Skaneateles.

Table 8. Community Classifications

Program	Yes/No	Classification (if applicable)	Date Classified (if applicable)
Community Rating System (CRS)	No	N/A	N/A
Building Code Effectiveness Grading Schedule (BCEGS)	Yes	Class 4	April 2022
Public Protection (ISO Fire Protection Classes 1 to 10)	Yes	Class 1	April 2022
New York State Department of Environmental Conservation Climate Smart Community	Yes	N/A	N/A
Storm Ready Certification	No	N/A	N/A
Firewise Communities classification	No	N/A	N/A
Natural disaster/safety programs in/for schools	No	N/A	N/A
Organizations with mitigation focus (advocacy group, non-government)	Yes	Yes	N/A
Public private partnership initiatives addressing disaster-related issues	No	N/A	N/A

4.6. Self-Assessment of Capability

Table 9 provides an approximate measure of the Town of Skaneateles’ capability to work in a hazard mitigation capacity and/or effectively implement hazard mitigation strategies to reduce hazard vulnerabilities.



Table 9. Self-Assessment Capability for the Municipality

Capability Area	Degree of Hazard Mitigation Capability		
	<i>Limited</i> <i>(If limited, what are your obstacles?)</i>	<i>Moderate</i>	<i>High</i>
Planning and Regulatory Capabilities			X
Administrative and Technical Capabilities		X	
Fiscal Capabilities		X	
Education and Outreach Capabilities		X	
Community Political Capabilities		X	
Community Resiliency Capabilities		X	
Capability to integrate mitigation into municipal processes and activities		X	

4.7. Needs to Expand/Improve Capabilities

Based on the capability self-assessment in Section 4.6, the Town of Skaneateles identified existing authorities, policies, programs, funding, and/or resources that need to be expanded and/or improved in order to support the implementation of the hazard mitigation initiatives identified in this Plan (e.g., mitigation actions).

- To increase the Town’s capability to implement hazard mitigation, apply for hazard mitigation grants, and fund the local match for hazard mitigation grants, the Town needs to expand its grant writing capabilities by potentially hiring more grant writers.
- Town codes and ordinances (e.g., building, zoning, protecting steep slopes, wetlands) should be reviewed based on developing trends in identified hazards and mitigation measures that can make them more effective at preventing losses.

5. NATIONAL FLOOD INSURANCE PROGRAM

The Town of Skaneateles is a member of the National Flood Insurance Program (NFIP), but has chosen not to participate in the NFIP Community Rating System (CRS) Program. The Town is in good standing with the NFIP through adoption and enforcement of floodplain management requirements (e.g., regulating all new and substantially improved construction in Special Hazard Flood Areas), floodplain identification and mapping, and flood insurance outreach to the community. The Town’s NFIP participation information is listed in **Table 10**.

Table 10. NFIP Participation Information

CID	NFIP Participation Date	Current Effective FIRM Date	CRS Entry Date	CRS Current Effective Date	CRS Rating
360592	11/8/1974	11/4/2016	N/A	N/A	N/A

5.1. NFIP Floodplain Administrator

All NFIP participating jurisdictions have a designated Floodplain Administrator who is charged with enforcing floodplain regulations, routinely monitoring the floodplains, and providing community assistance, such as encouraging owners to maintain flood insurance. The Town of Skaneateles Floodplain Administrator information is listed in **Table 11**.



Table 11. Floodplain Administrator

Name	Title	Department	Phone Number
Robert Herrmann Jr.	Code Enforcement Officer	Building & Codes Department	(315) 685-0833

5.2. Repetitive Loss and Severe Repetitive Loss Property

FEMA defines a Repetitive Loss property as an NFIP-insured property meeting at least one (1) of the following paid loss criteria since 1978, regardless of any changes in ownership:

- Four (4) or more separate claims payments greater than \$5,000 each (including building and contents payment).
- Two (2) or more separate flood insurance claims payments (building payments only), where the total of the payments is greater than the property’s current value.

Additionally, to receive a designation, at least two (2) of the claim payments must occur within 10 years of one another.⁵

A Severe Repetitive Loss property is defined by FEMA as any NFIP-insured single-family or multi-family residential building meeting at least one (1) of the following paid loss criteria since 1978 or from a building constructed after 1978, regardless of any changes in ownership:⁶

- That has incurred flood-related damage for which four (4) or more separate claims payments have been made, with the amount of each claim (including building and contents payments) exceeding \$5,000, and with the cumulative amount of such claims payments exceeding \$20,000.
- For which at least two (2) separate claims payments (building payments only) have been made under such coverage, with the cumulative amount of such claims exceeding the market value of the building.

Table 12 summarizes FEMA Repetitive Loss and Severe Repetitive Loss properties within the Town of Skaneateles.

⁵ Federal Emergency Management Agency, National Flood Insurance Program. (2023). A Policyholder’s Guide to Severe Repetitive Loss. Retrieved from https://agents.floodsmart.gov/sites/default/files/fema_nfip-policyholders-guide-severe-repetitive-loss_brochure_07-2023.pdf.

⁶ Federal Emergency Management Agency, National Flood Insurance Program. (2021). National Flood Insurance Program: Flood Insurance Manual. Retrieved from https://www.fema.gov/sites/default/files/documents/fema_nfip-all-flood-insurance-manual-apr-2021.pdf.



Table 12. Repetitive Loss and Severe Repetitive Loss Properties

Repetitive Loss Properties		Severe Repetitive Loss Properties	
Total	Occupancy	Total	Occupancy
0	--	0	--
<p>Occupancy Type: Single Family = Single family residence • Two (2)-Four (4) Unit Residential Building = Two (2)-four (4) unit residential building • More Than Four (4) Units Residential Building = Residential building with more than four (4) units • Non-Residential Building = Non-residential building • Non-Residential Business = Non-residential business • Single Family Residential Building = Single-family residential building with the exception of a mobile home or a single residential unit within a multi-unit building • Residential (2, 3, or 4 units) Non-Condo Building = Residential non-condo building with two (2), three (3), or four (4) units seeking insurance on all units • Residential (5 or more units) Non-Condo Building = Residential non-condo building with 5 or more units seeking insurance on all units • Residential Mobile/Manufactured Home = Residential mobile/manufactured home • Residential Condo Association = Residential condo association seeking coverage on a building with one (1) or more units • Single Residential Unit = Single residential unit within a multi-unit building • Non-Residential Mobile/manufactured Home = Non-residential mobile/manufactured home • Non-Residential Building = Non-residential building • Non-Residential Unit = Non-residential unit within a multi-unit building</p>			

Table 13 summarizes the NFIP active policies and coverage in force data for the Town of Skaneateles.

Table 13. NFIP Policies

NFIP Policies	Insurance in Force	Total Claims Paid	Sum of Claims Paid
13	\$8,543	7	\$109,334

5.3. Participation Activities

The Town of Skaneateles NFIP participation over the last five (5) years includes the following:

- Provides the following services – permit review, GIS, inspections, and engineering capability.
- Enforces local floodplain regulations and monitors compliance.
- Floodplain management regulations meet or exceed FEMA or State minimum requirements.

5.3.1. Regulatory

Flood Damage Prevention Ordinance

The Town of Skaneateles’ Flood Damage Prevention Chapter (*Chapter 72 of the Town Code*) was adopted to promote the public health, safety, and general welfare, and to minimize public and private losses due to flood conditions in specific areas by provisions designed to:

- Regulate uses which are dangerous to health, safety and property due to water or erosion hazards, or which result in damaging increases in erosion or in flood heights or velocities.
- Require that uses vulnerable to floods, including facilities which serve such uses, be protected against flood damage at the time of initial construction.
- Control the alteration of natural floodplains, stream channels, and natural protective barriers which are involved in the accommodation of floodwaters.
- Control filling, grading, dredging and other development which may increase erosion or flood damages.
- Regulate the construction of flood barriers which will unnaturally divert floodwaters or which may increase flood hazards to other lands.
- Qualify for and maintain participation in the NFIP.



The objectives of this Chapter are to:

- Protect human life and health.
- Minimize expenditure of public money for costly flood control projects.
- Minimize the need for rescue and relief efforts associated with flooding and generally undertaken at the expense of the general public.
- Minimize prolonged business interruptions.
- Minimize damage to public facilities and utilities, such as water and gas mains, electric, telephone, and sewer lines, streets and bridges located in areas of special flood hazard.
- Help maintain a stable tax base by providing for the sound use and development of areas of special flood hazard so as to minimize future flood blight areas.
- Provide that developers are notified that property is in an area of special flood hazard.
- Ensure that those who occupy the areas of special flood hazard assume responsibility for their actions.

Substantial Damage

Substantial damage means damage of any origin sustained by a structure whereby the cost of restoring the structure to its before damaged condition would equal or exceed 50% of the market value of the structure before the damage occurred. (Chapter 72 of the Town Code)

Substantial Improvement

Substantial improvement means any reconstruction, rehabilitation, addition, or other improvement of a structure, the cost of which equals or exceeds 25% of the market value of the structure before the "start of construction" of the improvement. The term includes structures which have incurred "substantial damage," regardless of the actual repair work performed. The term does not, however, include either:

- A. Any project for improvement of a structure to correct existing violations of state or local health, sanitary, or safety code specifications which have been identified by the local code enforcement official and which are the minimum necessary to assure safe living conditions; or
- B. Any alteration of an "historic structure," provided that the alteration will not preclude the structure's continued designation as an "historic structure." (Chapter 72 of the Town Code)

There are other local ordinances, plans, or programs (e.g., site plan review) that support floodplain management and meet the NFIP requirements.

Substantial Damage/Substantial Improvement Determination Process

The Town of Skaneateles' Substantial Damage/Substantial Improvement determination process ensures compliance with the NFIP and the local floodplain management ordinances (as outlined earlier in this section). To determine whether a structure has sustained Substantial Damage/Substantial Improvement after a flood event, a report or observation must be submitted to the municipality to initiate an investigation through the Building & Codes Department. The Code Enforcement Officer then investigates and provides necessary advice to interested parties on how to proceed, depending on who will be mitigating the problem.



6. HAZARD MITIGATION PLAN INTEGRATION

For a community to successfully reduce long-term risk, hazard mitigation must be integrated into day-to-day planning mechanisms and initiatives. Plan integration is the process by which communities critically assess the existing planning framework and align efforts with the goal of reducing long-term risks and building a more resilient community. It involves a two (2) way exchange of information and incorporation of ideas and concepts between hazard mitigation plans and other community plans. In particular, plan integration involves incorporating hazard mitigation principles and actions into other plans and integrating planning mechanisms into hazard mitigation plans. Plan integration involves community plans, policies, codes, and programs that guide development, roles, and responsibilities in implementing these capabilities. Additionally, plan integration is achieved through the involvement of key staff and community officials in collaborative hazard mitigation planning.

6.1. Existing Plan Integration

A hazard mitigation plan must explain how the jurisdiction incorporated the previous Plan update over the last five (5) years to demonstrate progress in local mitigation efforts. In the performance period since the adoption of the previous Hazard Mitigation Plan, the Town of Skaneateles has made progress on integrating components of the hazard mitigation strategy (e.g., goals, objectives, and actions) into planning initiatives and mechanisms. **Table 14** highlights the planning mechanisms/initiatives in which the previous Plan was integrated and the information integrated.

Table 14. Current Plan Integration

Planning Initiative	Current Integration Description
Ordinances	The Town has multiple local ordinances pertaining to the mitigation of hazards. These ordinances include the establishment of the Planning Board and the Zoning Board of Appeals, Fire Prevention Ordinance (Chapter 70 of the Town Code), Flood Damage Prevention Ordinance (Chapter 72 of the Town Code), Zoning Ordinance (Chapter 148 of the Town Code), and the Subdivision Regulations (Chapter 131 of the Town Code).
Retrofitting/Removal of Structures from Hazard-Prone Areas	The Town supports the retrofitting, purchase, or relocation of structures located in hazard-prone areas to protect structures from future damage, with repetitive loss and severe repetitive loss properties as priority. The Town works to identify facilities that are viable candidates for each strategy based on cost-effectiveness. The implementation of these hazard mitigation actions is based on available funding. <i>Refer to mitigation action TSK-1.</i>
Local Budget	The Town includes a line item for mitigation projects/activities in both the municipal and capital improvement budgets.
Public Outreach	The Town’s website provides information on safety and hazard mitigation, including local emergency response contact information, current information on flood risks, harmful algal blooms, and stormwater management, and links to related ordinances and plans.

6.2. Potential Future Integration

A hazard mitigation plan must explain how the jurisdiction intends to incorporate this Plan update into planning mechanisms over the next five (5) years. The capability assessment presented in Section 4 of this Annex identifies codes, plans, and programs that provide opportunities for integration. **Table 15** outlines planning mechanisms/initiatives that do not currently integrate the goals and recommendations of this Plan but provide opportunities to do so in the future.



Table 15. Potential Future Integration

Planning Initiative	Potential Integration Description
Comprehensive Plan	The Hazard Mitigation Plan should be incorporated into the next update of the Town’s Comprehensive Plan by aligning the hazard mitigation goals with the Comprehensive Plan’s vision, and the hazard risk assessment information from this Plan could be used to address vulnerabilities.
Ordinances	Hazard mitigation and resilience could be integrated into future updates of the zoning, building, subdivision, and stormwater management ordinances to inform appropriate use of property within the Town. Portions of this Hazard Mitigation Plan should be reviewed to consider any future improvements to the codes, if applicable.
Public Outreach	The Town could expand the information available on the Town’s website to include material on the hazards outlined in this Hazard Mitigation Plan, as well as information on climate change impacts to those hazards. Furthermore, the Town could develop community outreach programs. <i>Refer to mitigation action TSK-2.</i>

The Town’s Local Planning Team will identify all relevant planning initiatives scheduled for update in the next year and during the annual update process of the Hazard Mitigation Plan. Additionally, the Local Planning Team will identify opportunities to integrate key elements of the Hazard Mitigation Plan, specifically relevant strategies, into the planning initiatives. Mitigation actions were identified to promote plan integration in future revisions of this Plan.

7. SIGNIFICANT HAZARD PAST EVENTS

A complete risk assessment, including past incidents, for each identified hazard of concern, can be found in **Volume 1** of this Plan. A summary of past events is provided under each hazard profile and includes a chronology of events that have affected the County and its municipalities.

8. HAZARD VULNERABILITY AND IMPACT ASSESSMENT

Exposure and vulnerability to certain hazards affect the entire County, and others are geographically defined. Although the entire County may be vulnerable to these hazards, their impacts may vary based on existing community conditions (e.g., underserved populations or those with access and functional needs may be more susceptible under certain conditions).

Table 16 outlines the *unique vulnerabilities and impacts* for the Town of Skaneateles and addresses only the hazards relevant to the jurisdiction. A complete risk assessment for each identified hazard of concern is in **Volume 1** of this Plan. Hazard mapping can be found in **Appendix A** of this Annex.

Table 16. Hazard Vulnerability and Impact Assessment

Hazard	Vulnerabilities and Impacts
Drought	The Local Planning Team determined that the Town does not have unique vulnerabilities and impacts to drought; rather, the jurisdiction’s vulnerability and impacts are consistent with those experienced throughout the County.
Earthquake	The Local Planning Team determined that the Town does not have unique vulnerabilities and impacts to earthquake events; rather, the jurisdiction’s vulnerability and impacts are consistent with those experienced throughout the County.
Heat Wave/Extreme Heat	The Local Planning Team determined that the Town does not have unique vulnerabilities and impacts to heat wave/extreme heat events; rather, the jurisdiction’s vulnerability and impacts are consistent with those experienced throughout the County.



Hazard	Vulnerabilities and Impacts
Flood <i>(riverine, flash/urban, ice jam, dam and levee failure)</i>	The Local Planning Team determined that the Town does not have unique vulnerabilities and impacts to flood events; rather, the jurisdiction’s vulnerability and impacts are consistent with those experienced throughout the County.
Geological Hazards <i>(landslides, land subsidence, mudboils)</i>	The Local Planning Team determined that the Town does not have unique vulnerabilities and impacts to geological hazards; rather, the jurisdiction’s vulnerability and impacts are consistent with those experienced throughout the County.
Harmful Algal Bloom	Skaneateles Lake is the Town's primary water source; therefore, a harmful algal bloom event would impact the Town’s ability to supply water to residents within the Town and to surrounding towns and villages.
Invasive Species and Infestation <i>(Emerald Ash Borer, Hemlock Woolly Adelgid, True Armyworm, Common Reed (Phragmites), Eurasian Watermilfoil, Water Chestnut, Tick-Borne Diseases, Mosquito-Borne Diseases)</i>	The Local Planning Team determined that the Town does not have unique vulnerabilities and impacts to invasive species and infestation; rather, the jurisdiction’s vulnerability and impacts are consistent with those experienced throughout the County.
Severe Weather <i>(severe thunderstorms – hail, strong winds/damaging winds, tornadoes, hurricane/tropical storm)</i>	The Local Planning Team determined that the Town does not have unique vulnerabilities and impacts to severe weather; rather, the jurisdiction’s vulnerability and impacts are consistent with those experienced throughout the County.
Winter Weather <i>(blizzards, heavy snow, ice storms, cold wave/extreme cold, nor’easter)</i>	The Local Planning Team determined that the Town does not have unique vulnerabilities and impacts to winter weather; rather, the jurisdiction’s vulnerability and impacts are consistent with those experienced throughout the County.
Wildfire <i>(wildfire smoke)</i>	The Local Planning Team determined that the Town does not have unique vulnerabilities and impacts to wildfire; rather, the jurisdiction’s vulnerability and impacts are consistent with those experienced throughout the County.

The Town evaluated whether vulnerability in hazard-prone areas had increased, decreased, or remained the same for each natural hazard identified in this Hazard Mitigation Plan. Climate change, changes in population, infrastructure expansion, and economic shifts that can affect vulnerability were considered. For example, if planned development is in an identified hazard area or is not built to the updated building codes, it may increase the community’s vulnerability to future hazards and disasters. On the other hand, if development occurred with mitigation practices in place, the vulnerability may have remained the same or decreased. Additionally, shifting demographics (e.g., underserved population) were taken into consideration.

Table 17 outlines whether climate change has increased or decreased the Town’s vulnerability (i.e., exposure) and impact to each natural hazard over the past five (5) years, and the effect of climate change on the future probability of occurrence and impacts from each natural hazard.

Table 17. Climate Change Current and Future Vulnerability and Impact

Hazard	Vulnerability and Impact
<i>Current Vulnerability and Impact</i>	
Drought	Remained the Same
Earthquake	Remained the Same
Heat Wave/Extreme Heat	Remained the Same
Flood <i>(riverine, flash/urban, ice jam, dam and levee failure)</i>	Remained the Same
Geological Hazards <i>(landslides, land subsidence, mudboils)</i>	Remained the Same
Harmful Algal Bloom	Increased



Hazard	Vulnerability and Impact
Invasive Species and Infestation (<i>Emerald Ash Borer, Hemlock Woolly Adelgid, True Armyworm, Common Reed (Phragmites), Eurasian Watermilfoil, Water Chestnut, Tick-Borne Diseases, Mosquito-Borne Diseases</i>)	Remained the Same
Severe Weather (<i>severe thunderstorms – hail, strong winds/damaging winds, tornadoes, hurricane/tropical storm</i>)	Remained the Same
Winter Weather (<i>blizzards, heavy snow, ice storms, cold wave/extreme cold, nor'easter</i>)	Remained the Same
Wildfire (<i>wildfire smoke</i>)	Remained the Same
<i>Future Vulnerability and Impact</i>	
Drought	No Change Anticipated
Earthquake	No Change Anticipated
Heat Wave/Extreme Heat	No Change Anticipated
Flood (<i>riverine, flash/urban, ice jam, dam and levee failure</i>)	No Change Anticipated
Geological Hazards (<i>landslides, land subsidence, mudboils</i>)	No Change Anticipated
Harmful Algal Bloom	Increase
Invasive Species and Infestation (<i>Emerald Ash Borer, Hemlock Woolly Adelgid, True Armyworm, Common Reed (Phragmites), Eurasian Watermilfoil, Water Chestnut, Tick-Borne Diseases, Mosquito-Borne Diseases</i>)	No Change Anticipated
Severe Weather (<i>severe thunderstorms – hail, strong winds/damaging winds, tornadoes, hurricane/tropical storm</i>)	No Change Anticipated
Winter Weather (<i>blizzards, heavy snow, ice storms, cold wave/extreme cold, nor'easter</i>)	No Change Anticipated
Wildfire (<i>wildfire smoke</i>)	No Change Anticipated

Table 18 outlines whether changes in population within the Town over the past five (5) years have increased or decreased the vulnerability (i.e., exposure) and impact to these natural hazards, and the anticipated effects changes in population may have on the future probability of occurrence and impacts from these natural hazards.

Table 18. Changes in Population Current and Future Vulnerability and Impact

Hazard	Vulnerability and Impact
<i>Current Vulnerability and Impact</i>	
Drought	Remained the Same
Earthquake	Remained the Same
Heat Wave/Extreme Heat	Remained the Same
Flood (<i>riverine, flash/urban, ice jam, dam and levee failure</i>)	Remained the Same
Geological Hazards (<i>landslides, land subsidence, mudboils</i>)	Remained the Same
Harmful Algal Bloom	Increased
Invasive Species and Infestation (<i>Emerald Ash Borer, Hemlock Woolly Adelgid, True Armyworm, Common Reed (Phragmites), Eurasian Watermilfoil, Water Chestnut, Tick-Borne Diseases, Mosquito-Borne Diseases</i>)	Remained the Same
Severe Weather (<i>severe thunderstorms – hail, strong winds/damaging winds, tornadoes, hurricane/tropical storm</i>)	Remained the Same
Winter Weather (<i>blizzards, heavy snow, ice storms, cold wave/extreme cold, nor'easter</i>)	Remained the Same
Wildfire (<i>wildfire smoke</i>)	Remained the Same



Hazard	Vulnerability and Impact
Future Vulnerability and Impact	
Drought	No Change Anticipated
Earthquake	No Change Anticipated
Heat Wave/Extreme Heat	No Change Anticipated
Flood (<i>riverine, flash/urban, ice jam, dam and levee failure</i>)	No Change Anticipated
Geological Hazards (<i>landslides, land subsidence, mudboils</i>)	No Change Anticipated
Harmful Algal Bloom	Increase
Invasive Species and Infestation (<i>Emerald Ash Borer, Hemlock Woolly Adelgid, True Armyworm, Common Reed (Phragmites), Eurasian Watermilfoil, Water Chestnut, Tick-Borne Diseases, Mosquito-Borne Diseases</i>)	No Change Anticipated
Severe Weather (<i>severe thunderstorms – hail, strong winds/damaging winds, tornadoes, hurricane/tropical storm</i>)	No Change Anticipated
Winter Weather (<i>blizzards, heavy snow, ice storms, cold wave/extreme cold, nor'easter</i>)	No Change Anticipated
Wildfire (<i>wildfire smoke</i>)	No Change Anticipated

Table 19 outlines whether development over the past five (5) years has increased or decreased the Town’s vulnerability (i.e., exposure) and impact to these natural hazards, and the anticipated effects changes in development may have on the future probability of occurrence and impacts from these natural hazards.

Table 19. Changes in Development Current and Future Vulnerability and Impact

Hazard	Vulnerability and Impact
Current Vulnerability and Impact	
Drought	Remained the Same
Earthquake	Remained the Same
Heat Wave/Extreme Heat	Remained the Same
Flood (<i>riverine, flash/urban, ice jam, dam and levee failure</i>)	Remained the Same
Geological Hazards (<i>landslides, land subsidence, mudboils</i>)	Remained the same
Harmful Algal Bloom	Increased
Invasive Species and Infestation (<i>Emerald Ash Borer, Hemlock Woolly Adelgid, True Armyworm, Common Reed (Phragmites), Eurasian Watermilfoil, Water Chestnut, Tick-Borne Diseases, Mosquito-Borne Diseases</i>)	Remained the Same
Severe Weather (<i>severe thunderstorms – hail, strong winds/damaging winds, tornadoes, hurricane/tropical storm</i>)	Remained the Same
Winter Weather (<i>blizzards, heavy snow, ice storms, cold wave/extreme cold, nor'easter</i>)	Remained the Same
Wildfire (<i>wildfire smoke</i>)	Remained the Same
Future Vulnerability and Impact	
Drought	No Change Anticipated
Earthquake	No Change Anticipated
Heat Wave/Extreme Heat	No Change Anticipated
Flood (<i>riverine, flash/urban, ice jam, dam and levee failure</i>)	No Change Anticipated
Geological Hazards (<i>landslides, land subsidence, mudboils</i>)	No Change Anticipated
Harmful Algal Bloom	Increase



Hazard	Vulnerability and Impact
Invasive Species and Infestation (<i>Emerald Ash Borer, Hemlock Woolly Adelgid, True Armyworm, Common Reed (Phragmites), Eurasian Watermilfoil, Water Chestnut, Tick-Borne Diseases, Mosquito-Borne Diseases</i>)	No Change Anticipated
Severe Weather (<i>severe thunderstorms – hail, strong winds/damaging winds, tornadoes, hurricane/tropical storm</i>)	No Change Anticipated
Winter Weather (<i>blizzards, heavy snow, ice storms, cold wave/extreme cold, nor'easter</i>)	No Change Anticipated
Wildfire (<i>wildfire smoke</i>)	No Change Anticipated

8.1. Future Major Assets

Community assets should include anything that is important to a community's character and function. Assets include people (i.e., underserved population); structures (i.e., new and existing buildings); community lifelines and other critical facilities; natural, historic, and cultural resources; and the economy and other activities that have value to the community. Although all assets may be affected by the hazards identified in this Hazard Mitigation Plan, the jurisdiction has identified future major assets that may be more vulnerable and impacted by these hazards.

- The Town anticipates additional construction of large residences, resulting in an increase in population, which may increase the exposure and vulnerability of people, including the elderly, and structures to any of the natural hazards identified in this Hazard Mitigation Plan. However, any future major assets within the Town may be most vulnerable to flooding and harmful algal blooms in Skaneateles Lake.
- Any new assets (e.g., new construction in hazard-prone areas) will be constructed to adhere to the latest building codes and standards, and mitigation to protect them from identified and anticipated hazards, especially those that are expected to increase due to climate change.

9. CRITICAL FACILITIES FLOOD RISK

New York State Department of Environmental Conservation (NYSDEC) Title 6, Chapter V, Subchapter A, Part 502 sets forth local floodplain management criteria for State projects located within flood hazard areas. The law states that no such projects related to critical facilities shall be undertaken in a Special Flood Hazard Area (SFHA) unless built in accordance with certain mitigation specifications, including being raised two (2) feet above the Base Flood Elevation (BFE).⁷ While all vulnerabilities should be assessed and documented, the State places a high priority on exposure to flooding.

Jurisdictions must identify all critical facilities, assess their vulnerabilities, and ensure they are protected against a 0.2% chance (500-year) flood event. Critical facilities that are located in an SFHA and/or have been previously flooded must be protected against a repeat of that flood or the 0.2% chance flood event, whichever provides the greater protection. The Plan must document that those critical facilities are protected to a 0.2% flood event, or the previous worst-case flood event. For those that do not meet this level of protection, the Plan must include a mitigation action to meet or go beyond this criterion or explain why it is not feasible to do so.⁸

Table 20 identifies critical facilities in the community located in the 100-year and 500-year floodplain.

⁷ New York State Department of Environmental Conservation. (n.d.). Chapter V – Resource Management Services. Retrieved from <https://dec.ny.gov/regulatory/regulations/chapter-v>.

⁸ New York State Division of Homeland Security and Emergency Services. (2022). 2022 New York State Hazard Mitigation Planning Standards. Retrieved from <https://www.dhses.ny.gov/system/files/documents/2023/11/2022-nys-mitigation-planning-standards-final.pdf>



Table 20. Potential Flood Losses to Critical Facilities

Name	Address	Type	Exposure		Potential Loss from 100-Year Flood Event		Facility Protected	Addressed by Proposed Action
			100-Year	500-Year	% Structure Damage	% Content Damage		
None identified								

10. HAZARD RISK RANKING

Table 21 presents the local hazard ranking for the Town of Skaneateles of all hazards of concern listed in **Volume 1** of this Plan. This ranking summarizes how hazards vary for this jurisdiction. As thoroughly described in **Volume 1** of this Plan, the ranking process involves an assessment of the likelihood of occurrence for each hazard, along with its potential impacts on people, property, and the economy. For further details on how the probability, extent, vulnerability, and impact factors in **Table 21** were calculated, please refer to Section 4.3 in **Volume 1** of this Plan.

It is important to note that the sub hazards for severe weather (i.e., strong winds/damaging winds, severe thunderstorms, tropical storm/hurricane, hail, and tornado), geological hazards (i.e., landslide, land subsidence, and mudboils), flood (i.e., riverine/creek flooding and ice jam, and urban/flash flooding), and winter weather (i.e., blizzards, lake effect snow, nor’easter, and ice storm, and cold wave/extreme cold) were individually ranked in the hazard risk ranking; however, severe weather, geological hazards, flood, and winter weather are each considered as the main hazard throughout this Annex and **Volume 1**.

Table 21. Town of Skaneateles Hazard Risk Ranking

Hazard Event	Probability Factor	Sum of Weighted Extent Factors	Sum of Weighted Vulnerability Factors	Sum of Weighted Impact Factors	Consequence Score	Total Risk Score <i>(Probability x Consequence)</i>
Winter Weather (Blizzards, Lake Effect Snow, Nor’easter, Ice Storm)	3	12	14	21	47	67
Severe Thunderstorm (<i>Severe Weather</i>)	3	12	16	14	42	61
Strong Winds/Damaging Winds (<i>Severe Weather</i>)	3	12	11	16	39	57
Harmful Algal Bloom	3	9	10	20	39	57
Flood (Urban/Flash Flood)	2	12	11	29	52	52
Cold Wave/Extreme Cold (<i>Winter Weather</i>)	2	12	14	21	47	48
Flood (Riverine/Creek, Ice Jam)	2	12	6	24	42	43
Heat Wave/Extreme Heat	2	9	11	19	39	41
Drought	2	12	12	13	37	39



Hazard Event	Probability Factor	Sum of Weighted Extent Factors	Sum of Weighted Vulnerability Factors	Sum of Weighted Impact Factors	Consequence Score	Total Risk Score <i>(Probability x Consequence)</i>
Tropical Storm/Hurricane <i>(Severe Weather)</i>	1	9	16	24	49	27
Dam and Levee Failure <i>(Flood)</i>	1	9	6	23	38	22
Hail <i>(Severe Weather)</i>	1	6	16	14	36	21
Earthquake	1	6	16	12	34	20
Tornado <i>(Severe Weather)</i>	1	6	6	22	34	20
Invasive Species and Infestation	1	6	6	15	27	16
Landslide <i>(Geological Hazards)</i>	1	6	6	13	25	15
Land Subsidence <i>(Geological Hazards)</i>	1	3	6	13	22	14
Mudboils <i>(Geological Hazards)</i>	1	3	6	12	21	13
Wildfire <i>(Wildfire Smoke)</i>	1	3	6	11	20	13

Consequence: Sum of all weighted factors.
Extent: Sum of the weighted Extent factors.
Vulnerability: Sum of the weighted Vulnerability factors.

Impact: Sum of the weighted Impact factors.
Total Risk Score* = Probability x Consequence
 * Normalized to 100

Total Risk Score Legend

Classification	Probability Factor	Extent	Vulnerability	Impact	Consequence Score	Total Risk Score
Low (L)	1	0 – 6	0 – 6	0 – 12	0 – 24	0 – 24
Medium (M)	2	7 – 12	7 – 12	13 – 26	25 – 50	25 – 54
High (H)	3	13 – 18	13 – 18	27 – 39	51 – 75	55 and above

The **Legend**—specifically the assignment of low, medium, and high—provides an additional means to qualitatively assess the probability factor, sum of weighted factors, and the total risk scores for each hazard. The **Consequence Score** represents the sum of the Extent, Vulnerability, and Impact Factors. The **Total Risk Score** is a measure of Probability and Consequence.



11. MITIGATION ACTIONS

This section includes the mitigation actions developed to address the risks and vulnerabilities to the hazards identified in this Plan. This Plan serves only to recommend mitigation measures based on the potential for risk reduction and available funding. Implementation of mitigation actions is dependent on risk reduction priorities, feasibility, and available funding. It is also dependent on the cooperation and support of the jurisdiction and/or department responsible for each action item. Additionally, all mitigation actions identified in the 2019 update or before were updated accordingly. Any new mitigation actions are listed as *New* (under Project Status).

The Town of Skaneateles agreed on **16** mitigation actions that apply to the jurisdiction’s properties for which it has jurisdictional responsibility and authority. One (1) mitigation action has been completed. A summary of the Town’s mitigation actions status is listed in **Table 22**.

Note: The mitigation actions outlined in this Plan are designed only to address those natural hazards that received a risk ranking of *medium* or *high* during the hazard risk assessment (**Table 21**). Hazards that ranked *low* (earthquakes, geological hazards, and wildfires) will not have specific mitigation actions detailed in this document.

Table 22. Town of Skaneateles Mitigation Action Summary

Status		Mitigation Action Total	
Continuous		9	
In Progress/Not Yet Completed		2	
No Progress/Not Yet Started		1	
New		4	
TOTAL		16	
Complete		1	
Discontinued		0	
Mitigation Actions per Hazard			
Drought	7	Harmful Algal Bloom	5
Earthquake	N/A	Invasive Species and Infestation <i>(Emerald Ash Borer, Hemlock Woolly Adelgid, True Armyworm, Common Reed (Phragmites), Eurasian Watermilfoil, Water Chestnut, Tick-Borne Diseases, Mosquito-Borne Diseases)</i>	6
Heat Wave/Extreme Heat	7	Severe Weather <i>(severe thunderstorms – hail, strong winds/damaging winds, tornadoes, hurricane/tropical storm, nor’easter)</i>	11
Flood <i>(riverine, flash/urban, ice jam, dam and levee failure)</i>	12	Winter Weather <i>(blizzards, heavy snow, ice storms, cold wave/extreme cold)</i>	7
Geological Hazards <i>(landslides, land subsidence, mudboils)</i>	N/A	Wildfire <i>(wildfire smoke)</i>	N/A

A detailed explanation of the Mitigation Strategy can be found in Section 5 of **Volume 1**.



Mitigation Action	Where appropriate, support retrofitting or relocation of structures in high-hazard areas, prioritizing structures that have experienced repetitive losses.				
Action Number	TSK-1	Goal(s) Addressed	2, 3, 6	Prioritization Score	13/15
Year Added to Plan	2013	Timeline (estimated)	Ongoing	Implementation Priority	High
Hazard(s) Mitigated	Drought, Heat Wave/Extreme Heat, Flood, Harmful Algal Bloom, Invasive Species and Infestation, Severe Weather, Winter Weather				
Project Status	Continuous	If <i>Discontinued</i> , provide reason.		N/A	
Benefits (Loss Avoided)	High				
Lead Agency / Organization	Town of Skaneateles Building & Codes Department	Supporting Agency / Organization (If applicable)		N/A	
Additional Participating Jurisdictions (If applicable)	N/A				
Estimated Cost	High	Potential Funding Source	General Fund (Staff Time), HMGP, FMA		
Critical Facility (Critical Facility located in 1% floodplain?)	No	Additional Details (optional)	Identify facilities that are viable candidates for retrofitting based on cost-effectiveness versus relocation. Where retrofitting is determined to be a viable option, consider implementation of that action based on available funding.		



Mitigation Action	<p>Conduct and facilitate community and public education and outreach for residents and businesses to include, but not limited to, the following, to promote and effect natural hazard risk reduction:</p> <ul style="list-style-type: none"> • Provide and maintain links to the Onondaga County Hazard Mitigation Plan website, and regularly post notices on the municipal homepage referencing the Onondaga County Hazard Mitigation Plan webpages. • Prepare and distribute informational letters to flood vulnerable property owners and neighborhood associations, explaining the availability of mitigation grant funding to mitigate their properties, and instructing them on how they can learn more and implement mitigation. • Use the Town’s e-mail notification systems and newsletters to educate the public on flood insurance better, the availability of mitigation grant funding, and personal natural hazard risk reduction measures. • Work with neighborhood associations, civic and business groups to disseminate information on flood insurance and the availability of mitigation grant funding. 				
	Action Number	TSK -2	Goal(s) Addressed	1, 2, 3, 4, 5, 6	Prioritization Score
Year Added to Plan	2013	Timeline <i>(estimated)</i>	Ongoing	Implementation Priority	High
Hazard(s) Mitigated		Drought, Heat Wave/Extreme Heat, Flood, Harmful Algal Bloom, Invasive Species and Infestation, Severe Weather, Winter Weather			
Project Status		Continuous	If <i>Discontinued</i> , provide reason.	N/A	
Benefits <i>(Loss Avoided)</i>		Low			
Lead Agency / Organization	Town of Skaneateles Building & Codes Department		Supporting Agency / Organization <i>(If applicable)</i>	Onondaga County Department of Planning	
Additional Participating Jurisdictions <i>(If applicable)</i>	N/A				
Estimated Cost	Low	Potential Funding Source	General Fund (Staff Time)		
Critical Facility <i>(Critical Facility located in 1% floodplain?)</i>	No	Additional Details <i>(optional)</i>			



Mitigation Action	Actively support and participate in the implementation, monitoring, maintenance, and updating of this Hazard Mitigation Plan, as outlined and defined in Volume 1.				
Action Number	TSK-3	Goal(s) Addressed	1, 2, 3, 4, 5, 6	Prioritization Score	15/15
Year Added to Plan	2013	Timeline (estimated)	Ongoing	Implementation Priority	High
Hazard(s) Mitigated	Drought, Heat Wave/Extreme Heat, Flood, Harmful Algal Bloom, Invasive Species and Infestation, Severe Weather, Winter Weather				
Project Status	Continuous	If <i>Discontinued</i> , provide reason.		N/A	
Benefits (Loss Avoided)	High				
Lead Agency / Organization	Town of Skaneateles Building & Codes Department	Supporting Agency / Organization (If applicable)		N/A	
Additional Participating Jurisdictions (If applicable)	N/A				
Estimated Cost	Low	Potential Funding Source	General Fund (Staff Time)		
Critical Facility (Critical Facility located in 1% floodplain?)	No	Additional Details (optional)			



Mitigation Action	<p>Continue to maintain good standing and compliance under the National Flood Insurance Program (NFIP) through implementation and enforcement of floodplain management requirements that, at a minimum, meet the NFIP requirements. These include:</p> <ul style="list-style-type: none"> • Enforce the flood damage prevention ordinance (e.g., regulating all new and substantially improved construction in Special Hazard Flood Areas). • Participate in floodplain identification and mapping updates. • Provide public assistance/outreach on floodplain requirements and impacts. 				
Action Number	TSK-4	Goal(s) Addressed	1, 2, 3, 4, 5, 6	Prioritization Score	15/15
Year Added to Plan	2013	Timeline <i>(estimated)</i>	Ongoing	Implementation Priority	High
Hazard(s) Mitigated		Flood, Severe Weather			
Project Status		Continuous	If <i>Discontinued</i> , provide reason.	N/A	
Benefits <i>(Loss Avoided)</i>		Medium			
Lead Agency / Organization		Town of Skaneateles Building & Codes Department (Floodplain Administrator)	Supporting Agency / Organization <i>(If applicable)</i>	N/A	
Additional Participating Jurisdictions <i>(If applicable)</i>		N/A			
Estimated Cost		Low	Potential Funding Source	General Fund (Staff Time)	
Critical Facility <i>(Critical Facility located in 1% floodplain?)</i>		No	Additional Details <i>(optional)</i>		



Mitigation Action	Develop, enhance, and implement the Town's existing emergency plans.				
Action Number	TSK-5	Goal(s) Addressed	1, 6	Prioritization Score	15/15
Year Added to Plan	2013	Timeline (estimated)	Ongoing	Implementation Priority	High
Hazard(s) Mitigated	Drought, Heat Wave/Extreme Heat, Flood, Harmful Algal Bloom, Invasive Species and Infestation, Severe Weather, Winter Weather				
Project Status	Continuous	If <i>Discontinued</i> , provide reason.		N/A	
Benefits (Loss Avoided)	High				
Lead Agency / Organization	Town of Skaneateles Town Board	Supporting Agency / Organization (If applicable)		N/A	
Additional Participating Jurisdictions (If applicable)	N/A				
Estimated Cost	Low	Potential Funding Source	General Fund (Staff Time)		
Critical Facility (Critical Facility located in 1% floodplain?)	No	Additional Details (optional)			



Mitigation Action	Develop, enhance, and maintain mutual aid agreements with surrounding municipalities and counties.				
Action Number	TSK-6	Goal(s) Addressed	1, 5, 6	Prioritization Score	15/15
Year Added to Plan	2013	Timeline <i>(estimated)</i>	Ongoing	Implementation Priority	High
Hazard(s) Mitigated	Drought, Heat Wave/Extreme Heat, Flood, Harmful Algal Bloom, Invasive Species and Infestation, Severe Weather, Winter Weather				
Project Status	Continuous	If <i>Discontinued</i> , provide reason.		N/A	
Benefits <i>(Loss Avoided)</i>	High				
Lead Agency / Organization	Town of Skaneateles Town Board	Supporting Agency / Organization <i>(If applicable)</i>	City of Syracuse, Onondaga County Health Department		
Additional Participating Jurisdictions <i>(If applicable)</i>	N/A				
Estimated Cost	Low	Potential Funding Source	General Fund (Staff Time)		
Critical Facility <i>(Critical Facility located in 1% floodplain?)</i>	No	Additional Details <i>(optional)</i>			



Mitigation Action	Upgrade and enhance stormwater management practices throughout the Town to mitigate stormwater flooding.				
Action Number	TSK-7	Goal(s) Addressed	1, 3	Prioritization Score	10/15
Year Added to Plan	2013	Timeline <i>(estimated)</i>	Ongoing	Implementation Priority	Medium
Hazard(s) Mitigated	Flood, Severe Weather				
Project Status	Continuous	If <i>Discontinued</i> , provide reason.		N/A	
Benefits <i>(Loss Avoided)</i>	High				
Lead Agency / Organization	Town of Skaneateles Highway Department	Supporting Agency / Organization <i>(If applicable)</i>		N/A	
Additional Participating Jurisdictions <i>(If applicable)</i>	N/A				
Estimated Cost	Low	Potential Funding Source	General Fund (Staff Time)		
Critical Facility <i>(Critical Facility located in 1% floodplain?)</i>	No	Additional Details <i>(optional)</i>			



Mitigation Action	Partner with New York State Department of Environmental Conservation, Syracuse University, Tri-County Skaneateles Lake Pure Water Association, Inc., and the Village of Skaneateles to eradicate Eurasian Water Milfoil and mitigate harmful algal blooms from Skaneateles Lake.				
Action Number	TSK-8	Goal(s) Addressed	4	Prioritization Score	7/15
Year Added to Plan	2013	Timeline <i>(estimated)</i>	Ongoing	Implementation Priority	Medium
Hazard(s) Mitigated	Harmful Algal Bloom, Invasive Species and Infestation				
Project Status	Continuous	If <i>Discontinued</i> , provide reason.		N/A	
Benefits <i>(Loss Avoided)</i>	Low				
Lead Agency / Organization	Town of Skaneateles Water Department, Town of Skaneateles Town Board	Supporting Agency / Organization <i>(If applicable)</i>	City of Syracuse Water Department		
Additional Participating Jurisdictions <i>(If applicable)</i>	N/A				
Estimated Cost	Low	Potential Funding Source	General Fund (Staff Time)		
Critical Facility <i>(Critical Facility located in 1% floodplain?)</i>	No	Additional Details <i>(optional)</i>			



Mitigation Action	Develop and implement a vegetation/tree management program to prevent trees from falling on roads, causing road closures, infrastructure damage, and power outages during extreme weather events.				
Action Number	TSK-9	Goal(s) Addressed	1, 4	Prioritization Score	13/15
Year Added to Plan	2019	Timeline (estimated)	Ongoing	Implementation Priority	High
Hazard(s) Mitigated	Severe Weather, Winter Weather				
Project Status	Continuous	If <i>Discontinued</i> , provide reason.		N/A	
Benefits (Loss Avoided)	High				
Lead Agency / Organization	Town of Skaneateles Highway Department	Supporting Agency / Organization (If applicable)		N/A	
Additional Participating Jurisdictions (If applicable)	N/A				
Estimated Cost	Low	Potential Funding Source	General Fund (Staff Time)		
Critical Facility (Critical Facility located in 1% floodplain?)	No	Additional Details (optional)			



Mitigation Action	Upgrade the Gully Road culvert to a steel structure with increased capacity to accommodate higher flows and prevent constrictions.				
Action Number	TSK-10	Goal(s) Addressed	1, 4	Prioritization Score	13/15
Year Added to Plan	2019	Timeline (estimated)	1 to 5 Years	Implementation Priority	High
Hazard(s) Mitigated	Flood, Severe Weather				
Project Status	In Progress/Not Yet Completed	<i>If Discontinued, provide reason.</i>	N/A		
Benefits (Loss Avoided)	High				
Lead Agency / Organization	Town of Skaneateles Highway Department	Supporting Agency / Organization (If applicable)	N/A		
Additional Participating Jurisdictions (If applicable)	N/A				
Estimated Cost	Medium	Potential Funding Source	General Fund (Staff Time), HMGP		
Critical Facility (Critical Facility located in 1% floodplain?)	No	Additional Details (optional)	The Gully Road culvert gets blocked with debris, causing further flooding. There is a need for consistent maintenance of the area; however, the problem originates on private property, and the Town does not have access to this section of Gully Road.		



Mitigation Action	Acquire and install standby (backup) power (i.e., emergency generator) for the Transportation Center, which houses school buses and the Town’s highway trucks and snowplows. In the event of a power outage, the facility lacks heat and cannot open the doors, disabling emergency vehicles and preventing emergency personnel from providing services after an extreme weather event. Furthermore, the facility can serve as a shelter.				
Action Number	TSK-11	Goal(s) Addressed	N/A	Prioritization Score	N/A
Year Added to Plan	2019	Timeline (estimated)	N/A	Implementation Priority	N/A
Hazard(s) Mitigated	Drought, Heat Wave/Extreme Heat, Flood, Invasive Species and Infestation, Severe Weather, Winter Weather				
Project Status	Complete	<i>If Discontinued, provide reason.</i>	N/A		
Benefits (Loss Avoided)	N/A				
Lead Agency / Organization	Town of Skaneateles Highway Department	Supporting Agency / Organization (If applicable)	N/A		
Additional Participating Jurisdictions (If applicable)	N/A				
Estimated Cost	N/A	Potential Funding Source	N/A		
Critical Facility (Critical Facility located in 1% floodplain?)	N/A	Additional Details (optional)			



Mitigation Action	Participate in Repetitive Loss and Severe Repetitive Loss outreach and education activities for property owners.				
Action Number	TSK-12	Goal(s) Addressed	2	Prioritization Score	14/15
Year Added to Plan	2019	Timeline <i>(estimated)</i>	Ongoing	Implementation Priority	High
Hazard(s) Mitigated	Flood				
Project Status	No Progress/Not Yet Started	<i>If Discontinued, provide reason.</i>	N/A		
Benefits <i>(Loss Avoided)</i>	Low				
Lead Agency / Organization	Town of Skaneateles Building & Codes Department (Floodplain Administrator)	Supporting Agency / Organization <i>(If applicable)</i>	N/A		
Additional Participating Jurisdictions <i>(If applicable)</i>	N/A				
Estimated Cost	Low	Potential Funding Source	General Fund (Staff Time)		
Critical Facility <i>(Critical Facility located in 1% floodplain?)</i>	No	Additional Details <i>(optional)</i>			



Mitigation Action	Acquire and install standby (backup) power (i.e., emergency generator) for the Village of Skaneateles Fire Department fire system to allow proper water pressure (i.e., pump station) for fire safety in the event of a power outage.				
Action Number	TSK-13	Goal(s) Addressed	6	Prioritization Score	14/15
Year Added to Plan	2019	Timeline (estimated)	4 to 5 Years	Implementation Priority	High
Hazard(s) Mitigated	Drought, Heat Wave/Extreme Heat, Flood, Severe Weather, Winter Weather				
Project Status	In Progress/Not Yet Completed	<i>If Discontinued, provide reason.</i>	N/A		
Benefits (Loss Avoided)	High				
Lead Agency / Organization	Town of Skaneateles Building & Codes Department, Village of Skaneateles Fire Department	Supporting Agency / Organization (If applicable)	N/A		
Additional Participating Jurisdictions (If applicable)	N/A				
Estimated Cost	High	Potential Funding Source	General Fund (Staff Time)		
Critical Facility (Critical Facility located in 1% floodplain?)	Yes	Additional Details (optional)	It is important to note that although this facility is a critical facility, it is not located in an SFHA; therefore, it is not listed in Section 9 of this Annex.		



Mitigation Action	Conduct stormwater management improvements to mitigate stormwater runoff that impacts private property and Fuller/Franklin Street.				
Action Number	TSK-14	Goal(s) Addressed	1, 4, 6	Prioritization Score	6/15
Year Added to Plan	2025	Timeline (estimated)	1 to 5 Years	Implementation Priority	Medium
Hazard(s) Mitigated	Flood, Severe Weather				
Project Status	New	If <i>Discontinued</i> , provide reason.		N/A	
Benefits (Loss Avoided)	High				
Lead Agency / Organization	Town of Skaneateles Highway Department	Supporting Agency / Organization (If applicable)		N/A	
Additional Participating Jurisdictions (If applicable)	N/A				
Estimated Cost	Medium	Potential Funding Source	General Fund (Staff Time), HMGP, FMA		
Critical Facility (Critical Facility located in 1% floodplain?)	No	Additional Details (optional)			



Mitigation Action	Implement a strategic, adaptive community-based resilience initiative to build long-term community resilience to drought. The initiative will utilize a multi-channel public outreach campaign to provide residents, businesses, and the agricultural community with practical knowledge and resources needed for drought mitigation strategies (e.g., water conservation, the use of drought-tolerant landscaping).				
Action Number	TSK-15	Goal(s) Addressed	2	Prioritization Score	15/15
Year Added to Plan	2025	Timeline (estimated)	2 to 4 Years	Implementation Priority	High
Hazard(s) Mitigated	Drought				
Project Status	New	If <i>Discontinued</i> , provide reason.		N/A	
Benefits (Loss Avoided)	Low				
Lead Agency / Organization	Town of Skaneateles Building & Codes Department	Supporting Agency / Organization (If applicable)		N/A	
Additional Participating Jurisdictions (If applicable)	N/A				
Estimated Cost	Low	Potential Funding Source	General Fund (Staff Time)		
Critical Facility (Critical Facility located in 1% floodplain?)	No	Additional Details (optional)			



Mitigation Action	Implement a strategic, adaptive community-based resilience initiative to build long-term community resilience against heat waves/extreme heat events. The initiative will utilize a multi-channel public outreach campaign to educate the public about public health illnesses associated with extreme heat, protective actions, and available resources to reduce risk and exposure during heat wave/extreme heat events. Outreach efforts will specifically target individuals who are particularly vulnerable during heat waves/extreme heat events, including, but not limited to, the elderly, young children, pregnant women, individuals with chronic illnesses, individuals without access to air conditioning, and outdoor workers (e.g., agricultural workers). Additionally, implementing climate adaptation measures, such as identifying community centers that can serve as cooling centers, will also be considered.				
Action Number	TSK-16	Goal(s) Addressed	2	Prioritization Score	15/15
Year Added to Plan	2025	Timeline (estimated)	2 to 4 Years	Implementation Priority	High
Hazard(s) Mitigated	Heat Wave/Extreme Heat				
Project Status	New	If <i>Discontinued</i> , provide reason.		N/A	
Benefits (Loss Avoided)	Low				
Lead Agency / Organization	Town of Skaneateles Building & Codes Department	Supporting Agency / Organization (If applicable)		N/A	
Additional Participating Jurisdictions (If applicable)	N/A				
Estimated Cost	Low	Potential Funding Source	General Fund (Staff Time)		
Critical Facility (Critical Facility located in 1% floodplain?)	No	Additional Details (optional)			



Mitigation Action	Establish a comprehensive program focused on proactive monitoring, safe manual breakup techniques, and debris management. This includes targeted training for local emergency responders (e.g., highway department personnel) to identify imminent ice jams and debris dams and perform safe manual intervention. Additionally, outreach and education for the public and farmers on recognizing and reporting potential jams early, and on providing guidelines for safe, limited intervention on their own properties.				
Action Number	TSK-17	Goal(s) Addressed	1, 2, 4, 5, 6	Prioritization Score	15/15
Year Added to Plan	2025	Timeline <i>(estimated)</i>	Over 4 Years	Implementation Priority	High
Hazard(s) Mitigated	Flood				
Project Status	New	<i>If Discontinued, provide reason.</i>	N/A		
Benefits <i>(Loss Avoided)</i>	Low				
Lead Agency / Organization	Town of Skaneateles Highway Department	Supporting Agency / Organization <i>(If applicable)</i>	N/A		
Additional Participating Jurisdictions <i>(If applicable)</i>	N/A				
Estimated Cost	Medium	Potential Funding Source	General Fund (Staff Time)		
Critical Facility <i>(Critical Facility located in 1% floodplain?)</i>	No	Additional Details <i>(optional)</i>			



APPENDIX A. HAZARD MAPS

These maps are based on the best available data at the time of the preparation of this Plan and are considered to be adequate for planning purposes. Maps have only been generated for those hazards that can be distinctly represented using available mapping technologies and data, and for which the Town of Skaneateles has significant vulnerability.

- **Figure 1** illustrates the jurisdiction's planning area boundary.
- **Figure 2** illustrates the critical facilities within the planning area.
- **Figure 3** illustrates the jurisdiction's Special Flood Hazard Area (SFHA), including the Flood Zones and the 500-year floodplain in the planning area. Flood Insurance Rate Maps (FIRMs) display flood zones, floodplain boundaries, and Base Flood Elevation (BFE), which are used for floodplain management, flood insurance ratings, and to determine flood insurance requirements. FIRMs show areas with a 1% chance of flooding each year, commonly known as the 100-year floodplains, and are illustrated as the SFHA (Flood Zones A, AE, and AO on the map). The 500-year floodplains show areas with a 0.2% chance of flooding each year.



Figure 1. Town of Skaneateles Planning Area

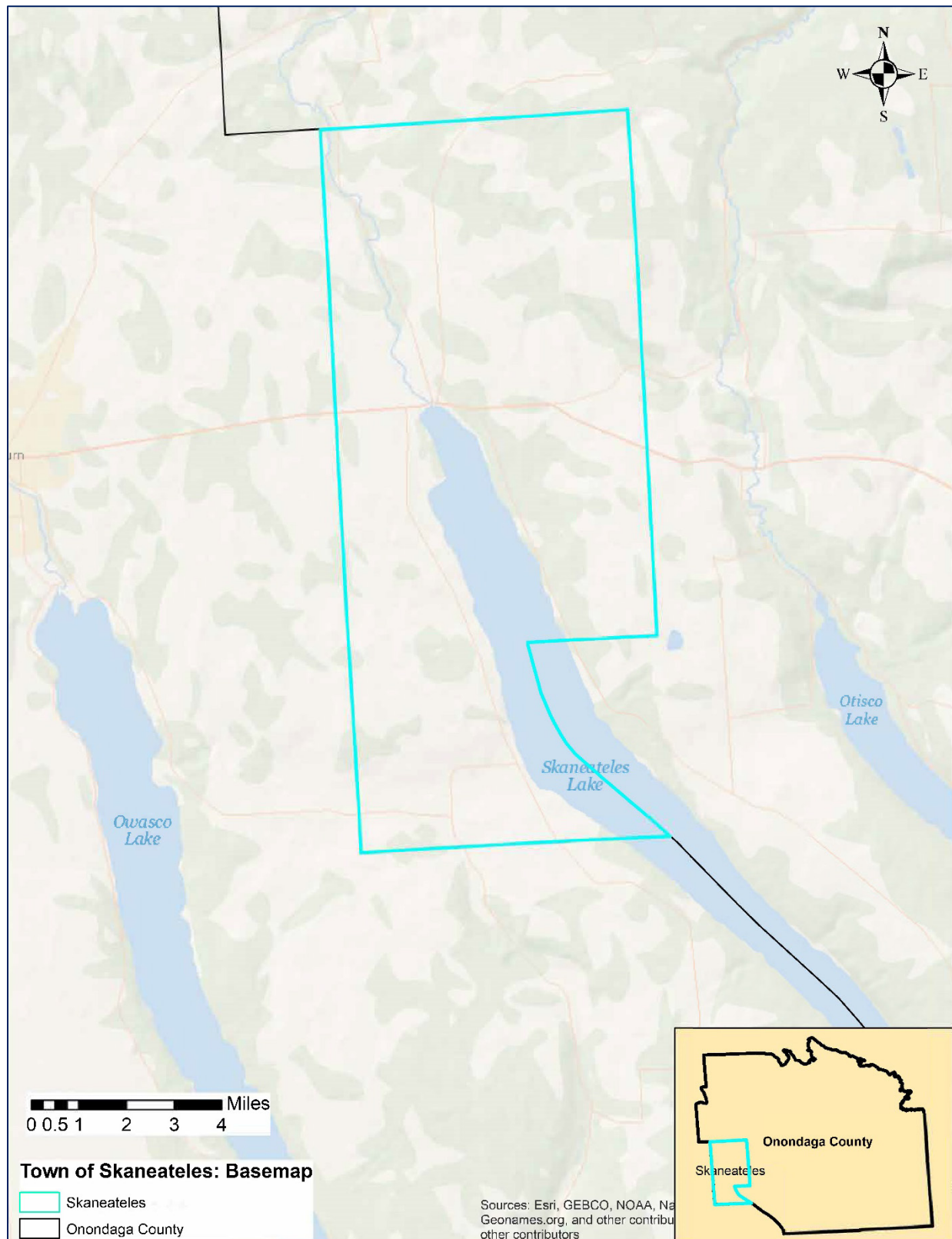




Figure 2. Critical Facilities

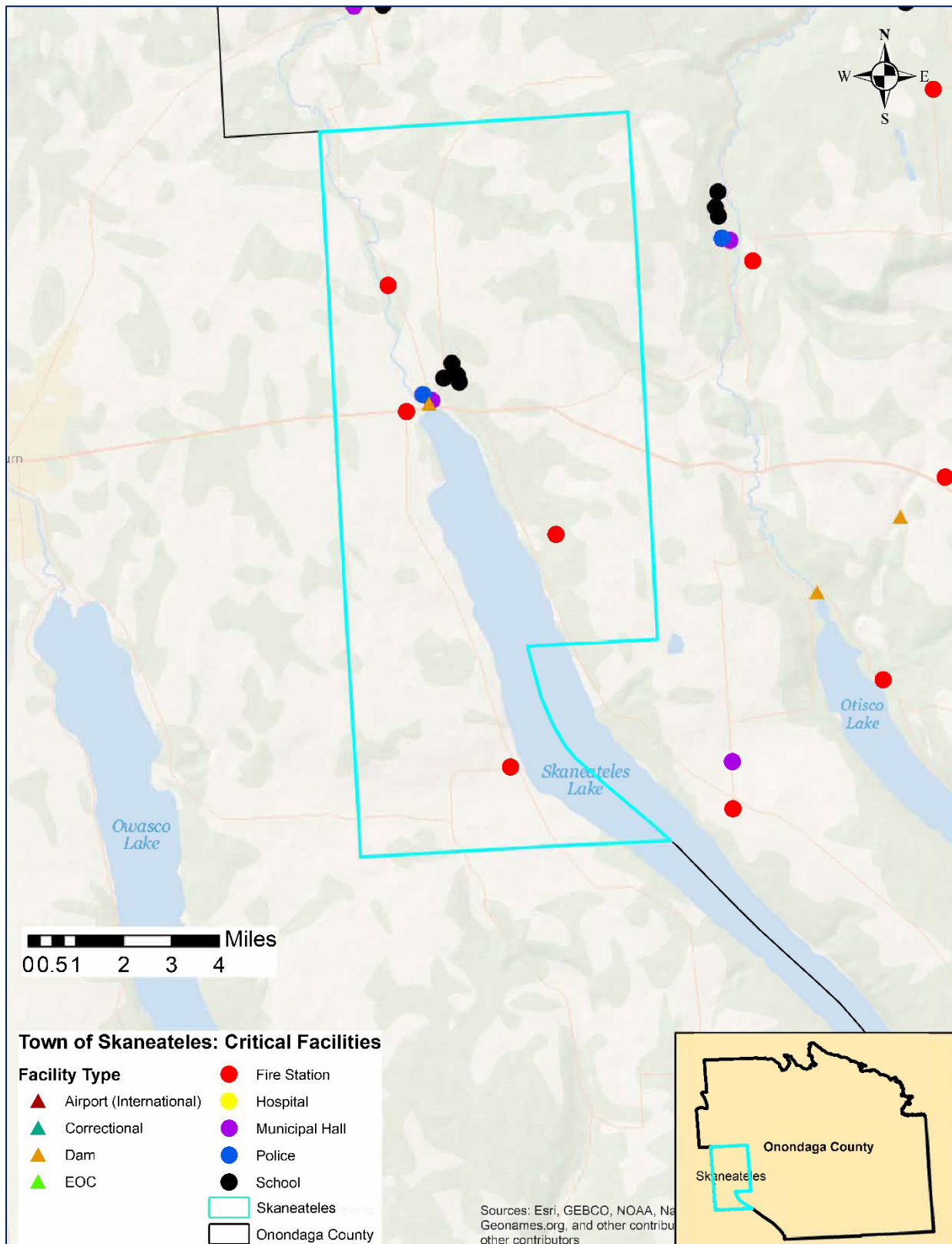
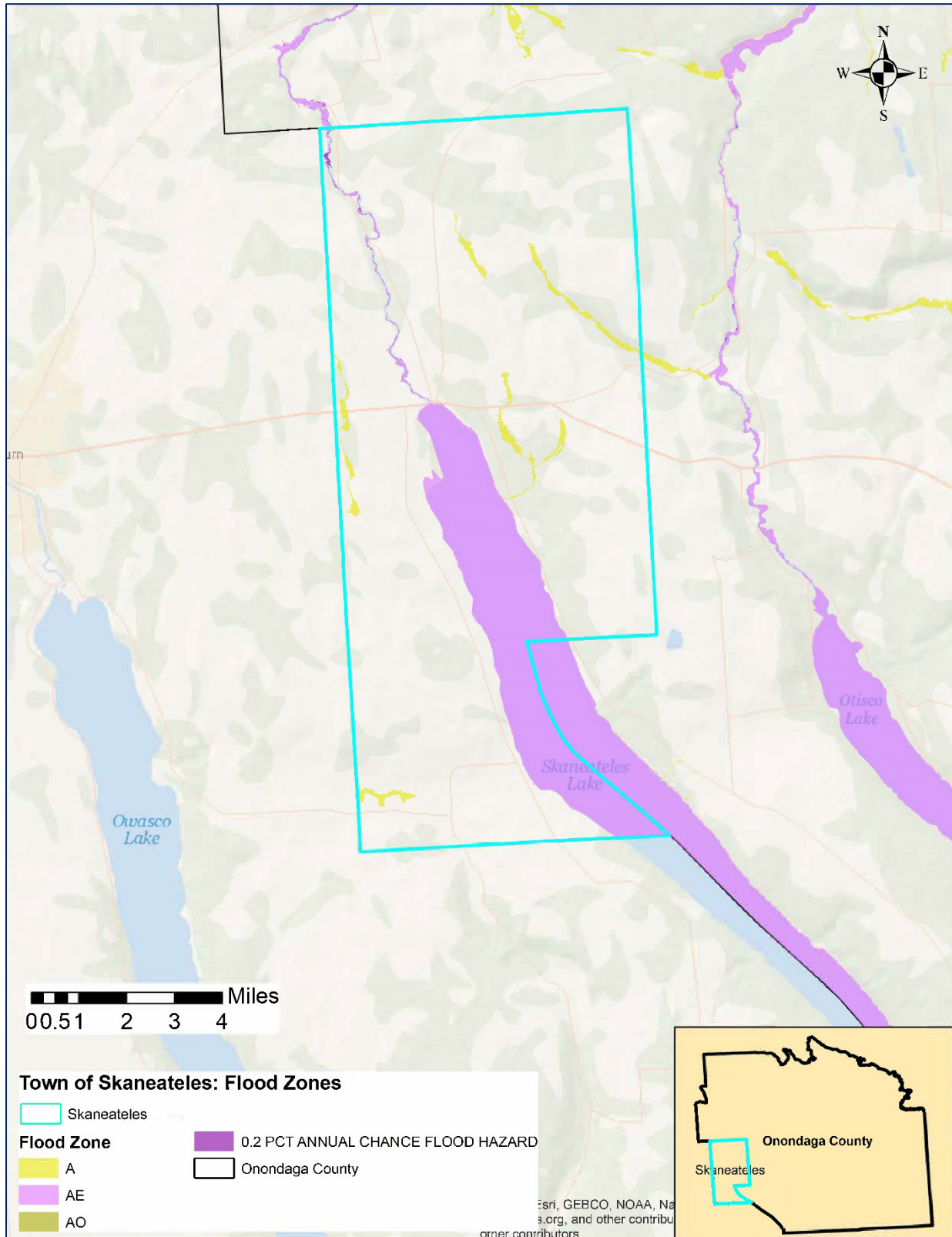




Figure 3. Special Flood Hazard Area





APPENDIX B. LETTER OF INTENT

**Statement of Intent to Participate in the
2024 Onondaga County Multi-Jurisdictional Hazard Mitigation Plan**

The purpose of this letter is to establish commitment from, and a cooperative working relationship between, all participating jurisdictions in the development and implementation of the 2024 Onondaga County Multi-Jurisdictional Hazard Mitigation Plan (HMP). In addition, the intent of this form is to ensure that the Plan update is developed in accordance with Title 44 of the Federal Code of Regulations Part 201.6; that the planning process is conducted in an open manner involving community stakeholders; that it is consistent with each participating jurisdiction's policies, programs, and authorities; and that it is an accurate reflection of the community's values.

To meet this requirement and to help reduce the loss of life and damage to property in the event of a natural disaster, our municipality intends to participate in a federally funded grant initiative to update the 2024 Onondaga County Multi-Jurisdictional Hazard Mitigation Plan.

We understand that the planning process will include a limited number of meetings and/or calls between Planning Team representatives and representatives from participating municipalities and agencies. The subject of the meeting(s) will be to:

- Inform participants on the needs and methods for identifying and prioritizing hazards;
- Share information on hazards affecting local jurisdictions;
- Provide information related to local assets, plans/ordinances, hazard events and damages, new development, etc. within the jurisdiction; and
- Determine possible projects to reduce the impact of future incidents involving hazards which are prerequisites to municipalities later applying for hazard mitigation grant funds.

We recognize the importance of having an updated multi-jurisdictional hazard mitigation plan to help safeguard the lives and property of our citizens and commit to participating in this process with Onondaga County.

Name of Jurisdiction: Town of Skaneateles

Name of Authorized Representative:
J.C. Legg

Signature of Authorized Representative:

Primary Point-of-Contact (POC):

Secondary Point-of-Contact (POC):

Name: Robert Herrmann
Title: Codes Enforcement Officer
Department: Building and Codes Department
Phone Number: 315-685-0833
Email: codes@townofskaneateles.com

Name: Timothy Dobrovosky
Title: Highway Superintendent
Department: Highway Department
Phone Number: 315-685-6718
Email: tdobrovosky@townofskaneateles.com

Please return this form to jefferyharrop@ongov.net, or mail to the Onondaga County Dept. of Planning, 335 Montgomery St, Syracuse, NY 13202. Questions, call Jeff at (315)435-2673.



APPENDIX C. PLAN ADOPTION

[Placeholder for adoption documentation after State and FEMA Approval]