

# 2025 Hazard Mitigation Plan

Onondaga County,  
New York

**Town of Marcellus  
Annex**





# TABLE OF CONTENTS

- 1. HAZARD MITIGATION LOCAL PLANNING TEAM.....1**
- 2. MUNICIPAL PROFILE.....1**
  - 2.1. Population .....1
  - 2.2. History and Cultural Resources .....2
- 3. GROWTH/DEVELOPMENT TRENDS.....2**
  - 3.1. Changes in Priority.....3
- 4. CAPABILITY ASSESSMENT.....3**
  - 4.1. Planning and Regulatory Capabilities .....3
  - 4.2. Administrative and Technical Capabilities .....6
  - 4.3. Fiscal Capabilities .....7
  - 4.4. Education and Outreach Capabilities .....7
  - 4.5. Community Classifications .....8
  - 4.6. Self-Assessment of Capability .....8
  - 4.7. Needs to Expand/Improve Capabilities.....9
- 5. NATIONAL FLOOD INSURANCE PROGRAM.....9**
  - 5.1. NFIP Floodplain Administrator .....10
  - 5.2. Repetitive Loss and Severe Repetitive Loss Property .....10
  - 5.3. Participation Activities.....11
    - 5.3.1. Regulatory .....11
- 6. HAZARD MITIGATION PLAN INTEGRATION .....12**
  - 6.1. Existing Plan Integration.....13
  - 6.2. Potential Future Integration .....13
- 7. SIGNIFICANT HAZARD PAST EVENTS .....14**
- 8. HAZARD VULNERABILITY AND IMPACT ASSESSMENT .....15**
  - 8.1. Future Major Assets .....18
- 9. CRITICAL FACILITIES FLOOD RISK.....19**
- 10. HAZARD RISK RANKING.....19**
- 11. MITIGATION ACTIONS .....22**
- APPENDIX A. HAZARD MAPS .....39**
- APPENDIX B. LETTER OF INTENT.....43**
- APPENDIX C. PLAN ADOPTION .....44**



This Annex details the hazard mitigation elements specific to the Town of Marcellus, a participating jurisdiction in the 2025 Onondaga County Hazard Mitigation Plan update. This Annex is not intended to be a standalone document but supplements the information contained in **Volume 1 (Countywide Planning Elements)**. Therefore, all sections of **Volume 1**, including the planning process, hazard identification and risk assessment, mitigation strategy (includes mitigation goals and objectives), and plan maintenance, apply to and were met by the Town of Marcellus. This Annex provides additional information specific to the Town, with a focus on providing additional details on the hazard risk assessment and mitigation strategy (i.e., mitigation actions) for this community.

## 1. HAZARD MITIGATION LOCAL PLANNING TEAM

The following individuals have been identified as the Town of Marcellus Local Planning Team for the 2025 Onondaga County Hazard Mitigation Plan. These individuals participated in all aspects of the planning process and developed a risk and vulnerability assessment, capability assessment, and mitigation strategy (including mitigation actions) specific to the jurisdiction.

Name	Title	Department
Laurie Stevens	Town Supervisor	Town Board
John Houser	Code Enforcement Officer	Code Enforcement Office

## 2. MUNICIPAL PROFILE

The Town of Marcellus lies in the southeastern interior of Onondaga County with a total area of 32.7 square miles. The Town of Marcellus is bordered by the Town of Camillus to the north, the towns of Spafford and Otisco to the south, the Town of Onondaga to the east, and the Town of Skaneateles to the west. The Village of Marcellus is located within the southern section of the Town. *The Village of Marcellus has developed its own dedicated annex as part of this Plan.* United States Route 20 is an east-west highway through the southern portion of the Town. The major body of water in the Town of Marcellus is Otisco Lake, with Nine Mile Creek originating within the Town at Otisco Lake and ending at Onondaga Lake. There are several communities located within the Town – Clintonville (hamlet), Marcellus Falls (hamlet), Marietta (hamlet), Rose Hill (hamlet), Shamrock (hamlet), Thorn Hill (hamlet), and Sage Meadows (hamlet).

### 2.1. Population

In 2023, the Town of Marcellus had a population of 5,963, a 2.5% decrease from the estimated 2018 population of 6,117. **Table 1** summarizes population distribution between 2010 and 2023, and the percentage of the 2023 population that is under five (5) years old, over 65 years old, and living below the poverty level.

**Table 1. Population Trends**

Population				Underserved Population		
2010 <sup>1</sup>	2018 <sup>2</sup>	2023 <sup>3</sup>	Population Change (2018 – 2023)	Youth <sup>3</sup> (Under 5 years old)	Elderly <sup>3</sup> (Over 65 years old)	Below Poverty Level <sup>3</sup>
6,210	6,117	5,963	-2.5%	3.0%	23.7%	5.9%

<sup>1</sup> United States Census Bureau. (2023). QuickFacts: Town of Marcellus. Retrieved from <https://www.census.gov/quickfacts/fact/table/marcellustownonondagacountynewyork>.

<sup>2</sup> United States Census Bureau. (2018). DP05: ACS Demographic and Housing Estimates (2018: 5-Year Estimates Data Profiles). Retrieved from <https://data.census.gov/table/ACSDP5Y2018.DP05?g=060XX00US3606745491>.

<sup>3</sup> United States Census Bureau. (2023). QuickFacts: Town of Marcellus. Retrieved from <https://www.census.gov/quickfacts/fact/table/marcellustownonondagacountynewyork>.



## 2.2. History and Cultural Resources

The territory of Marcellus was part of the lands of the Onondaga Nation. Marcellus was a named township in the former Central New York Military Tract. It was first settled by outsiders around 1794. It is speculated that the first settler in Marcellus was Sargent Kaydood Dooley of the colonial militia. This original military township contained not only the present Town of Marcellus, but nearly all of what is now the Town of Skaneateles, the northern portion of the Town of Spafford, and the northwest two-thirds of the Town of Otisco, including Otisco Lake and the site of Otisco village. The Town of Marcellus was organized contemporaneously with the formation of Onondaga County on March 5, 1794. It contained the territory of the present Marcellus, all of Camillus, Elbridge, Van Buren, Skaneateles, Geddes, and a part of Onondaga. The Town of Geddes was removed in 1798, the township of Camillus in 1799, and Otisco in 1806. In 1830, the western portion of the Town was used for the new Town of Skaneateles. Marcellus regained territory in 1840 from Spafford and Otisco.

## 3. GROWTH/DEVELOPMENT TRENDS

Understanding development trends can help evaluate whether the jurisdiction’s vulnerability has increased, decreased, or remained the same. **Table 2** summarizes the total housing units built in the Town of Marcellus between 2019 and 2023.<sup>4</sup>

**Table 2. Housing Units Built (2019 – 2023)**

Type	2019	2020	2021	2022	2023
Single-Family Units	5	6	7	1	5
Multi-Family Units	0	1	0	0	0
2-Family Units	0	1	0	0	0
3-Family Units	0	0	0	0	0
Apartment Units	0	0	0	0	0
<b>Total Units</b>	<b>5</b>	<b>7</b>	<b>7</b>	<b>1</b>	<b>5</b>

The Onondaga County Housing Needs Assessment, a component of the County’s Comprehensive Plan, explores the County’s housing market and its challenges in greater depth and argues that one of the County’s greatest housing needs is an improved approach to land use planning. In the Assessment, it is stated that there are similarities and affinities between certain groups of municipalities. Therefore, the County was sub-divided into seven (7) sub-regions, each of which covers multiple municipalities. The municipalities within each sub-region, share sufficient geographic and market characteristics to be treated as a single place for purposes of further understanding the county housing market.

The Town of Marcellus is under the Rural Countryside sub-region. This sub-region has a greater proportion of married couple families, both elderly (17%) and non-elderly (65%), and relatively fewer single parent families and people living alone. Total household growth between 2000 and 2020 was 8.8% (the average of all the County towns/villages was 12.0%). Growing demand in the County would likely support continued large-lot homebuilding within the towns. Villages, without a clear market for aging housing in mostly remote locations, would slowly continue on their early 20<sup>th</sup> Century trajectory. If household growth in the towns within this sub-region grew sufficiently, it could encourage the development of some additional commercial uses. Under a low-growth scenario, it is likely that the towns within Rural Countryside could continue to add large-lot houses in a rural setting, though construction would likely slow. Market changes would happen gradually, with strong areas remaining strong for a period of time.

<sup>4</sup> Data provided by the Onondaga County Department of Planning based on Real Property Data (2024).



Table 3 summarizes major recent residential/commercial development (in the past five (5) years), and any known or anticipated significant residential/commercial development and significant infrastructure development, as of December 2024, that is likely to occur within hazard-prone areas in the next five (5) years.

Table 3. Growth and Development

Property or Development Name	Location	Type <i>(e.g., residential, commercial)</i>	# of Units/ Structures	Known Hazard Zone(s)	Status of Development
<b>Recent Development in the Past Five (5) Years (2019 – 2024)</b>					
The Town has not experienced significant development in hazard-prone areas over the past five (5) years.					
<b>Known or Anticipated Development in the Next Five (5) Years (2024 – 2029)</b>					
The Town does not anticipate significant development in hazard-prone areas over the next five (5) years.					

### 3.1. Changes in Priority

In the last five (5) years, the Town of Marcellus has shifted its priorities toward solar power projects, and is currently updating the Town’s Comprehensive Plan and Zoning Ordinance. Additionally, mitigation actions from the previous Plan were updated, and a more concerted effort to achieve equitable outcomes for all communities, including underserved communities and socially vulnerable populations, has been implemented.

## 4. CAPABILITY ASSESSMENT

Federal regulations require hazard mitigation plans to identify goals for reducing long-term vulnerabilities to the identified hazards in the planning area (Section 201.6(c)(3)(i)). A critical step in developing specific hazard mitigation actions and projects is assessing existing authorities, policies, programs, and resources and capabilities, and using or modifying local tools to reduce losses and vulnerability from profiled hazards.

A capability assessment was conducted for the Town of Marcellus’ authorities, policies, programs, and resources. Goals and mitigation actions were developed using input from this assessment. Information regarding the Town’s implementation of and continued participation in the National Flood Insurance Program (NFIP) can be found in Section 5 of this Annex.

The Local Planning Team assessed the Town’s capabilities that can contribute to the reduction of long-term vulnerabilities to hazards. The capabilities include the following categories:

- Planning and Regulatory Capabilities
- Administrative and Technical Capabilities
- Fiscal Capabilities
- Education and Outreach Capabilities

Additionally, ways to expand and improve these existing policies and programs to integrate hazard mitigation into the Town's day-to-day activities were considered.

### 4.1. Planning and Regulatory Capabilities

Table 4 includes local ordinances, policies, and laws to manage growth and development (e.g., land use plans, capital improvement plans, transportation plans, emergency preparedness and response plans, building codes, and zoning ordinances).



**Table 4. Planning and Regulatory Tools**

Capability Category	Yes/No	Authority <i>(local, county, state, federal)</i>	Responsible Department/ Agency	Code Citation and Comments <i>(e.g., Code Chapter, name of plan, explanation of authority, etc.)</i>
<b>Planning Capability</b>				
Comprehensive Plan	Yes	Local	Planning Board	The Town’s Comprehensive Plan is undergoing an update (2024)
Capital Improvements Plan	No	N/A	N/A	N/A
Floodplain Management / Basin Plan	No	N/A	N/A	N/A
Stormwater Management Plan	Yes	Local	Code Enforcement Office	Member of the Central New York (CNY) Stormwater Coalition
Open Space Plan	No	N/A	N/A	N/A
Stream Corridor Management Plan	Yes	Local	Code Enforcement Office	
Watershed Management or Protection Plan	Yes	Local	Code Enforcement Office	
Economic Development Plan	Yes	Local	Planning Board, Zoning Board of Appeals	
Comprehensive Emergency Management Plan	No	N/A	N/A	N/A
Emergency Operation Plan	No	N/A	N/A	N/A
Evacuation Plan	No	N/A	N/A	N/A
Post-Disaster Recovery Plan	No	N/A	N/A	N/A
Transportation Plan	No	N/A	N/A	N/A
Strategic Recovery Planning Report	No	N/A	N/A	N/A
Climate Adaptation Plan	No	N/A	N/A	N/A
Resilience Plan	No	N/A	N/A	N/A
<b>Regulatory Capability</b>				
Building Code	Yes	State, Local	Code Enforcement Office	Chapter 16 of the New York State Building Code Chapter 90 of the Town Code
Zoning Ordinance	Yes	Local	Code Enforcement Office	Chapter 235 of the Town Code



Capability Category	Yes/No	Authority (local, county, state, federal)	Responsible Department/ Agency	Code Citation and Comments (e.g., Code Chapter, name of plan, explanation of authority, etc.)
Subdivision Ordinance	Yes	Local	Code Enforcement Office	Chapter 205 of the Town Code
NFIP Flood Damage Prevention Ordinance	Yes	Local	Code Enforcement Office	Chapter 112 of the Town Code
NFIP: Cumulative Substantial Damages	No	N/A	N/A	N/A
NFIP: Freeboard	Yes	State, Local	Code Enforcement Office	Chapter 16 of the New York State Building Code  State mandated two (2) feet above the BFE for all construction, both residential and non-residential.
Growth Management Ordinances	Yes	Local	Code Enforcement Office	Chapters 205 and 235 of the Town Code  The Town’s Comprehensive Plan is undergoing an update (2024)
Site Plan Review Requirements	Yes	Local	Code Enforcement Office	Chapter 235-28 of the Town Code
Stormwater Management Ordinance	Yes	Local	Code Enforcement Office	Chapter 193 of the Town Code
Municipal Separate Storm Sewer System (MS4)	Yes	State, County, Local	Code Enforcement, Highway Department	Permits are required for stormwater discharges from MS4s in urbanized areas and for construction activities disturbing one (1) or more acres. The Town has been automatically designated as a regulated MS4 and required to develop a comprehensive stormwater management program.
Natural Hazard Ordinance	Yes	Local	Highway Department	
Post-Disaster Recovery Ordinance	Yes	Local	Highway Department	
Real Estate Disclosure Requirement	Yes	State	New York State Department of State, Real Estate Agent	New York Code – Article 14 §460-467 (Property Condition Disclosure Act)
Other (Special Purpose Ordinances [i.e., sensitive areas, steep slope])	No	N/A	N/A	N/A



## 4.2. Administrative and Technical Capabilities

The administrative and technical capabilities listed in **Table 5** include community (i.e., public and private) staff, their skills, and tools that can be used for mitigation planning and implementation. This capability includes engineers, planners, emergency managers, Geographic Information System (GIS) analysts, building inspectors, grant writers, and floodplain managers. Small communities may rely on other government entities, such as counties or special districts, for resources.

**Table 5. Administrative and Technical Capabilities**

Capability	Yes/No	Position/Department/Agency
<b>Administrative Capability</b>		
Planning Board	Yes	Planning Board
Mitigation Planning Committee	No	N/A
Environmental Board/Commission	No	N/A
Open Space Board/Committee	No	N/A
Economic Development Commission/Committee	No	N/A
Maintenance programs to reduce risk	Yes	Highway Department
Mutual aid agreements	Yes	Highway Department Fire Department
<b>Technical/Staffing Capability</b>		
Planner(s) or engineer(s) with knowledge of land development and land management practices	Yes	Zoning Board of Appeals Engineering Consultant
Engineer(s) or professional(s) trained in construction practices related to buildings and/or infrastructure	Yes	Zoning Board of Appeals Code Enforcement Office Fire Inspector Stormwater Manager Engineering Consultant
Planners or engineers with an understanding of natural hazards	Yes	Planning Board Zoning Board of Appeals Engineering Consultant
NFIP Floodplain Administrator	Yes	Code Enforcement Officer, Code Enforcement Office
Surveyor(s)	Yes	Surveying Consultant
Personnel skilled or trained in GIS applications	Yes	Engineering Consultant
Scientist familiar with natural hazards	No	N/A
Warning systems/services	Yes	Onondaga County Emergency Communication (911)
Emergency Manager	Yes	Town Supervisor, Town Board
Grant writer(s)	No	N/A
Staff with expertise or training in benefit/cost analysis	No	N/A
Professionals trained in conducting damage assessments	No	N/A



### 4.3. Fiscal Capabilities

**Table 6** lists fiscal capabilities available to the Town that may be used to implement mitigation activities to reduce risk and enhance resiliency. This capability includes available funding sources from local budgets, state and federal grants, potential cost-sharing arrangements with private entities, existing insurance policies, and the ability to generate additional revenue through fees and bonds related to mitigation.

**Table 6. Fiscal Capabilities**

Financial Resources	Accessible or Eligible to Use
Community Development Block Grants (CDBG, CDBG-DR)	Yes
Federal Hazard Mitigation Assistance Program ( <i>i.e.</i> , Hazard Mitigation Grant Program (HMGP), HMGP Post Fire, Flood Mitigation Assistance (FMA) Program)	Yes
Capital Improvements Project Funding	Yes
Authority to Levy Taxes for specific purposes	Yes
User fees for water, sewer, gas, or electric service	No
Impact fees for homebuyers or developers of new development/homes	No
Stormwater Utility Fee	No
Incur debt through general obligation bonds	Yes
Incur debt through special tax bonds	Yes
Incur debt through private activity bonds	No
Withhold public expenditures in hazard-prone areas	No
Other federal or state funding programs	Yes
Open Space Acquisition funding programs	No

### 4.4. Education and Outreach Capabilities

**Table 7** lists the Town’s education and public outreach capabilities that can be used to inform residents about potential hazards, educate on mitigation strategies, and encourage proactive actions to reduce the community’s impacts to disasters. These capabilities include fire safety programs, hazard awareness campaigns, public information, and communications offices.

**Table 7. Education and Outreach Resources**

Resource	Yes/No	Position/Department/Agency
Public Information Officer	No	N/A
Personnel skilled or trained in website development	No	N/A
Hazard mitigation information available on the jurisdiction’s website	Yes	Codes Office
Utilize social media for hazard mitigation education	Yes	Parks & Recreation Office <i>Facebook:</i> <a href="https://www.facebook.com/pages/Town-of-Marcellus-Parks-Recreation/150263084984690">facebook.com/pages/Town-of-Marcellus-Parks-Recreation/150263084984690</a> <i>X:</i> <a href="https://twitter.com/Park_And_Rec">x.com/Park_And_Rec</a>



Resource	Yes/No	Position/Department/Agency
Citizen boards or commissions that address issues related to hazard mitigation	No	N/A
Other programs already in place that could be used to communicate hazard-related information	No	N/A
An established warning system for hazard events	Yes	Onondaga County Emergency Communication (911)

#### 4.5. Community Classifications

The community classification relates to the community’s ability to provide effective services to reduce its vulnerability to the identified hazards. These classifications can be viewed as a gauge of the community’s capabilities across all phases of emergency management (i.e., preparedness, response, recovery, and mitigation) and are used as underwriting parameters to determine the costs of various insurance forms. **Table 8** summarizes classifications for community programs available to the Town of Marcellus.

**Table 8. Community Classifications**

Program	Yes/No	Classification <i>(if applicable)</i>	Date Classified <i>(if applicable)</i>
Community Rating System (CRS)	No	N/A	N/A
Building Code Effectiveness Grading Schedule (BCEGS)	Yes	Class 4	2019
Public Protection (ISO Fire Protection Classes 1 to 10)	Yes	04/4x	June 2017
New York State Department of Environmental Conservation Climate Smart Community	No	N/A	N/A
Storm Ready Certification	No	N/A	N/A
Firewise Communities classification	No	N/A	N/A
Natural disaster/safety programs in/for schools	No	N/A	N/A
Organizations with mitigation focus (advocacy group, non-government)	No	N/A	N/A
Public private partnership initiatives addressing disaster-related issues	No	N/A	N/A

#### 4.6. Self-Assessment of Capability

**Table 9** provides an approximate measure of the Town of Marcellus’ capability to work in a hazard mitigation capacity and/or effectively implement hazard mitigation strategies to reduce hazard vulnerabilities.



**Table 9. Self-Assessment Capability for the Municipality**

Capability Area	Degree of Hazard Mitigation Capability		
	<i>Limited</i> <i>(If limited, what are your obstacles?)</i>	<i>Moderate</i>	<i>High</i>
Planning and Regulatory Capabilities			<b>X</b>
Administrative and Technical Capabilities	<b>X</b> <i>(Staff time is limited, resulting in limited ability to dedicate time to hazard mitigation)</i>		
Fiscal Capabilities	<b>X</b> <i>(Staff time is limited, resulting in limited ability to dedicate time to hazard mitigation)</i>		
Education and Outreach Capabilities	<b>X</b> <i>(Staff time is limited, resulting in limited ability to dedicate time to hazard mitigation)</i>		
Community Political Capabilities		<b>X</b>	
Community Resiliency Capabilities			<b>X</b>
Capability to integrate mitigation into municipal processes and activities	<b>X</b> <i>(Staff time is limited, resulting in limited ability to dedicate time to hazard mitigation)</i>		

**4.7. Needs to Expand/Improve Capabilities**

Based on the capability self-assessment in Section 4.6, the Town of Marcellus identified existing authorities, policies, programs, funding, and/or resources that need to be expanded and/or improved in order to support the implementation of the hazard mitigation initiatives identified in this Plan (e.g., mitigation actions).

- To increase the Town’s capability to implement hazard mitigation, apply for hazard mitigation grants, and fund the local match for hazard mitigation grants, the Town needs to expand its grant writing capabilities by potentially hiring more grant writers.
- Town codes and ordinances (e.g., building, zoning, protecting steep slopes, wetlands) should be reviewed based on developing trends in identified hazards and mitigation measures that can make them more effective at preventing losses.

**5. NATIONAL FLOOD INSURANCE PROGRAM**

The Town of Marcellus is a member of the National Flood Insurance Program (NFIP), but has chosen not to participate in the NFIP Community Rating System (CRS) Program. The Town is in good standing with the NFIP through adoption and enforcement of floodplain management requirements (e.g., regulating all new and substantially improved construction in Special Hazard Flood Areas), floodplain identification and mapping, and flood insurance outreach to the community. The Town’s NFIP participation information is listed in **Table 10**.

**Table 10. NFIP Participation Information**

CID	NFIP Participation Date	Current Effective FIRM Date	CRS Entry Date	CRS Current Effective Date	CRS Rating
360585	5/3/1974	11/4/2016	N/A	N/A	N/A



### 5.1. NFIP Floodplain Administrator

All NFIP participating jurisdictions have a designated Floodplain Administrator who is charged with enforcing floodplain regulations, routinely monitoring the floodplains, and providing community assistance, such as encouraging owners to maintain flood insurance. The Town of Marcellus Floodplain Administrator information is listed in **Table 11**.

**Table 11. Floodplain Administrator**

Name	Title	Department	Phone Number
John Houser	Code Enforcement Officer	Code Enforcement Office	(315) 673-3269 (Ext. 4)

### 5.2. Repetitive Loss and Severe Repetitive Loss Property

FEMA defines a Repetitive Loss property as an NFIP-insured property meeting at least one (1) of the following paid loss criteria since 1978, regardless of any changes in ownership:

- Four (4) or more separate claims payments greater than \$5,000 each (including building and contents payment).
- Two (2) or more separate flood insurance claims payments (building payments only), where the total of the payments is greater than the property’s current value.

Additionally, to receive a designation, at least two (2) of the claim payments must occur within 10 years of one another.<sup>5</sup>

A Severe Repetitive Loss property is defined by FEMA as any NFIP-insured single-family or multi-family residential building meeting at least one (1) of the following paid loss criteria since 1978 or from a building constructed after 1978, regardless of any changes in ownership:<sup>6</sup>

- That has incurred flood-related damage for which four (4) or more separate claims payments have been made, with the amount of each claim (including building and contents payments) exceeding \$5,000, and with the cumulative amount of such claims payments exceeding \$20,000.
- For which at least two (2) separate claims payments (building payments only) have been made under such coverage, with the cumulative amount of such claims exceeding the market value of the building.

**Table 12** summarizes FEMA Repetitive Loss and Severe Repetitive Loss properties within the Town of Marcellus.

<sup>5</sup> Federal Emergency Management Agency, National Flood Insurance Program. (2023). A Policyholder’s Guide to Severe Repetitive Loss. Retrieved from [https://agents.floodsmart.gov/sites/default/files/fema\\_nfip-policyholders-guide-severe-repetitive-loss\\_brochure\\_07-2023.pdf](https://agents.floodsmart.gov/sites/default/files/fema_nfip-policyholders-guide-severe-repetitive-loss_brochure_07-2023.pdf).

<sup>6</sup> Federal Emergency Management Agency, National Flood Insurance Program. (2021). National Flood Insurance Program: Flood Insurance Manual. Retrieved from [https://www.fema.gov/sites/default/files/documents/fema\\_nfip-all-flood-insurance-manual-apr-2021.pdf](https://www.fema.gov/sites/default/files/documents/fema_nfip-all-flood-insurance-manual-apr-2021.pdf).



**Table 12. Repetitive Loss and Severe Repetitive Loss Properties**

Repetitive Loss Properties		Severe Repetitive Loss Properties	
Total	Occupancy	Total	Occupancy
0	--	0	--
<p><b>Occupancy Type:</b> Single Family = Single family residence • Two (2)-Four (4) Unit Residential Building = Two (2)-four (4) unit residential building • More Than Four (4) Units Residential Building = Residential building with more than four (4) units • Non-Residential Building = Non-residential building • Non-Residential Business = Non-residential business • Single Family Residential Building = Single-family residential building with the exception of a mobile home or a single residential unit within a multi-unit building • Residential (2, 3, or 4 units) Non-Condo Building = Residential non-condo building with two (2), three (3), or four (4) units seeking insurance on all units • Residential (5 or more units) Non-Condo Building = Residential non-condo building with 5 or more units seeking insurance on all units • Residential Mobile/Manufactured Home = Residential mobile/manufactured home • Residential Condo Association = Residential condo association seeking coverage on a building with one (1) or more units • Single Residential Unit = Single residential unit within a multi-unit building • Non-Residential Mobile/manufactured Home = Non-residential mobile/manufactured home • Non-Residential Building = Non-residential building • Non-Residential Unit = Non-residential unit within a multi-unit building</p>			

Table 13 summarizes the NFIP active policies and coverage in force data for the Town of Marcellus.

**Table 13. NFIP Policies**

NFIP Policies	Insurance in Force	Total Claims Paid	Sum of Claims Paid
5	\$4,350	4	\$8,225

### 5.3. Participation Activities

The Town of Marcellus NFIP participation over the last five (5) years includes the following:

- Provides the following services – permit review, GIS, inspections, and engineering capability.
- Enforces local floodplain regulations and monitors compliance.
- Floodplain management regulations meet or exceed FEMA or State minimum requirements.

#### 5.3.1. Regulatory

##### Flood Damage Prevention Ordinance

The Town of Marcellus’ Flood Damage Prevention Chapter (*Chapter 112 of the Town Code*) was adopted to promote the public health, safety, and general welfare, and to minimize public and private losses due to flood conditions in specific areas by provisions designed to:

- Regulate uses which are dangerous to health, safety and property due to water or erosion hazards, or which result in damaging increases in erosion or in flood heights or velocities.
- Require that uses vulnerable to floods, including facilities which serve such uses, be protected against flood damage at the time of initial construction.
- Control the alteration of natural floodplains, stream channels, and natural protective barriers which are involved in the accommodation of floodwaters.
- Control filling, grading, dredging and other development which may increase erosion or flood damages.
- Regulate the construction of flood barriers which will unnaturally divert floodwaters or which may increase flood hazards to other lands.
- Qualify for and maintain participation in the NFIP.



The objectives of this Chapter are to:

- Protect human life and health.
- Minimize expenditure of public money for costly flood control projects.
- Minimize the need for rescue and relief efforts associated with flooding and generally undertaken at the expense of the general public.
- Minimize prolonged business interruptions.
- Minimize damage to public facilities and utilities, such as water and gas mains, electric, telephone, and sewer lines, streets and bridges located in areas of special flood hazard.
- Help maintain a stable tax base by providing for the sound use and development of areas of special flood hazard so as to minimize future flood blight areas.
- Provide that developers are notified that property is in an area of special flood hazard.
- Ensure that those who occupy the areas of special flood hazard assume responsibility for their actions.

### Substantial Damage

*Substantial damage* means damage of any origin sustained by a structure whereby the cost of restoring the structure to its before damaged condition would equal or exceed 50% of the market value of the structure before the damage occurred. (Chapter 112 of the Town Code)

### Substantial Improvement

*Substantial improvement* means any reconstruction, rehabilitation, addition, or other improvement of a structure, the cost of which equals or exceeds 50% of the market value of the structure before the "start of construction" of the improvement. The term includes structures which have incurred "substantial damage," regardless of the actual repair work performed. The term does not, however, include either:

- A. Any project for improvement of a structure to correct existing violations of state or local health, sanitary, or safety code specifications which have been identified by the local code enforcement official and which are the minimum necessary to assure safe living conditions; or
- B. Any alteration of an "historic structure," provided that the alteration will not preclude the structure's continued designation as an "historic structure." (Chapter 112 of the Town Code)

There are other local ordinances, plans, or programs (e.g., site plan review) that support floodplain management and meet the NFIP requirements.

### Substantial Damage/Substantial Improvement Determination Process

The Town of Marcellus' Substantial Damage/Substantial Improvement determination process ensures compliance with the NFIP and the local floodplain management ordinances (as outlined earlier in this section). To determine whether a structure has sustained Substantial Damage/Substantial Improvement after a flood event, the Town building inspectors conduct an analysis and review of the structure or, if needed, with the assistance of a registered design professional (e.g., architect, engineer).

## 6. HAZARD MITIGATION PLAN INTEGRATION

For a community to successfully reduce long-term risk, hazard mitigation must be integrated into day-to-day planning mechanisms and initiatives. Plan integration is the process by which communities critically assess the



existing planning framework and align efforts with the goal of reducing long-term risks and building a more resilient community. It involves a two (2) way exchange of information and incorporation of ideas and concepts between hazard mitigation plans and other community plans. In particular, plan integration involves incorporating hazard mitigation principles and actions into other plans and integrating planning mechanisms into hazard mitigation plans. Plan integration involves community plans, policies, codes, and programs that guide development, roles, and responsibilities in implementing these capabilities. Additionally, plan integration is achieved through the involvement of key staff and community officials in collaborative hazard mitigation planning.

### 6.1. Existing Plan Integration

A hazard mitigation plan must explain how the jurisdiction incorporated the previous Plan update over the last five (5) years to demonstrate progress in local mitigation efforts. During the performance period since the adoption of the previous Hazard Mitigation Plan, the Town of Marcellus has made progress in integrating components of the hazard mitigation strategy (e.g., goals, objectives, and actions) into planning initiatives and mechanisms. **Table 14** highlights the planning mechanisms/initiatives in which the previous Plan was integrated and the information integrated.

**Table 14. Current Plan Integration**

Planning Initiative	Current Integration Description
Comprehensive Plan	At the time of this Plan update, the Town’s Comprehensive Plan was undergoing an update. The Comprehensive Plan integrates protection of natural resources for hazard mitigation and provides a guide for regulating land use to protect the public health, safety, and general welfare of its citizens. Potential hazard mitigation improvements through flood protection, habitat conservation, and smart growth principles, among many others, were considered.
Stormwater Management Program	The Town of Marcellus is a Municipal Separate Storm Sewer System (MS4) regulated community with a formal Stormwater Management Program. The Stormwater Management Program specifies requirements to reduce stormwater volume and mitigate stormwater flooding.
Stream Corridor Management Plan	The Town of Marcellus has a Stream Corridor Management Plan, which manages development to mitigate flooding through the New York State Department of Environmental Conservation Stormwater Permit for Construction Activity (SWPP) process.
Ordinances	The Town has multiple local ordinances pertaining to the mitigation of hazards. These ordinances include the establishment of the Planning Board and the Zoning Board of Appeals, Building Ordinance (Chapter 90 of the Town Code), Flood Damage Prevention Ordinance (Chapter 112 of the Town Code), Stormwater Management Ordinance (Chapter 193 of the Town Code), Zoning Ordinance (Chapter 235 of the Town Code), and the Subdivision Regulations (Chapter 205 of the Town Code).
Public Outreach	The Town’s website provides information on safety and hazard mitigation, including local emergency response contact information, current flood risk information, stormwater management, and links to related ordinances and plans.

### 6.2. Potential Future Integration

A hazard mitigation plan must explain how the jurisdiction intends to incorporate this Plan update into planning mechanisms over the next five (5) years. The capability assessment presented in Section 4 of this Annex identifies codes, plans, and programs that provide opportunities for integration. **Table 15** outlines planning mechanisms/initiatives that do not currently integrate the goals and recommendations of this Plan but provide opportunities to do so in the future.



**Table 15. Potential Future Integration**

Planning Initiative	Potential Integration Description
Comprehensive Plan	The hazard mitigation goals could align with the Comprehensive Plan's vision, and hazard risk assessment information could be used to address vulnerabilities.
Stormwater Management Program	The Town will integrate updated standards and guidelines from this Hazard Mitigation Plan (2025 update) into the MS4 process and Stormwater Management Program.
Local Budget	The Town could include a line item for mitigation projects/activities in the municipal budget and/or capital improvement budget.
Ordinances	Updated information on hazard mitigation could be incorporated into future updates of the zoning, building, and subdivision ordinances to inform appropriate property use within the Town. Portions of this Hazard Mitigation Plan should be reviewed to consider any future improvements to the codes, if applicable.
Public Outreach	The Town could expand the information available on the Town's website to include material on the hazards outlined in this Hazard Mitigation Plan, as well as information on climate change impacts to those hazards. Furthermore, the Town could develop community outreach programs.

The Town's Local Planning Team will identify all relevant planning initiatives scheduled for update in the next year and during the annual update process of the Hazard Mitigation Plan. Additionally, the Local Planning Team will identify opportunities to integrate key elements of the Hazard Mitigation Plan, specifically relevant strategies, into the planning initiatives. Mitigation actions were identified to promote plan integration in future revisions of this Plan.

## 7. SIGNIFICANT HAZARD PAST EVENTS

A complete risk assessment, including past incidents, for each identified hazard of concern, can be found in **Volume 1** of this Plan. A summary of past events is provided under each hazard profile and includes a chronology of events that have affected the County and its municipalities. **Table 16** provides information on significant hazard events that uniquely impacted the Town of Marcellus.

**Table 16. Hazard Event History**

Date	Event Type <i>(Disaster Declaration, if applicable)</i>	Description
July 1, 2017	Flood	A tropical moisture laden air mass produced numerous showers and thunderstorms which traveled repeatedly over the same areas of the Finger Lakes Region and Upper Mohawk Valley. Widespread flash and urban flooding developed in portions of Cayuga, Onondaga, Madison, and Oneida counties. The hardest hit areas were the villages and towns of Moravia, Chittenango, Oneida, and Utica. Total rainfall amounts along a narrow corridor from Moravia to Utica generally ranged from 2.5 to five (5) inches, most of which fell in less than two (2) hours. Total damages from this event range between \$10 and \$15 Million countywide. Although the Town did not report any losses, the water conveyance system (owned by the State) was damaged.
June 30 – July 1, 2015	Flood	An unseasonably strong storm system tapping into above normal moisture sources across the Great Lakes and northeast, triggered multiple thunderstorms that produced heavy rainfall across the region. Localized torrential rainfall in central New York caused severe urban flash flooding in the Syracuse metropolitan area. The Town reported damage to the culverts on Pleasant Valley Road.



Date	Event Type <i>(Disaster Declaration, if applicable)</i>	Description
April 25, 2011	Flood, Severe Weather (DR-1193)	A slow moving warm front moved northward across central New York late in the afternoon on April 25 <sup>th</sup> , producing severe weather in the region. There were reports of severe thunderstorms with strong winds/damaging winds, hail, and tornadoes. Additionally, these storms produced heavy rainfall, resulting in flash flooding in several locations across central New York. A walking bridge in Marcellus Park was damaged, trees throughout the Town were damaged, and a number of ditches needed repair due to erosion.

## 8. HAZARD VULNERABILITY AND IMPACT ASSESSMENT

Exposure and vulnerability to certain hazards affect the entire County, and others are geographically defined. Although the entire County may be vulnerable to these hazards, their impacts may vary based on existing community conditions (e.g., underserved populations or those with access and functional needs may be more susceptible under certain conditions).

Table 17 outlines the *unique vulnerabilities and impacts* for the Town of Marcellus and addresses only the hazards relevant to the jurisdiction. A complete risk assessment for each identified hazard of concern is in **Volume 1** of this Plan. Hazard mapping can be found in **Appendix A** of this Annex.

**Table 17. Hazard Vulnerability and Impact Assessment**

Hazard	Vulnerabilities and Impacts
<b>Drought</b>	The Local Planning Team determined that the Town does not have unique vulnerabilities and impacts to drought; rather, the jurisdiction’s vulnerability and impacts are consistent with those experienced throughout the County.
<b>Earthquake</b>	The Local Planning Team determined that the Town does not have unique vulnerabilities and impacts to earthquake events; rather, the jurisdiction’s vulnerability and impacts are consistent with those experienced throughout the County.
<b>Heat Wave/Extreme Heat</b>	The Local Planning Team determined that the Town does not have unique vulnerabilities and impacts to heat wave/extreme heat events; rather, the jurisdiction’s vulnerability and impacts are consistent with those experienced throughout the County.
<b>Flood</b> <i>(riverine, flash/urban, ice jam, dam and levee failure)</i>	Lathrop Drive Development: A Town-owned road with a history of flooding due to agricultural point source discharge. This area has an outdated drainage study and lacks a drainage district.  Pleasant Valley Road: A County-owned road with a history of flooding due to an outdated drainage study and inadequate stormwater controls adjacent to a Town subdivision, which does not have a drainage district.
<b>Geological Hazards</b> <i>(landslides, land subsidence, mudboils)</i>	The Local Planning Team determined that the Town does not have unique vulnerabilities and impacts to geological hazards; rather, the jurisdiction’s vulnerability and impacts are consistent with those experienced throughout the County.
<b>Harmful Algal Bloom</b>	The northern region of Otisco Lake has steep slopes, including agricultural point-source discharges and private septic systems, which can cause runoff into the body of water, increasing the likelihood of harmful algal blooms in the Lake.



Hazard	Vulnerabilities and Impacts
<b>Invasive Species and Infestation</b> <i>(Emerald Ash Borer, Hemlock Woolly Adelgid, True Armyworm, Common Reed (Phragmites), Eurasian Watermilfoil, Water Chestnut, Tick-Borne Diseases, Mosquito-Borne Diseases)</i>	The Town of Marcellus Park (County park) and the Baltimore Woods Nature Center have a significant amount of ash trees, which are highly vulnerable to the emerald ash borer (EAB). The EAB kills the ash trees, impacting the Town’s tree canopy.
<b>Severe Weather</b> <i>(severe thunderstorms – hail, strong winds/damaging winds, tornadoes, hurricane/tropical storm)</i>	The Local Planning Team determined that the Town does not have unique vulnerabilities and impacts to severe weather; rather, the jurisdiction’s vulnerability and impacts are consistent with those experienced throughout the County.
<b>Winter Weather</b> <i>(blizzards, heavy snow, ice storms, cold wave/extreme cold, nor’easter)</i>	The Local Planning Team determined that the Town does not have unique vulnerabilities and impacts to winter weather; rather, the jurisdiction’s vulnerability and impacts are consistent with those experienced throughout the County.
<b>Wildfire</b> <i>(wildfire smoke)</i>	The Local Planning Team determined that the Town does not have unique vulnerabilities and impacts to wildfire; rather, the jurisdiction’s vulnerability and impacts are consistent with those experienced throughout the County.

The Town evaluated whether vulnerability in hazard-prone areas had increased, decreased, or remained the same for each natural hazard identified in this Hazard Mitigation Plan. Climate change, changes in population, infrastructure expansion, and economic shifts that can affect vulnerability were considered. For example, if planned development is in an identified hazard area or is not built to the updated building codes, it may increase the community’s vulnerability to future hazards and disasters. On the other hand, if development occurred with mitigation practices in place, the vulnerability may have remained the same or decreased. Additionally, shifting demographics (e.g., underserved population) were taken into consideration.

**Table 18** outlines whether climate change has increased or decreased the Town’s vulnerability (i.e., exposure) and impact to each natural hazard over the past five (5) years, and the effect of climate change on the future probability of occurrence and impacts from each natural hazard.

**Table 18. Climate Change Current and Future Vulnerability and Impact**

Hazard	Vulnerability and Impact
<b><i>Current Vulnerability and Impact</i></b>	
Drought	Increased
Earthquake	Remained the Same
Heat Wave/Extreme Heat	Increased
Flood <i>(riverine, flash/urban, ice jam, dam and levee failure)</i>	Increased
Geological Hazards <i>(landslides, land subsidence, mudboils)</i>	Remained the Same
Harmful Algal Bloom	Increased
Invasive Species and Infestation <i>(Emerald Ash Borer, Hemlock Woolly Adelgid, True Armyworm, Common Reed (Phragmites), Eurasian Watermilfoil, Water Chestnut, Tick-Borne Diseases, Mosquito-Borne Diseases)</i>	Increased
Severe Weather <i>(severe thunderstorms – hail, strong winds/damaging winds, tornadoes, hurricane/tropical storm)</i>	Increased
Winter Weather <i>(blizzards, heavy snow, ice storms, cold wave/extreme cold, nor’easter)</i>	Decreased
Wildfire <i>(wildfire smoke)</i>	Remained the Same
<b><i>Future Vulnerability and Impact</i></b>	
Drought	Increase
Earthquake	No Change Anticipated



Hazard	Vulnerability and Impact
Heat Wave/Extreme Heat	Increase
Flood ( <i>riverine, flash/urban, ice jam, dam and levee failure</i> )	Increase
Geological Hazards ( <i>landslides, land subsidence, mudboils</i> )	No Change Anticipated
Harmful Algal Bloom	Increase
Invasive Species and Infestation ( <i>Emerald Ash Borer, Hemlock Woolly Adelgid, True Armyworm, Common Reed (Phragmites), Eurasian Watermilfoil, Water Chestnut, Tick-Borne Diseases, Mosquito-Borne Diseases</i> )	Increase
Severe Weather ( <i>severe thunderstorms – hail, strong winds/damaging winds, tornadoes, hurricane/tropical storm</i> )	Increase
Winter Weather ( <i>blizzards, heavy snow, ice storms, cold wave/extreme cold, nor'easter</i> )	Decrease
Wildfire ( <i>wildfire smoke</i> )	No Change Anticipated

Table 19 outlines whether changes in population within the Town over the past five (5) years have increased or decreased the vulnerability (i.e., exposure) and impact to these natural hazards, and the anticipated effects changes in population may have on the future probability of occurrence and impacts from these natural hazards.

**Table 19. Changes in Population Current and Future Vulnerability and Impact**

Hazard	Vulnerability and Impact
<b><i>Current Vulnerability and Impact</i></b>	
Drought	Remained the Same
Earthquake	Remained the Same
Heat Wave/Extreme Heat	Remained the Same
Flood ( <i>riverine, flash/urban, ice jam, dam and levee failure</i> )	Remained the Same
Geological Hazards ( <i>landslides, land subsidence, mudboils</i> )	Remained the Same
Harmful Algal Bloom	Increased
Invasive Species and Infestation ( <i>Emerald Ash Borer, Hemlock Woolly Adelgid, True Armyworm, Common Reed (Phragmites), Eurasian Watermilfoil, Water Chestnut, Tick-Borne Diseases, Mosquito-Borne Diseases</i> )	Remained the Same
Severe Weather ( <i>severe thunderstorms – hail, strong winds/damaging winds, tornadoes, hurricane/tropical storm</i> )	Remained the Same
Winter Weather ( <i>blizzards, heavy snow, ice storms, cold wave/extreme cold, nor'easter</i> )	Remained the Same
Wildfire ( <i>wildfire smoke</i> )	Remained the Same
<b><i>Future Vulnerability and Impact</i></b>	
Drought	No Change Anticipated
Earthquake	No Change Anticipated
Heat Wave/Extreme Heat	No Change Anticipated
Flood ( <i>riverine, flash/urban, ice jam, dam and levee failure</i> )	No Change Anticipated
Geological Hazards ( <i>landslides, land subsidence, mudboils</i> )	No Change Anticipated
Harmful Algal Bloom	Increase
Invasive Species and Infestation ( <i>Emerald Ash Borer, Hemlock Woolly Adelgid, True Armyworm, Common Reed (Phragmites), Eurasian Watermilfoil, Water Chestnut, Tick-Borne Diseases, Mosquito-Borne Diseases</i> )	No Change Anticipated
Severe Weather ( <i>severe thunderstorms – hail, strong winds/damaging winds, tornadoes, hurricane/tropical storm</i> )	No Change Anticipated



Hazard	Vulnerability and Impact
Winter Weather ( <i>blizzards, heavy snow, ice storms, cold wave/extreme cold, nor'easter</i> )	No Change Anticipated
Wildfire ( <i>wildfire smoke</i> )	No Change Anticipated

**Table 20** outlines whether development over the past five (5) years has increased or decreased the Town’s vulnerability (i.e., exposure) and impact to these natural hazards, and the anticipated effects changes in development may have on the future probability of occurrence and impacts from these natural hazards.

**Table 20. Changes in Development Current and Future Vulnerability and Impact**

Hazard	Vulnerability and Impact
<b>Current Vulnerability and Impact</b>	
Drought	Remained the Same
Earthquake	Remained the Same
Heat Wave/Extreme Heat	Remained the Same
Flood ( <i>riverine, flash/urban, ice jam, dam and levee failure</i> )	Decreased
Geological Hazards ( <i>landslides, land subsidence, mudboils</i> )	Remained the same
Harmful Algal Bloom	Decreased
Invasive Species and Infestation ( <i>Emerald Ash Borer, Hemlock Woolly Adelgid, True Armyworm, Common Reed (Phragmites), Eurasian Watermilfoil, Water Chestnut, Tick-Borne Diseases, Mosquito-Borne Diseases</i> )	Remained the Same
Severe Weather ( <i>severe thunderstorms – hail, strong winds/damaging winds, tornadoes, hurricane/tropical storm</i> )	Remained the Same
Winter Weather ( <i>blizzards, heavy snow, ice storms, cold wave/extreme cold, nor'easter</i> )	Remained the Same
Wildfire ( <i>wildfire smoke</i> )	Remained the Same
<b>Future Vulnerability and Impact</b>	
Drought	No Change Anticipated
Earthquake	No Change Anticipated
Heat Wave/Extreme Heat	No Change Anticipated
Flood ( <i>riverine, flash/urban, ice jam, dam and levee failure</i> )	Decrease
Geological Hazards ( <i>landslides, land subsidence, mudboils</i> )	No Change Anticipated
Harmful Algal Bloom	Increase
Invasive Species and Infestation ( <i>Emerald Ash Borer, Hemlock Woolly Adelgid, True Armyworm, Common Reed (Phragmites), Eurasian Watermilfoil, Water Chestnut, Tick-Borne Diseases, Mosquito-Borne Diseases</i> )	No Change Anticipated
Severe Weather ( <i>severe thunderstorms – hail, strong winds/damaging winds, tornadoes, hurricane/tropical storm</i> )	No Change Anticipated
Winter Weather ( <i>blizzards, heavy snow, ice storms, cold wave/extreme cold, nor'easter</i> )	No Change Anticipated
Wildfire ( <i>wildfire smoke</i> )	No Change Anticipated

### 8.1. Future Major Assets

Community assets should include anything that is important to a community's character and function. Assets include people (i.e., underserved population); structures (i.e., new and existing buildings); community lifelines and other critical facilities; natural, historic, and cultural resources; and the economy and other activities that have value to



the community. Although all assets may be affected by the hazards identified in this Hazard Mitigation Plan, the jurisdiction has identified future major assets that may be more vulnerable and impacted by these hazards.

- The Town anticipates that an aging population, critical facilities (e.g., water authority, firefighting facilities, transportation infrastructure), nature centers, and farming may be exposed or vulnerable to any of the natural hazards identified in this Hazard Mitigation Plan. However, any future major assets within the Town may be most vulnerable to flooding and harmful algal blooms.
- Any new assets (e.g., new construction in hazard-prone areas) will be constructed to adhere to the latest building codes and standards, and mitigation to protect them from identified and anticipated hazards, especially those that are expected to increase due to climate change.

## 9. CRITICAL FACILITIES FLOOD RISK

New York State Department of Environmental Conservation (NYSDEC) Title 6, Chapter V, Subchapter A, Part 502 sets forth local floodplain management criteria for State projects located within flood hazard areas. The law states that no such projects related to critical facilities shall be undertaken in a Special Flood Hazard Area (SFHA) unless built in accordance with certain mitigation specifications, including being raised two (2) feet above the Base Flood Elevation (BFE).<sup>7</sup> While all vulnerabilities should be assessed and documented, the State places a high priority on exposure to flooding.

Jurisdictions must identify all critical facilities, assess their vulnerabilities, and ensure they are protected against a 0.2% chance (500-year) flood event. Critical facilities that are located in an SFHA and/or have been previously flooded must be protected against a repeat of that flood or the 0.2% chance flood event, whichever provides the greater protection. The Plan must document that those critical facilities are protected to a 0.2% flood event, or the previous worst-case flood event. For those that do not meet this level of protection, the Plan must include a mitigation action that meets or exceeds this criterion, or explain why it is not feasible to do so.<sup>8</sup>

Table 21 identifies critical facilities in the community located in the 100-year and 500-year floodplain.

**Table 21. Potential Flood Losses to Critical Facilities**

Name	Address	Type	Exposure		Potential Loss from 100-Year Flood Event		Facility Protected	Addressed by Proposed Action
			100-Year	500-Year	% Structure Damage	% Content Damage		
Otisco Lake Dam	2785 Otisco Valley Road Marietta, NY 13110	Dam	X	X	-	-	No	TMR-9
Otisco Lake Pump Station <i>(owned by the Onondaga County Water Authority)</i>	2785 Otisco Valley Road Marietta, NY 13110	Water Pump Station	X	X	-	-	No	TMR-10

## 10. HAZARD RISK RANKING

Table 22 presents the local hazard ranking for the Town of Marcellus of all hazards of concern listed in Volume 1 of this Plan. This ranking summarizes how hazards vary for this jurisdiction. As thoroughly described in Volume 1

<sup>7</sup> New York State Department of Environmental Conservation. (n.d.). Chapter V – Resource Management Services. Retrieved from <https://dec.ny.gov/regulatory/regulations/chapter-v>.

<sup>8</sup> New York State Division of Homeland Security and Emergency Services. (2022). 2022 New York State Hazard Mitigation Planning Standards. Retrieved from <https://www.dhSES.ny.gov/system/files/documents/2023/11/2022-nys-mitigation-planning-standards-final.pdf>



of this Plan, the ranking process involves an assessment of the likelihood of occurrence for each hazard, along with its potential impacts on people, property, and the economy. For further details on how the probability, extent, vulnerability, and impact factors in **Table 22** were calculated, please refer to Section 4.3 in **Volume 1** of this Plan.

It is important to note that the sub hazards for severe weather (i.e., strong winds/damaging winds, severe thunderstorms, tropical storm/hurricane, hail, and tornado), geological hazards (i.e., landslide, land subsidence, and mudboils), flood (i.e., riverine/creek flooding and ice jam, and urban/flash flooding), and winter weather (i.e., blizzards, lake effect snow, nor’easter, and ice storm, and cold wave/extreme cold) were individually ranked in the hazard risk ranking; however, severe weather, geological hazards, flood, and winter weather are each considered as the main hazard throughout this Annex and **Volume 1**.

**Table 22. Town of Marcellus Hazard Risk Ranking**

Hazard Event	Probability Factor	Sum of Weighted Extent Factors	Sum of Weighted Vulnerability Factors	Sum of Weighted Impact Factors	Consequence Score	Total Risk Score <i>(Probability x Consequence)</i>
Flood (Urban/Flash Flood)	3	12	11	29	52	73
Winter Weather (Blizzards, Lake Effect Snow, Nor’easter, Ice Storm)	3	12	14	21	47	67
Severe Thunderstorm <i>(Severe Weather)</i>	3	12	16	14	42	61
Strong Winds/ Damaging Winds <i>(Severe Weather)</i>	3	12	11	16	39	57
Cold Wave/Extreme Cold <i>(Winter Weather)</i>	2	12	14	21	47	48
Heat Wave/Extreme Heat	2	9	11	19	39	41
Drought	2	12	12	13	37	39
Invasive Species and Infestation	2	9	6	18	33	35
Tropical Storm/Hurricane <i>(Severe Weather)</i>	1	9	16	24	49	27
Flood (Riverine/Creek, Ice Jam)	1	12	6	29	47	26
Dam and Levee Failure <i>(Flood)</i>	1	12	6	27	45	25
Harmful Algal Bloom	1	9	10	20	39	23
Hail <i>(Severe Weather)</i>	1	6	16	14	36	21
Earthquake	1	6	16	12	34	20
Tornado <i>(Severe Weather)</i>	1	6	6	22	34	20



Hazard Event	Probability Factor	Sum of Weighted Extent Factors	Sum of Weighted Vulnerability Factors	Sum of Weighted Impact Factors	Consequence Score	Total Risk Score <i>(Probability x Consequence)</i>
Landslide <i>(Geological Hazards)</i>	1	3	6	12	21	13
Land Subsidence <i>(Geological Hazards)</i>	1	3	6	12	21	13
Mudboils <i>(Geological Hazards)</i>	1	3	6	12	21	13
Wildfire <i>(Wildfire Smoke)</i>	1	3	6	11	20	13

**Consequence:** Sum of all weighted factors.  
**Extent:** Sum of the weighted Extent factors.  
**Vulnerability:** Sum of the weighted Vulnerability factors.

**Impact:** Sum of the weighted Impact factors.  
**Total Risk Score\*** = Probability x Consequence  
 \* Normalized to 100

**Total Risk Score Legend**

Classification	Probability Factor	Extent	Vulnerability	Impact	Consequence Score	Total Risk Score
Low (L)	1	0 – 6	0 – 6	0 – 12	0 – 24	0 – 24
Medium (M)	2	7 – 12	7 – 12	13 – 26	25 – 50	25 – 54
High (H)	3	13 – 18	13 – 18	27 – 39	51 – 75	55 and above

The **Legend**—specifically the assignment of low, medium, and high—provides an additional means to qualitatively assess the probability factor, sum of weighted factors, and the total risk scores for each hazard. The **Consequence Score** represents the sum of the Extent, Vulnerability, and Impact Factors. The **Total Risk Score** is a measure of Probability and Consequence.



## 11. MITIGATION ACTIONS

This section includes the mitigation actions developed to address the risks and vulnerabilities to the hazards identified in this Plan. This Plan serves only to recommend mitigation measures based on the potential for risk reduction and available funding. Implementation of mitigation actions is dependent on risk reduction priorities, feasibility, and available funding. It is also dependent on the cooperation and support of the jurisdiction and/or department responsible for each action item. Additionally, all mitigation actions identified in the 2019 update or before were updated accordingly. Any new mitigation actions are listed as *New* (under Project Status).

The Town of Marcellus agreed on **16** mitigation actions that apply to the jurisdiction’s properties for which it has jurisdictional responsibility and authority. A summary of the Town’s mitigation actions status is listed in **Table 23**.

**Note:** The mitigation actions outlined in this Plan are designed only to address those natural hazards that received a risk ranking of *medium* or *high* during the hazard risk assessment (**Table 22**). Hazards that ranked *low* (earthquakes, geological hazards, and wildfires) may not have specific mitigation actions detailed in this document.

**Table 23. Town of Marcellus Mitigation Action Summary**

Status		Mitigation Action Total	
Continuous		6	
In Progress/Not Yet Completed		0	
No Progress/Not Yet Started		5	
New		5	
<b>TOTAL</b>		<b>16</b>	
Complete		0	
Discontinued		0	
Mitigation Actions per Hazard			
Drought	5	Harmful Algal Bloom	4
Earthquake	N/A	Invasive Species and Infestation <i>(Emerald Ash Borer, Hemlock Woolly Adelgid, True Armyworm, Common Reed (Phragmites), Eurasian Watermilfoil, Water Chestnut, Tick-Borne Diseases, Mosquito-Borne Diseases)</i>	4
Heat Wave/Extreme Heat	5	Severe Weather <i>(severe thunderstorms – hail, strong winds/damaging winds, tornadoes, hurricane/tropical storm, nor’easter)</i>	9
Flood <i>(riverine, flash/urban, ice jam, dam, and levee failure)</i>	12	Winter Weather <i>(blizzards, heavy snow, ice storms, cold wave/extreme cold)</i>	6
Geological Hazards <i>(landslides, land subsidence, mudboils)</i>	2	Wildfire <i>(wildfire smoke)</i>	1

A detailed explanation of the Mitigation Strategy can be found in Section 5 of **Volume 1**.



<b>Mitigation Action</b>	<p>Conduct and facilitate community and public education and outreach for residents and businesses to include, but not limited to, the following, to promote and effect natural hazard risk reduction:</p> <ul style="list-style-type: none"> <li>• Provide and maintain links to the Onondaga County Hazard Mitigation Plan website, and regularly post notices on the municipal homepage referencing the Onondaga County Hazard Mitigation Plan webpages.</li> <li>• Prepare and distribute informational letters to flood vulnerable property owners and neighborhood associations, explaining the availability of mitigation grant funding to mitigate their properties, and instructing them on how they can learn more and implement mitigation.</li> <li>• Use the Town’s e-mail notification systems and newsletters to educate the public on flood insurance better, the availability of mitigation grant funding, and personal natural hazard risk reduction measures.</li> <li>• Work with neighborhood associations, civic and business groups to disseminate information on flood insurance and the availability of mitigation grant funding.</li> </ul>				
	<b>Action Number</b>	TMR-1	<b>Goal(s) Addressed</b>	1, 2, 3, 4, 5, 6	<b>Prioritization Score</b>
<b>Year Added to Plan</b>	2013	<b>Timeline</b> <i>(estimated)</i>	Ongoing	<b>Implementation Priority</b>	High
<b>Hazard(s) Mitigated</b>		Drought, Heat Wave/Extreme Heat, Flood, Harmful Algal Bloom, Invasive Species and Infestation, Severe Weather, Winter Weather			
<b>Project Status</b>		Continuous	If <i>Discontinued</i> , provide reason.	N/A	
<b>Benefits</b> <i>(Loss Avoided)</i>		Low			
<b>Lead Agency / Organization</b>	Town of Marcellus Code Enforcement Office		<b>Supporting Agency / Organization</b> <i>(If applicable)</i>	Onondaga County Department of Planning, Onondaga County Department of Emergency Management	
<b>Additional Participating Jurisdictions</b> <i>(If applicable)</i>	N/A				
<b>Estimated Cost</b>	Low	<b>Potential Funding Source</b>	General Fund (Staff Time)		
<b>Critical Facility</b> <i>(Critical Facility located in 1% floodplain?)</i>	No	<b>Additional Details</b> <i>(optional)</i>			



<b>Mitigation Action</b>	Actively support and participate in the implementation, monitoring, maintenance, and updating of this Hazard Mitigation Plan, as outlined and defined in Volume 1.				
<b>Action Number</b>	TMR-2	<b>Goal(s) Addressed</b>	1, 2, 3, 4, 5, 6	<b>Prioritization Score</b>	15/15
<b>Year Added to Plan</b>	2013	<b>Timeline (estimated)</b>	Ongoing	<b>Implementation Priority</b>	High
<b>Hazard(s) Mitigated</b>	Drought, Heat Wave/Extreme Heat, Flood, Harmful Algal Bloom, Invasive Species and Infestation, Severe Weather, Winter Weather				
<b>Project Status</b>	Continuous	If <i>Discontinued</i> , provide reason.		N/A	
<b>Benefits (Loss Avoided)</b>	High				
<b>Lead Agency / Organization</b>	Town of Marcellus Code Enforcement Office, Town of Marcellus Town Board	<b>Supporting Agency / Organization (If applicable)</b>		N/A	
<b>Additional Participating Jurisdictions (If applicable)</b>	N/A				
<b>Estimated Cost</b>	Low	<b>Potential Funding Source</b>	General Fund (Staff Time)		
<b>Critical Facility (Critical Facility located in 1% floodplain?)</b>	No	<b>Additional Details (optional)</b>			



<b>Mitigation Action</b>	<p>Continue to maintain good standing and compliance under the National Flood Insurance Program (NFIP) through implementation and enforcement of floodplain management requirements that, at a minimum, meet the NFIP requirements. These include:</p> <ul style="list-style-type: none"> <li>• Enforce the flood damage prevention ordinance (e.g., regulating all new and substantially improved construction in Special Hazard Flood Areas).</li> <li>• Participate in floodplain identification and mapping updates.</li> <li>• Provide public assistance/outreach on floodplain requirements and impacts.</li> </ul>				
<b>Action Number</b>	TMR-3	<b>Goal(s) Addressed</b>	1, 2, 3, 4, 5, 6	<b>Prioritization Score</b>	15/15
<b>Year Added to Plan</b>	2013	<b>Timeline</b> <i>(estimated)</i>	Ongoing	<b>Implementation Priority</b>	High
<b>Hazard(s) Mitigated</b>		Flood, Severe Weather			
<b>Project Status</b>		Continuous	If <i>Discontinued</i> , provide reason.	N/A	
<b>Benefits</b> <i>(Loss Avoided)</i>		Medium			
<b>Lead Agency / Organization</b>		Town of Marcellus Code Enforcement Office (Floodplain Administrator)	<b>Supporting Agency / Organization</b> <i>(If applicable)</i>	N/A	
<b>Additional Participating Jurisdictions</b> <i>(If applicable)</i>		N/A			
<b>Estimated Cost</b>		Low	<b>Potential Funding Source</b>	General Fund (Staff Time)	
<b>Critical Facility</b> <i>(Critical Facility located in 1% floodplain?)</i>		No	<b>Additional Details</b> <i>(optional)</i>		



<b>Mitigation Action</b>	Develop, enhance, and implement the Town's existing emergency plans.				
<b>Action Number</b>	TMR-4	<b>Goal(s) Addressed</b>	5, 6	<b>Prioritization Score</b>	15/15
<b>Year Added to Plan</b>	2013	<b>Timeline</b> <i>(estimated)</i>	Ongoing	<b>Implementation Priority</b>	High
<b>Hazard(s) Mitigated</b>	Drought, Heat Wave/Extreme Heat, Flood, Harmful Algal Bloom, Invasive Species and Infestation, Severe Weather, Winter Weather				
<b>Project Status</b>	No Progress/Not Yet Started	<i>If Discontinued, provide reason.</i>	N/A		
<b>Benefits</b> <i>(Loss Avoided)</i>	High				
<b>Lead Agency / Organization</b>	Town of Marcellus Town Board	<b>Supporting Agency / Organization</b> <i>(If applicable)</i>	N/A		
<b>Additional Participating Jurisdictions</b> <i>(If applicable)</i>	N/A				
<b>Estimated Cost</b>	Low	<b>Potential Funding Source</b>	General Fund (Staff Time)		
<b>Critical Facility</b> <i>(Critical Facility located in 1% floodplain?)</i>	No	<b>Additional Details</b> <i>(optional)</i>			



<b>Mitigation Action</b>	Develop, enhance, and maintain mutual aid agreements with surrounding municipalities and counties.				
<b>Action Number</b>	TMR-5	<b>Goal(s) Addressed</b>	1, 5, 6	<b>Prioritization Score</b>	15/15
<b>Year Added to Plan</b>	2013	<b>Timeline (estimated)</b>	Ongoing	<b>Implementation Priority</b>	High
<b>Hazard(s) Mitigated</b>	Drought, Heat Wave/Extreme Heat, Flood, Harmful Algal Bloom, Invasive Species and Infestation, Severe Weather, Winter Weather				
<b>Project Status</b>	Continuous	If <i>Discontinued</i> , provide reason.		N/A	
<b>Benefits (Loss Avoided)</b>	High				
<b>Lead Agency / Organization</b>	Town of Marcellus Town Board	<b>Supporting Agency / Organization (If applicable)</b>		N/A	
<b>Additional Participating Jurisdictions (If applicable)</b>	N/A				
<b>Estimated Cost</b>	Low	<b>Potential Funding Source</b>	General Fund (Staff Time)		
<b>Critical Facility (Critical Facility located in 1% floodplain?)</b>	No	<b>Additional Details (optional)</b>			



<b>Mitigation Action</b>	Participate in the Stream Team Program offered by the Onondaga County Soil & Water Conservation District to assist in the removal of log jams in flood vulnerable stream sections.				
<b>Action Number</b>	TMR-6	<b>Goal(s) Addressed</b>	1, 2, 4, 5	<b>Prioritization Score</b>	4/15
<b>Year Added to Plan</b>	2013	<b>Timeline (estimated)</b>	4 to 5 Years	<b>Implementation Priority</b>	Low
<b>Hazard(s) Mitigated</b>	Flood				
<b>Project Status</b>	No Progress/Not Yet Started	<i>If Discontinued, provide reason.</i>	N/A		
<b>Benefits (Loss Avoided)</b>	High				
<b>Lead Agency / Organization</b>	Town of Marcellus Highway Department	<b>Supporting Agency / Organization (If applicable)</b>	Onondaga County Soil & Water Conservation District		
<b>Additional Participating Jurisdictions (If applicable)</b>	N/A				
<b>Estimated Cost</b>	High	<b>Potential Funding Source</b>	General Fund (Staff Time)		
<b>Critical Facility (Critical Facility located in 1% floodplain?)</b>	No	<b>Additional Details (optional)</b>			



<b>Mitigation Action</b>	<p>Develop and implement an outreach program to educate farmers on the importance of proper hedgerow maintenance and stormwater management in steep slope areas. The Town will partner with the Onondaga County Soil &amp; Water Conservation District and the New York State Department of Environmental Conservation to provide input and guidance on best management practices for steep slope areas. Outreach should include, but not be limited to, the following information:</p> <ul style="list-style-type: none"> <li>Hedgerows should be maintained and preserved to slow sheet flow down steep slopes and maintain soil stability.</li> <li>Steep slope areas require specific watering techniques as well as stormwater detention.</li> <li>Natural water courses in steep slope areas are easily overwhelmed by oversaturated soils from watering and heavy precipitation.</li> </ul>				
<b>Action Number</b>	TMR-7	<b>Goal(s) Addressed</b>	1, 2, 3, 4, 5	<b>Prioritization Score</b>	11/15
<b>Year Added to Plan</b>	2019	<b>Timeline</b> <i>(estimated)</i>	Ongoing	<b>Implementation Priority</b>	High
<b>Hazard(s) Mitigated</b>		Flood, Geological Hazards			
<b>Project Status</b>		Continuous	If <i>Discontinued</i> , provide reason.	N/A	
<b>Benefits</b> <i>(Loss Avoided)</i>		Low			
<b>Lead Agency / Organization</b>	Town of Marcellus Code Enforcement Office	<b>Supporting Agency / Organization</b> <i>(If applicable)</i>	Onondaga County Soil & Water Conservation District, New York State Department of Environmental Conservation		
<b>Additional Participating Jurisdictions</b> <i>(If applicable)</i>	N/A				
<b>Estimated Cost</b>	Low	<b>Potential Funding Source</b>	General Fund (Staff Time)		
<b>Critical Facility</b> <i>(Critical Facility located in 1% floodplain?)</i>	No	<b>Additional Details</b> <i>(optional)</i>			



<b>Mitigation Action</b>	Support the New York State Open Space Conservation Plan, which includes the following regional priority conservation project:  <i>Camillus Valley/Nine Mile Creek (towns of Camillus, Marcellus, and Geddes): Expansion of recent acquisitions by New York State Department of Environmental Conservation (NYSDEC) and a local land trust help preserve this ecologically sensitive valley that supports a wide diversity of breeding bird and migratory bird species, as well as being the most esteemed and widely used trout stream in Central New York. This project encompasses the Nine Mile Creek Valley, running from Otisco Lake to Onondaga Lake, including enhancing the NYSDEC administered Camillus Forest, the Nine Mile Creek Critical Environmental Area, the Erie Canal Corridor, and the Water Trail in the towns of Camillus and Marcellus, which are under immediate development pressure. The project will buffer important attributes from development and provide public waterway access.</i>				
	<b>Action Number</b>	TMR-8	<b>Goal(s) Addressed</b>	1, 3, 4	<b>Prioritization Score</b>
<b>Year Added to Plan</b>	2019	<b>Timeline (estimated)</b>	Ongoing	<b>Implementation Priority</b>	Medium
<b>Hazard(s) Mitigated</b>		Flood			
<b>Project Status</b>		Continuous	If Discontinued, provide reason.	N/A	
<b>Benefits (Loss Avoided)</b>		Low			
<b>Lead Agency / Organization</b>		Town of Marcellus Code Enforcement Office, New York State Department of Environmental Conservation	<b>Supporting Agency / Organization (If applicable)</b>	N/A	
<b>Additional Participating Jurisdictions (If applicable)</b>		N/A			
<b>Estimated Cost</b>		Low	<b>Potential Funding Source</b>	General Fund (Staff Time)	
<b>Critical Facility (Critical Facility located in 1% floodplain?)</b>		No	<b>Additional Details (optional)</b>		



<b>Mitigation Action</b>	Encourage and support the retrofit of the Otisco Lake Dam (owned by Onondaga County Water Authority) to the 500-year flood level by discussing mitigation options with the facility operator/owner.				
<b>Action Number</b>	TMR-9	<b>Goal(s) Addressed</b>	1, 2, 3	<b>Prioritization Score</b>	3/15
<b>Year Added to Plan</b>	2019	<b>Timeline (estimated)</b>	Over 5 Years	<b>Implementation Priority</b>	Low
<b>Hazard(s) Mitigated</b>	Flood, Severe Weather				
<b>Project Status</b>	No Progress/Not Yet Started	<i>If Discontinued, provide reason.</i>	N/A		
<b>Benefits (Loss Avoided)</b>	Low				
<b>Lead Agency / Organization</b>	Town of Marcellus Code Enforcement Office (Floodplain Administrator)	<b>Supporting Agency / Organization (If applicable)</b>	Onondaga County Water Authority		
<b>Additional Participating Jurisdictions (If applicable)</b>	N/A				
<b>Estimated Cost</b>	Low	<b>Potential Funding Source</b>	General Fund (Staff Time)		
<b>Critical Facility (Critical Facility located in 1% floodplain?)</b>	Yes	<b>Additional Details (optional)</b>	The Town does not have jurisdiction over the facility; therefore, the Town will contact the facility's manager and discuss options for retrofitting the facility.		



<b>Mitigation Action</b>	Encourage and support the retrofit of the Otisco Lake Pump Station (owned by Onondaga County Water Authority) to the 500-year flood level by discussing mitigation options with the facility operator/owner.				
<b>Action Number</b>	TMR-10	<b>Goal(s) Addressed</b>	1, 2, 3	<b>Prioritization Score</b>	3/15
<b>Year Added to Plan</b>	2019	<b>Timeline (estimated)</b>	Over 5 Years	<b>Implementation Priority</b>	Low
<b>Hazard(s) Mitigated</b>	Flood, Severe Weather				
<b>Project Status</b>	No Progress/Not Yet Started	<i>If Discontinued, provide reason.</i>	N/A		
<b>Benefits (Loss Avoided)</b>	Low				
<b>Lead Agency / Organization</b>	Town of Marcellus Code Enforcement Office (Floodplain Administrator)	<b>Supporting Agency / Organization (If applicable)</b>	Onondaga County Water Authority		
<b>Additional Participating Jurisdictions (If applicable)</b>	N/A				
<b>Estimated Cost</b>	Low	<b>Potential Funding Source</b>	General Fund (Staff Time)		
<b>Critical Facility (Critical Facility located in 1% floodplain?)</b>	Yes	<b>Additional Details (optional)</b>	The Town does not have jurisdiction over the facility; therefore, the Town will contact the facility's manager and discuss options for retrofitting the facility.		



<b>Mitigation Action</b>	Conduct drainage studies for each subdivision and implement the recommended actions to mitigate stormwater and erosion issues that can lead to flooding. The Town has four (4) subdivisions – Lathrop Heights, Marcellus Knolls, Aquinnah Heights, and Marcellus Golf Course.				
<b>Action Number</b>	TMR-11	<b>Goal(s) Addressed</b>	1, 2, 3	<b>Prioritization Score</b>	5/15
<b>Year Added to Plan</b>	2019	<b>Timeline (estimated)</b>	Over 5 Years	<b>Implementation Priority</b>	Low
<b>Hazard(s) Mitigated</b>	Flood, Severe Weather				
<b>Project Status</b>	No Progress/Not Yet Started	<i>If Discontinued, provide reason.</i>	N/A		
<b>Benefits (Loss Avoided)</b>	Medium				
<b>Lead Agency / Organization</b>	Town of Marcellus Code Enforcement Office (Floodplain Administrator), Town of Marcellus Town Board	<b>Supporting Agency / Organization (If applicable)</b>	N/A		
<b>Additional Participating Jurisdictions (If applicable)</b>	N/A				
<b>Estimated Cost</b>	High	<b>Potential Funding Source</b>	General Fund (Staff Time), HMGP, FMA		
<b>Critical Facility (Critical Facility located in 1% floodplain?)</b>	No	<b>Additional Details (optional)</b>			



<b>Mitigation Action</b>	Assess drought vulnerability by gathering and analyzing water and climate data to better understand local climate and drought history; identify factors that affect drought severity, identify available water supplies, and determine how droughts have impacted the community's water sources.				
<b>Action Number</b>	TMR-12	<b>Goal(s) Addressed</b>	1, 2, 3, 4, 5, 6	<b>Prioritization Score</b>	1/15
<b>Year Added to Plan</b>	2025	<b>Timeline (estimated)</b>	3 to 5 Years	<b>Implementation Priority</b>	Low
<b>Hazard(s) Mitigated</b>	Drought				
<b>Project Status</b>	New	If <i>Discontinued</i> , provide reason.		N/A	
<b>Benefits (Loss Avoided)</b>	Medium				
<b>Lead Agency / Organization</b>	Town of Marcellus Town Board	<b>Supporting Agency / Organization (If applicable)</b>	N/A		
<b>Additional Participating Jurisdictions (If applicable)</b>	N/A				
<b>Estimated Cost</b>	Low	<b>Potential Funding Source</b>	General Fund (Staff Time), HMGP		
<b>Critical Facility (Critical Facility located in 1% floodplain?)</b>	No	<b>Additional Details (optional)</b>			



<b>Mitigation Action</b>	Update, adopt, and enforce building code provisions to reduce floods, severe weather (e.g., tornadoes, strong winds/damaging winds), and winter weather damage risks.				
<b>Action Number</b>	TMR-13	<b>Goal(s) Addressed</b>	1, 5, 6	<b>Prioritization Score</b>	5/15
<b>Year Added to Plan</b>	2025	<b>Timeline (estimated)</b>	1 to 3 Months	<b>Implementation Priority</b>	Low
<b>Hazard(s) Mitigated</b>	Flood, Severe Weather, Winter Weather				
<b>Project Status</b>	New	If <i>Discontinued</i> , provide reason.		N/A	
<b>Benefits (Loss Avoided)</b>	Low				
<b>Lead Agency / Organization</b>	Town of Marcellus Code Enforcement Office	<b>Supporting Agency / Organization (If applicable)</b>	N/A		
<b>Additional Participating Jurisdictions (If applicable)</b>	N/A				
<b>Estimated Cost</b>	Low	<b>Potential Funding Source</b>	General Fund (Staff Time)		
<b>Critical Facility (Critical Facility located in 1% floodplain?)</b>	No	<b>Additional Details (optional)</b>			



<b>Mitigation Action</b>	Enhance awareness of extreme temperatures by conducting outreach regarding the dangers of extreme heat and cold, and the steps to prepare for these events. Furthermore, outreach will include education for homeowners and builders on how to protect pipes (e.g., locating water pipes inside building insulation, keeping pipes out of attics and crawl spaces, and vulnerable outside walls) during cold waves/extreme cold events.				
<b>Action Number</b>	TMR-14	<b>Goal(s) Addressed</b>	1, 2, 6	<b>Prioritization Score</b>	5/15
<b>Year Added to Plan</b>	2025	<b>Timeline (estimated)</b>	Ongoing	<b>Implementation Priority</b>	Low
<b>Hazard(s) Mitigated</b>	Heat Wave/Extreme Heat, Winter Weather				
<b>Project Status</b>	New	<i>If Discontinued, provide reason.</i>	N/A		
<b>Benefits (Loss Avoided)</b>	Medium				
<b>Lead Agency / Organization</b>	Town of Marcellus Code Enforcement Office	<b>Supporting Agency / Organization (If applicable)</b>	N/A		
<b>Additional Participating Jurisdictions (If applicable)</b>	N/A				
<b>Estimated Cost</b>	Low	<b>Potential Funding Source</b>	General Fund (Staff Time)		
<b>Critical Facility (Critical Facility located in 1% floodplain?)</b>	No	<b>Additional Details (optional)</b>			



<b>Mitigation Action</b>	Assess vulnerability to landslides by studying areas where landslides occur, completing an inventory of locations where critical facilities, other buildings, and infrastructure are vulnerable to landslides, and using GIS to identify and map landslide hazard areas.				
<b>Action Number</b>	TMR-15	<b>Goal(s) Addressed</b>	1, 2, 4	<b>Prioritization Score</b>	13/15
<b>Year Added to Plan</b>	2025	<b>Timeline (estimated)</b>	Over 5 Years	<b>Implementation Priority</b>	High
<b>Hazard(s) Mitigated</b>	Geological Hazards				
<b>Project Status</b>	New	If <i>Discontinued</i> , provide reason.		N/A	
<b>Benefits (Loss Avoided)</b>	Low				
<b>Lead Agency / Organization</b>	Town of Marcellus Code Enforcement Office, Town of Marcellus Planning Board	<b>Supporting Agency / Organization (If applicable)</b>		N/A	
<b>Additional Participating Jurisdictions (If applicable)</b>	N/A				
<b>Estimated Cost</b>	High	<b>Potential Funding Source</b>	General Fund (Staff Time), HMGP		
<b>Critical Facility (Critical Facility located in 1% floodplain?)</b>	No	<b>Additional Details (optional)</b>			



<b>Mitigation Action</b>	Map and assess wildfire vulnerability (i.e., wildfire hazard areas) by using GIS mapping to facilitate analysis and planning decisions through comparison with zoning, land use, development, and infrastructure.				
<b>Action Number</b>	TMR-16	<b>Goal(s) Addressed</b>	1, 2, 4, 6	<b>Prioritization Score</b>	15/15
<b>Year Added to Plan</b>	2025	<b>Timeline (estimated)</b>	Over 5 Years	<b>Implementation Priority</b>	High
<b>Hazard(s) Mitigated</b>	Wildfire				
<b>Project Status</b>	New	If <i>Discontinued</i> , provide reason.		N/A	
<b>Benefits (Loss Avoided)</b>	Low				
<b>Lead Agency / Organization</b>	Town of Marcellus Code Enforcement Office, Town of Marcellus Planning Board	<b>Supporting Agency / Organization (If applicable)</b>		N/A	
<b>Additional Participating Jurisdictions (If applicable)</b>	N/A				
<b>Estimated Cost</b>	High	<b>Potential Funding Source</b>	General Fund (Staff Time), HMGP		
<b>Critical Facility (Critical Facility located in 1% floodplain?)</b>	No	<b>Additional Details (optional)</b>			



## APPENDIX A. HAZARD MAPS

These maps are based on the best available data at the time this Plan was prepared and are considered adequate for planning purposes. Maps have been generated only for hazards that can be distinctly represented using available mapping technologies and data, and for which the Town of Marcellus has significant vulnerability.

- **Figure 1** illustrates the jurisdiction's planning area boundary.
- **Figure 2** illustrates the critical facilities within the planning area.
- **Figure 3** illustrates the jurisdiction's Special Flood Hazard Area (SFHA), including the Flood Zones and the 500-year floodplain in the planning area. Flood Insurance Rate Maps (FIRMs) display flood zones, floodplain boundaries, and Base Flood Elevation (BFE), which are used for floodplain management, flood insurance ratings, and to determine flood insurance requirements. FIRMs show areas with a 1% chance of flooding each year, commonly known as the 100-year floodplains, and are illustrated as the SFHA (Flood Zones A, AE, and AO on the map). The 500-year floodplains show areas with a 0.2% chance of flooding each year.



Figure 1. Town of Marcellus Planning Area

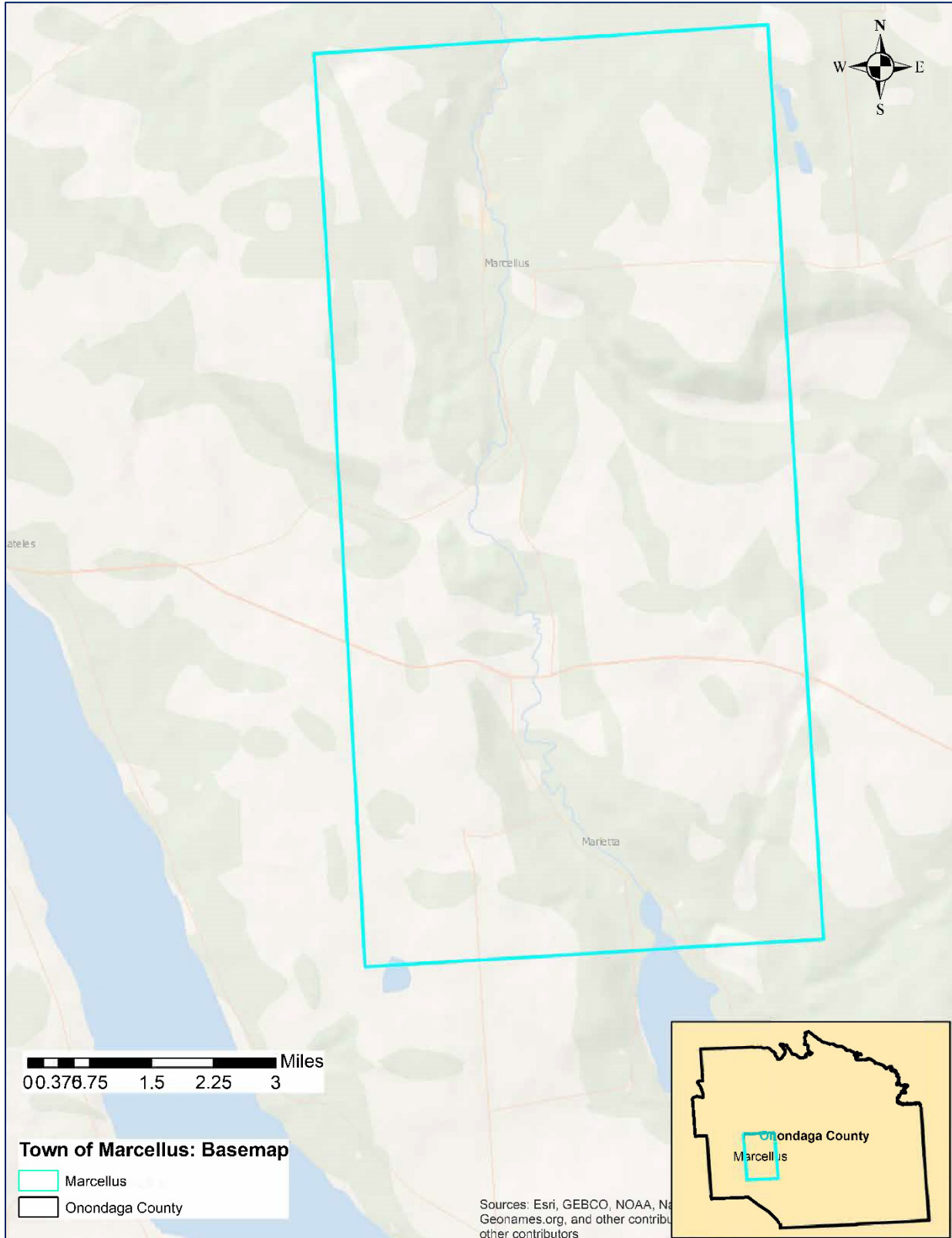




Figure 2. Critical Facilities

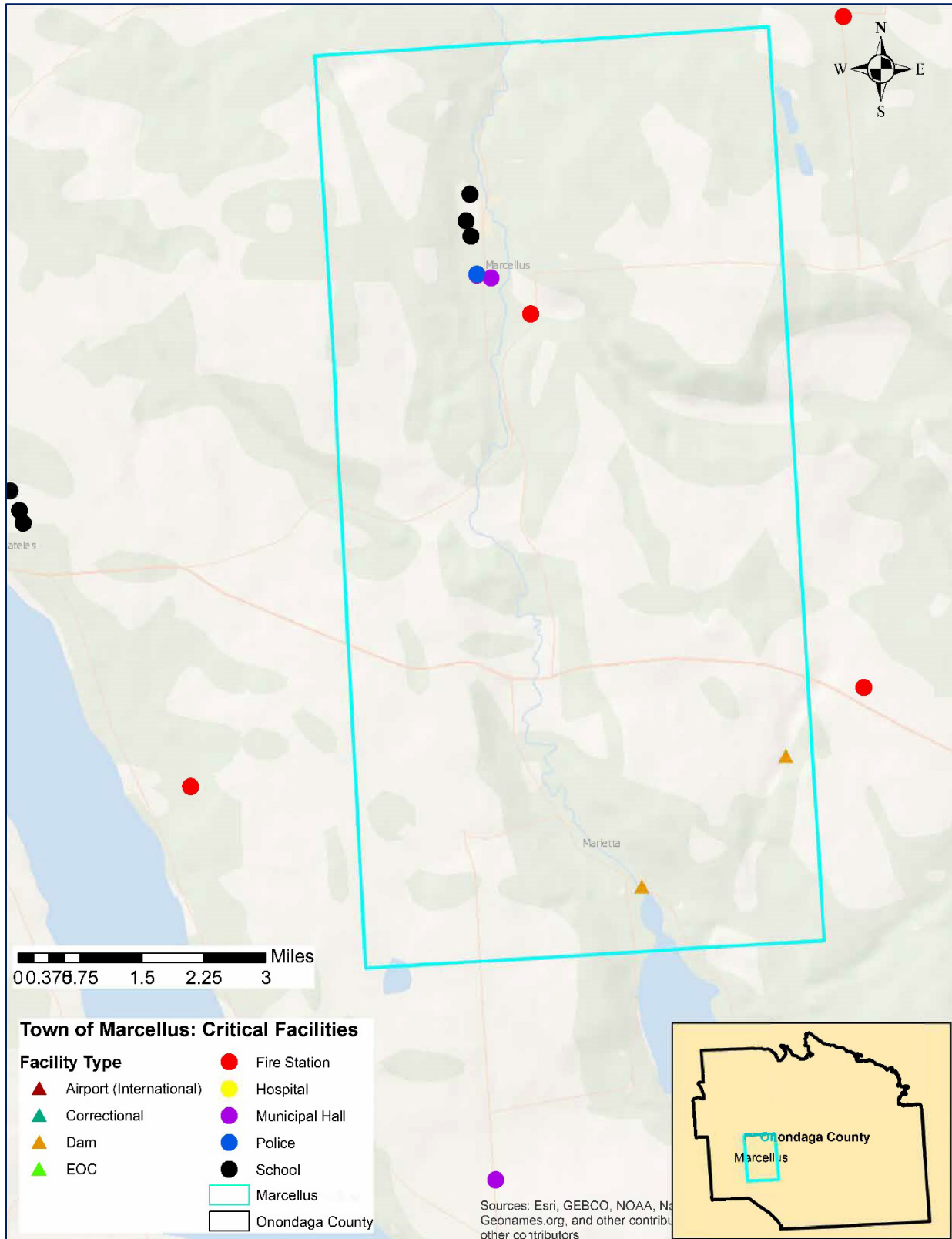
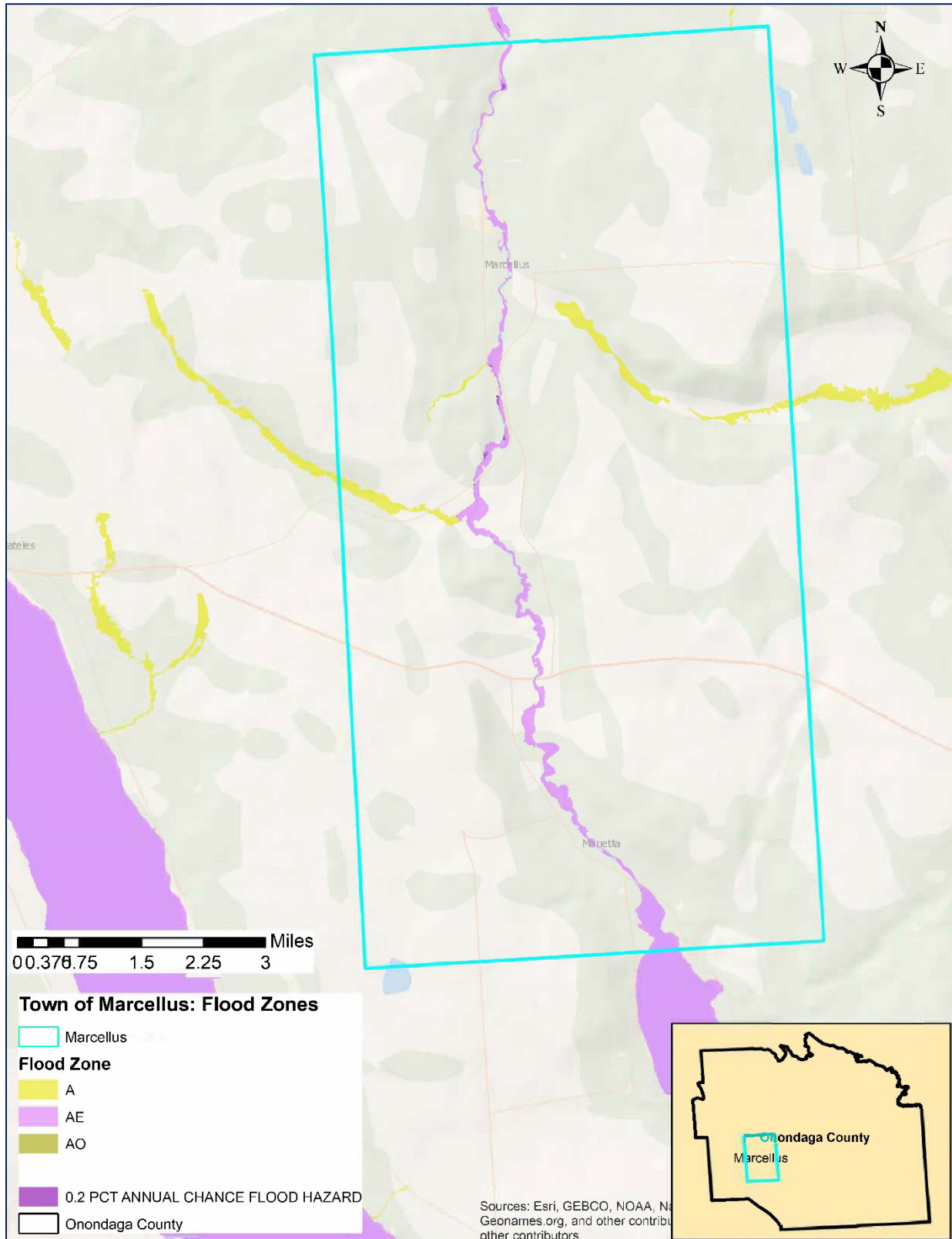




Figure 3. Special Flood Hazard Area





**APPENDIX B. LETTER OF INTENT**

**Statement of Intent to Participate in the  
2024 Onondaga County Multi-Jurisdictional Hazard Mitigation Plan**

The purpose of this letter is to establish commitment from, and a cooperative working relationship between, all participating jurisdictions in the development and implementation of the 2024 Onondaga County Multi-Jurisdictional Hazard Mitigation Plan (HMP). In addition, the intent of this form is to ensure that the Plan update is developed in accordance with Title 44 of the Federal Code of Regulations Part 201.6; that the planning process is conducted in an open manner involving community stakeholders; that it is consistent with each participating jurisdiction's policies, programs, and authorities; and that it is an accurate reflection of the community's values.

To meet this requirement and to help reduce the loss of life and damage to property in the event of a natural disaster, our municipality intends to participate in a federally funded grant initiative to update the 2024 Onondaga County Multi-Jurisdictional Hazard Mitigation Plan.

We understand that the planning process will include a limited number of meetings and/or calls between Planning Team representatives and representatives from participating municipalities and agencies. The subject of the meeting(s) will be to:

- Inform participants on the needs and methods for identifying and prioritizing hazards;
- Share information on hazards affecting local jurisdictions;
- Provide information related to local assets, plans/ordinances, hazard events and damages, new development, etc. within the jurisdiction; and
- Determine possible projects to reduce the impact of future incidents involving hazards which are prerequisites to municipalities later applying for hazard mitigation grant funds.

We recognize the importance of having an updated multi-jurisdictional hazard mitigation plan to help safeguard the lives and property of our citizens and commit to participating in this process with Onondaga County.

**Name of Jurisdiction:** Town of Marcellus

**Name of Authorized Representative:**  
John Houser

**Signature of Authorized Representative:**

**Primary Point-of-Contact (POC):**  
**Name:** John Houser  
**Title:** Codes Officer  
**Department:** Codes Office  
**Phone Number:** 315-673-3269 ext 4  
**Email:** jhouser@marcellusny.com

**Secondary Point-of-Contact (POC):**  
**Name:** Laurie Stevens  
**Title:** Town supervisor  
**Department:** Town Board  
**Phone Number:** 315-685-0264  
**Email:** lstevens@marcellusny.com

Please return this form to [jefferyharrop@ongov.net](mailto:jefferyharrop@ongov.net), or mail to the Onondaga County Dept. of Planning, 335 Montgomery St, Syracuse, NY 13202. Questions, call Jeff at (315)435-2673.



## APPENDIX C. PLAN ADOPTION

*[Placeholder for adoption documentation after State and FEMA Approval]*