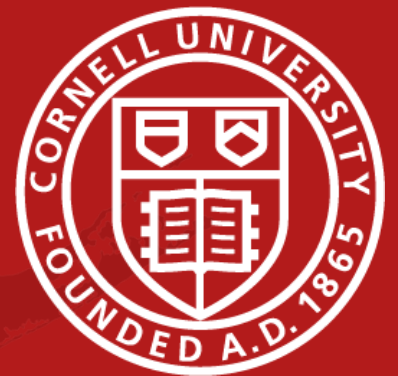


# Cornell Cooperative Extension Onondaga County

Presentation to Legislature  
May 2026

David Skeval, Executive Director



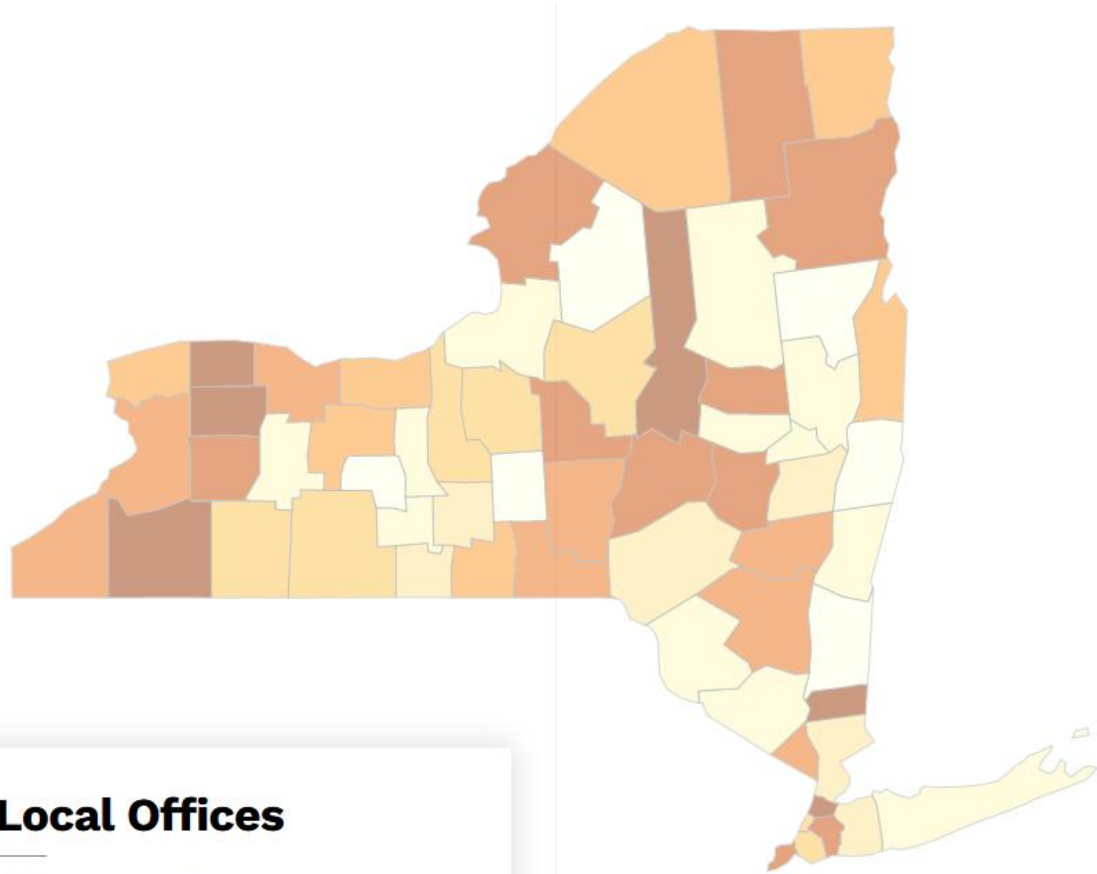
*In Just One Year:*

**34,000+** Direct Participants

**1.6 Million** Reached through Media,  
Materials, & Online

Think of What We've Done since 1913.

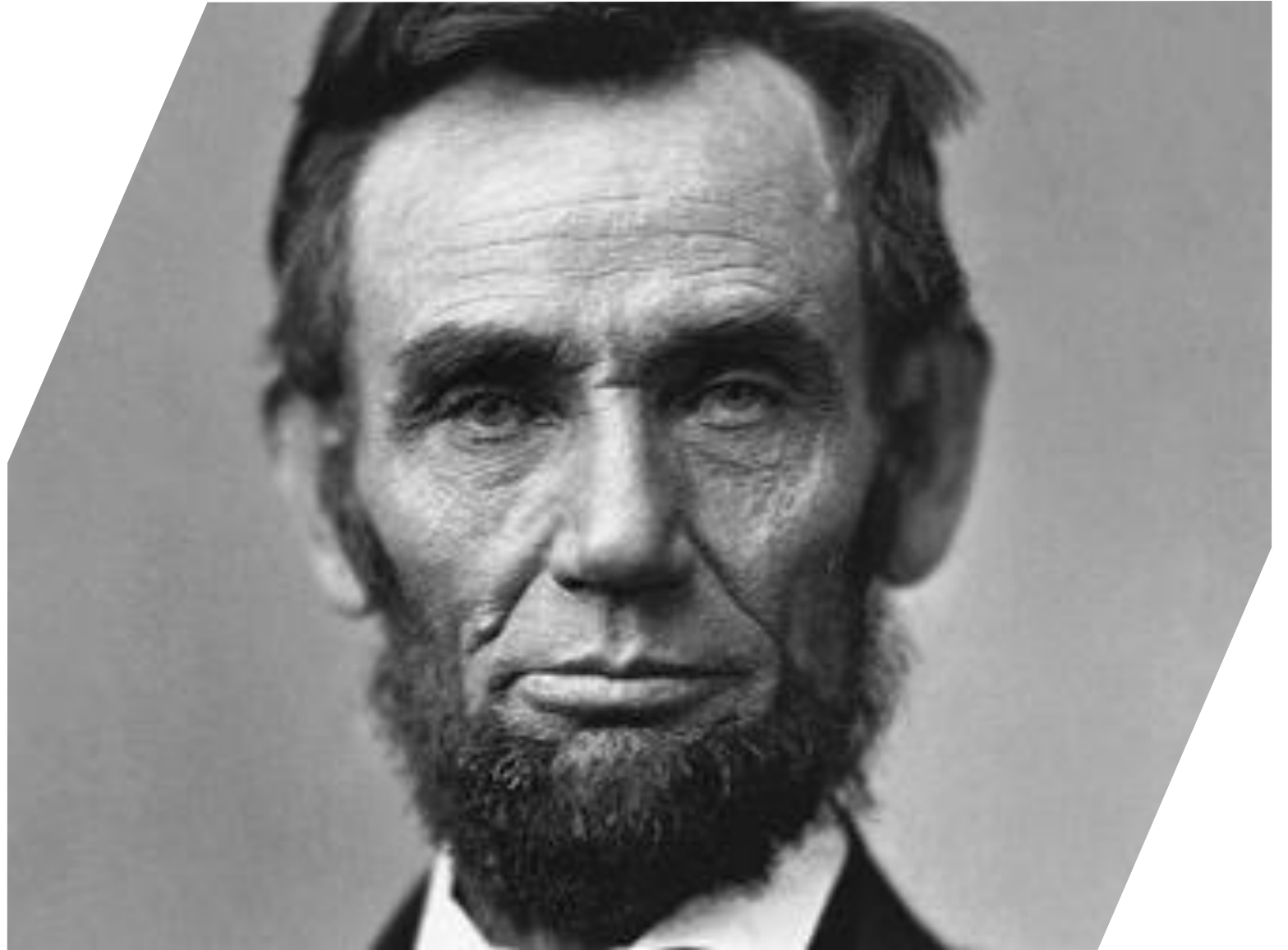
# What Extension in Onondaga County is:



- CCE Onondaga is a **subordinate government agency** as set forth by County Law 224 (state law).
- CCE Onondaga has 501c(3) status with the IRS but **WE are not a “not-for-profit.”**
- **WE are not employed by or receive funding from Cornell University.**
- Locally driven & independent
- A century’s old national system & the backbone of American community education ever since
- Enduring, resilient, trusted, accessible.

# The Land Grant System

Democratizing  
Education



# The Birth of Extension

Taking research off the shelf



**Cornell Cooperative Extension**

# **An Introduction to *Putting Knowledge to Work:***

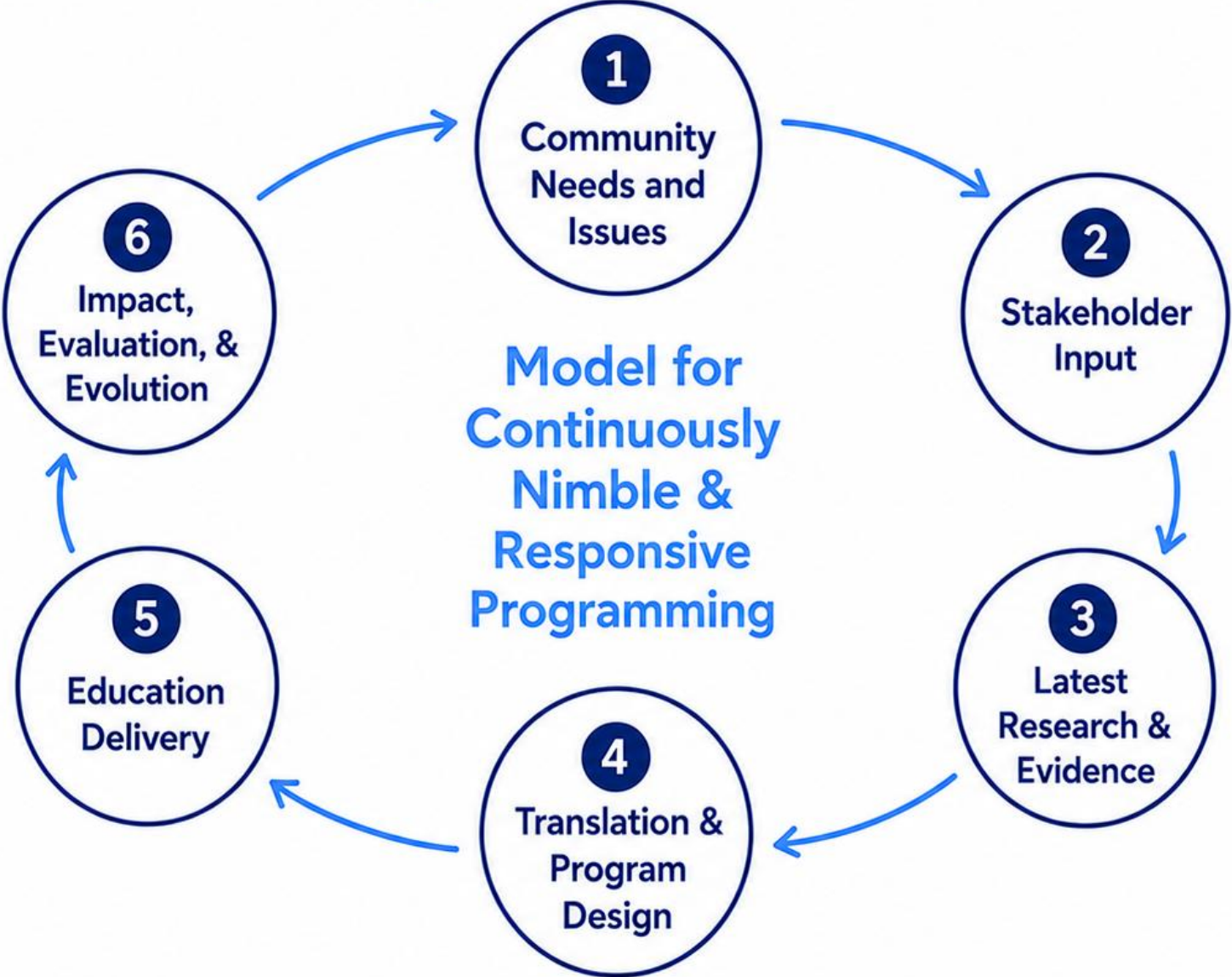
---

## **Our Mission:**

Our job is to EXTEND  
the knowledge from our  
Land Grant Universities  
to all residents in  
Onondaga County.



# From Community Needs to Educational Impact





## **4-H YOUTH AND FAMILY DEVELOPMENT**



## **AGRICULTURE & FOOD SYSTEMS**



## **NATURAL RESOURCES**



## **HEALTH & NUTRITION**

# Natural Resources & Environment

## Programming Connections to County Departments

Environmental/Natural Resources	County Department	External Partnering Organizations
Tick/Lyme/Deer	Office of the Environment, WEP, Health Dept	Cornell, Univ of RI
Tick Identification	WEP, Office of the Environment	Upstate, Cornell
Water Quality	WEP, Office of the Environment	City of Syracuse
Stream Studies	Office of the Environment, WEP	Cornell
Master Forest Owners (rural)	WEP, Office of the Environment	Cornell, NYFOA
CommuniTree Stewards	WEP, Office of the Environment	Municipalities, NYS DEC
Community Tree Buy	WEP, Office of the Environment	Cornell
Hazard Tree Training	County Parks, Brian Kelly	
Arborists Certificate Training	WEP, Office of the Environment	ISA
Tick Research	WEP, Office of the Environment	Cornell, Univ of RI
Arthropod borne disease	WEP, Office of the Environment	
Insect Identification	WEP, Office of the Environment	
Wildlife Issues	WEP, Office of the Environment	USDA, NYS DEC
Community Deer Management Planning	WEP, Office of the Environment	USDA, NYS DEC
Rain Barrel workshops	WEP	
Rain Garden Workshops	WEP	
Landscaping for Water Quality	WEP	
Climate Stewards	WEP, Office of the Environment	NYS, Cornell
Waste Streams	WEP, Office of the Environment	
Outdoor Safety	WEP, Office of the Environment, County Parks	



- Tick and Lyme
- Community Forestry
- Water Quality
- Climate Stewards

# Agriculture & Food Systems

## Programming Connections to County Departments

Agriculture and Food Systems	County Departments	External Partnering Organizations
Farmland protection	Planning Department	NYALT, NYS Ag and Markets
Onondaga Grown	Planning Department	All farms
ON Farm Fest	Planning Department	12 farms
Fifth Grade Dairy Day	Ag Council	Barbland Dairy, Farm Bureau, School Districts
Ag Literacy	Ag Council	School Districts
Food Preservation	Ag Council	Cornell Geneva AgriTech
Value Added Production	Planning Department	Cornell Geneva AgriTech
Agri-Tourism	Planning Department	Cornell
Farmworker Health	Health Department	Upstate, NYCAM, Dairy Farms
Avian Flu	Health Department	USDA
Spotted Wing Drosophila		Cornell, Vegetable Farms
Spotted Lantern Fly		Cornell
Soil Testing & Interpretation		Dairy One and Cornell
NYS DEC Pesticides credit		NYS DEC and Cornell
Master Gardener Program	Planning Department, WEP	Cornell
Urban Farming		Jubilee Homes, Brady Farm
Food aggregation	Planning Department	CNY Regional Market, CCE Harvest NY
Voice of the Farmer Garden		NYS Fair, NYS Ag and Markets
CNY Regional Market	Health Department, Planning, Ag Council	CNY Regional Market, CCE Harvest NY
Maple Production		Cornell
Orchard Mason Bees and Native Pollinators		Cornell

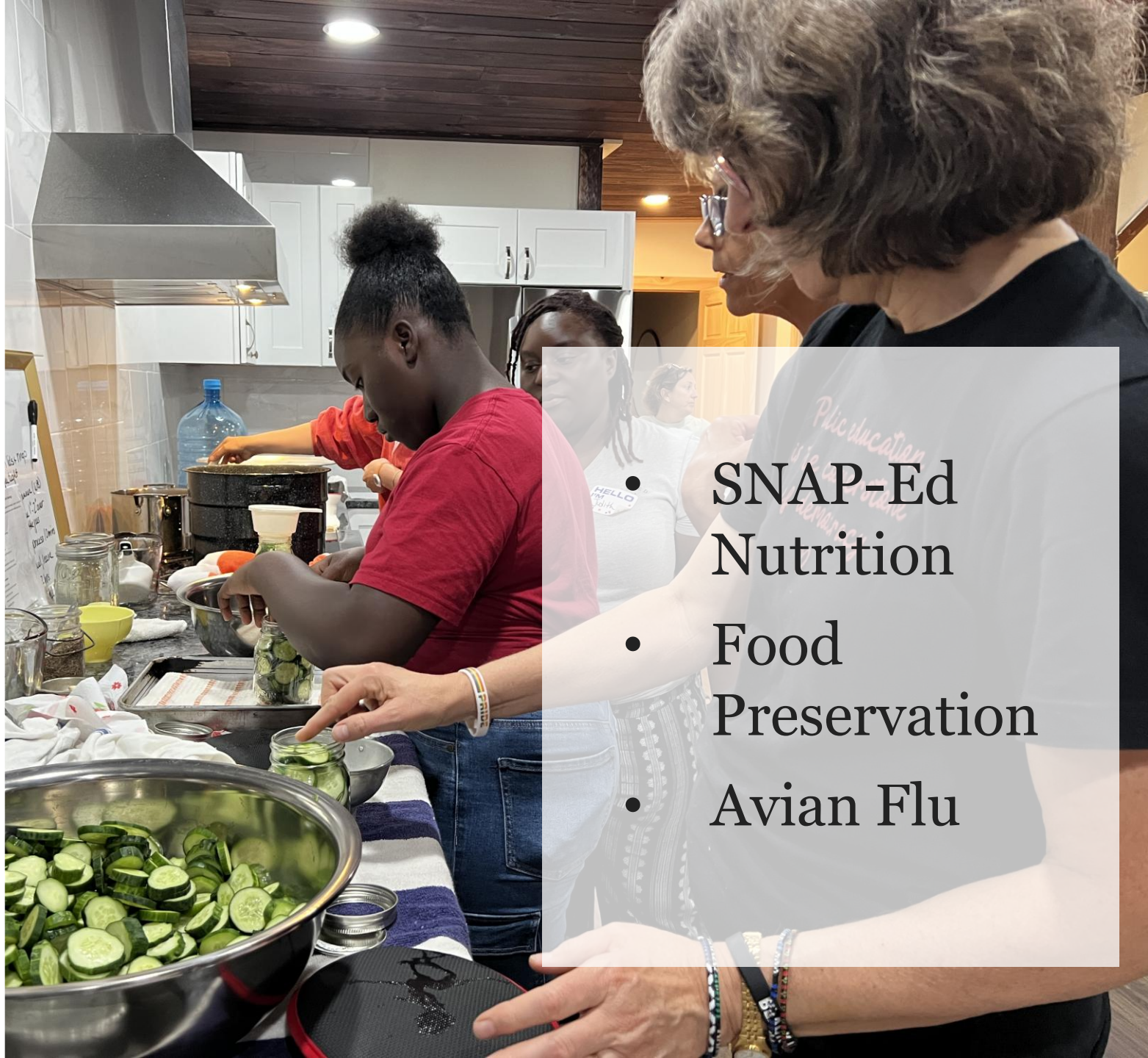


- CNY Regional Market Food Innovation
- Farm to School & Food Processing
- ON Farm
- Dairy Day
- Ag Literacy
- Ag Workforce Development
- Master Gardener Program & Blocks in Bloom
- Voice of the Farmer Garden

# Health and Nutrition

- SNAP Nutrition Education over 10 years
- Over 30,000 participants
- \$11,000,000 funding
- Nutrition education, sourcing healthy food, food safety, family cooking, healthy lifestyle, additional resources.
- 110+ program partners

Health and Nutrition	County Department	External Partnering Organizations
SNAP Nutrition Education	Health	110 community partners, NYS OTDA
Food Preparation	Health	Cornell and Geneva Agri Tech
Safe Food Handling	Health	Cornell and Geneva Agri Tech
Chronic Disease Prevention	Health	
Avian Flu, Canada geese	Health, Office of the Environment, WEP	
Food Preservation	Health, Ag Council	



- SNAP-Ed Nutrition
- Food Preservation
- Avian Flu

# 4-H Youth & Family Development

## Programming Connections to County Departments

4-H Youth and Family Development	County Department	External Partnering Organizations
4-H Summer Camp	Family Services, Youth Bureau, County Parks, Office of the Environment	City of Syracuse, ACA, State 4-H
4-H Youth Fair	Ag Council	NYSAM
4-H Clubs	Youth Bureau	
4-H Archery Program		Onondaga Sportsmen Federation, 4-H State
4-H Public Presentations	Youth Bureau	
Sewing		
Cooking		
Animal Science	Ag Council	
Coleman Lanterns		
Map and Compass Orienteering		
Gardening		
Youth Projects		
Youth Mental Health & Educator Training		
Character Camp		Cornell, ACA
Capital Days		
Teen Leadership		
Positive Youth Development Training	Youth Bureau	

- Youth Mental Health
- Environmental Camp
- Positive Youth Development



# Did you know? Foundational Projects Developed by CCE Onondaga:

- Jubilee Farm
- Brady Farm
- Gifford Zoo Teaching Garden
- Syracuse Grows
- RISE Agricultural Program
- OEC Forestry Program
- SOSFA
- Park Associations
- Syracuse City Parks Gardens
- Dr. King School Garden
- Salt City Harvest Farm
- Municipal Tree Committees & Tree USA Recognitions
- Syracuse Urban Food Forest Project/Elwood Park Maple Sugaring
- Community Rain Gardens
- Southwest Community Farm



# A Work of Heart

- 20 Staff
- 150 Volunteers
- 11 Elected Board Members and 2 Appointed



# Funding

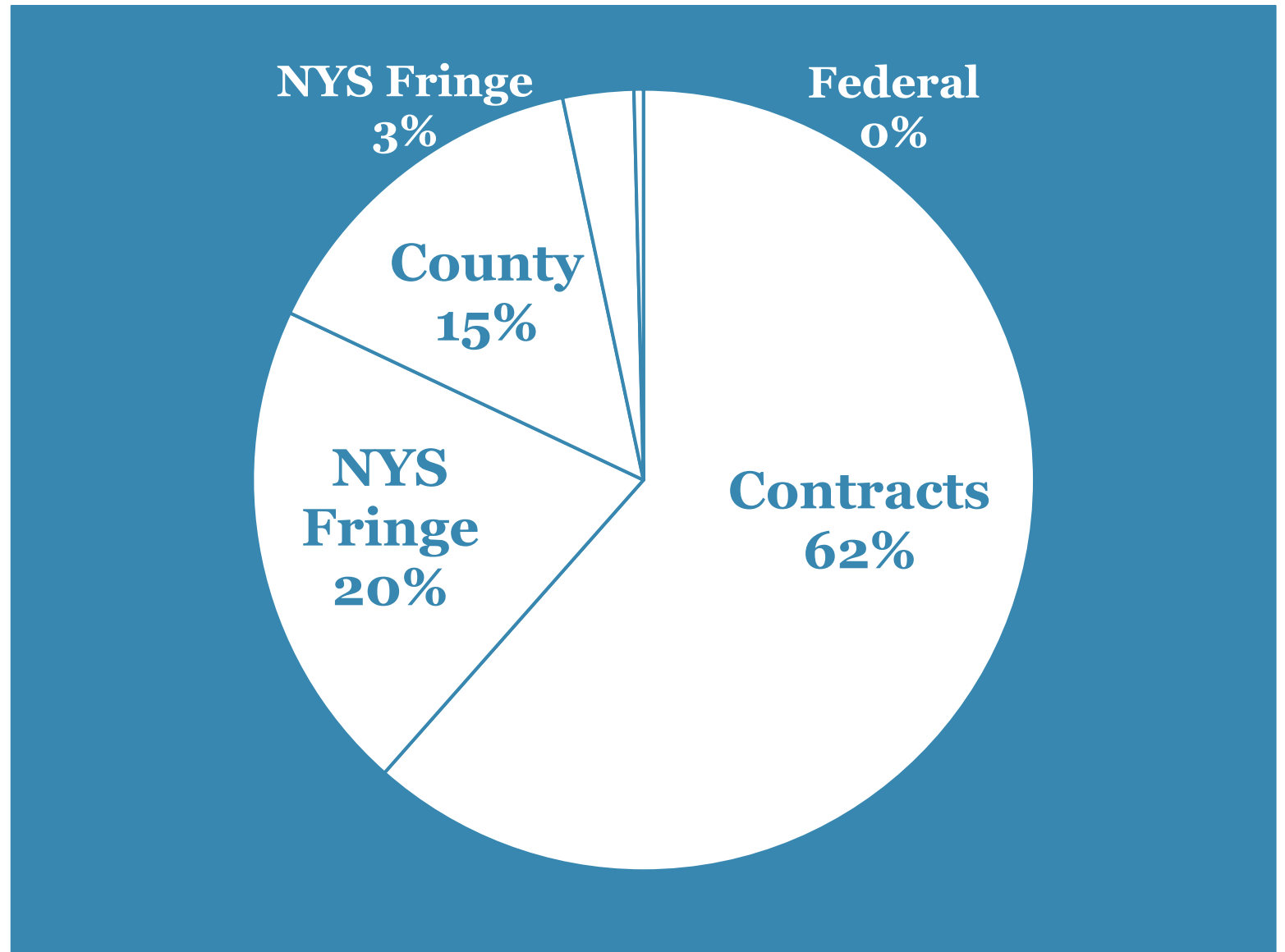
Contracts: 61%

NYS Fringe: 21%

County Based: 15%

NYS: 3%

Federal: 0.4%



# Looking Forward... Emerging Issues:



Nutrition  
Program



CNY Regional  
Market



Agriculture  
Workforce



Avian Flu



Food  
Preservation



Youth Mental  
Health



Afterschool  
enrichment



Farmworker  
health

**See the impact:**



# Our invitation... get involved & get to know CCE:

## KEEP IT SIMPLE...

- Come to a workshop or event
- Let's meet!
- Sign up for our newsletter
- Link us on Social Media
- Subscribe to YouTube Channel

## TAKE A DEEPER DIVE...

- Become a volunteer
  - Public Presentations
  - Judging
  - Ag Literacy Reader
  - More!

# QUESTIONS?

**Let CCE be your local know-it-alls.  
Information you can *trust*.**