



OCRRA  **org** [®]

Agenda

1. **What is OCRRA?**
 - Our Structure and Services
2. **Extended Producer Responsibility**
3. **Ley Creek Campus**
4. **Recycling – Flow Control**

Ask Questions Anytime!

OCRRA's Organization

What is OCRRA?

- Non-profit, public benefit corporation created by the NYS Legislature
- Governed by 15-person board appointed by County, Town, and City governments.
- No tax support; revenue comes from tipping fees, electricity and commodity revenues
- Serving 33 Towns & Villages in Onondaga County, and the City of Syracuse
- **Flow controlled municipal solid waste (MSW)**

OCRRA's Mission

OCRRA serves our community by providing a comprehensive solid waste management system that is environmentally, socially and fiscally sustainable.



Key Operations of OCRRA



**Rock Cut Road
Transfer Station**



Waste-to-Energy



**Amboy
Compost Facility**



**Ley Creek
Campus Rebuild**



Ash Hauling



**Jamesville
Compost Facility**



Bypass Hauling

Key Contracts and Community Relationships

- County-OCRRRA Agreement
- Waste-to-Energy Facility (WTE)
- Local Waste Haulers
- Landfills for Ash & Bypass Disposal
- Material Recovery Facility (MRF)
- Markets for Recyclables/Metals
- Recycling Outside the Bin
(film plastics, textiles, batteries)
- Household Hazardous Waste





Recycling

260,670 tons

MRF

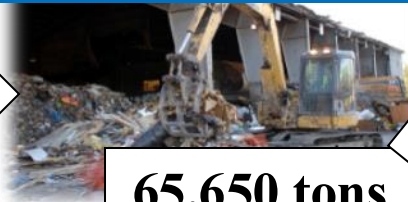


Transfer Station



C&D

90,100 tons



65,650 tons

WTE



Trash

295,230 tons

1,650 tons recyclables & metal

12,933 tons metal

22,800 tons

74,600 tons ash
(alternative daily cover)



Food

3,400 cubic yards



Compost Site



Landfill

Waste-to-Energy

- **30-year operating record**
- **Reworld contract extension (2015-2035)**
 - ✓ Legislative control of waste importation
 - ✓ Environmental oversight
 - ✓ \$15 million invested in upgrades



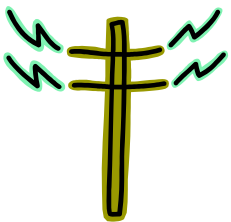
Local Solid Waste Management Energy & Materials Recovery



Incoming waste travels ~20 miles



Power
30,000+
homes



~3.5% of waste
is recovered
metal



90% Volume
Reduction



GHG Avoidance from WTE

Processing
non-recyclable waste
at the WTE Facility
avoided **272,090*** ton
of CO₂e in 2022

* based on 0.75 ton CO₂ / ton processed
based on NYS WTE GHG Reduction
Overview, July 2016



**OCRRA's sustainable solid waste system avoids
almost one million tons of CO₂e each year**

OCRRRA: Statewide Leader in Organics Recovery



Benefits of Compost



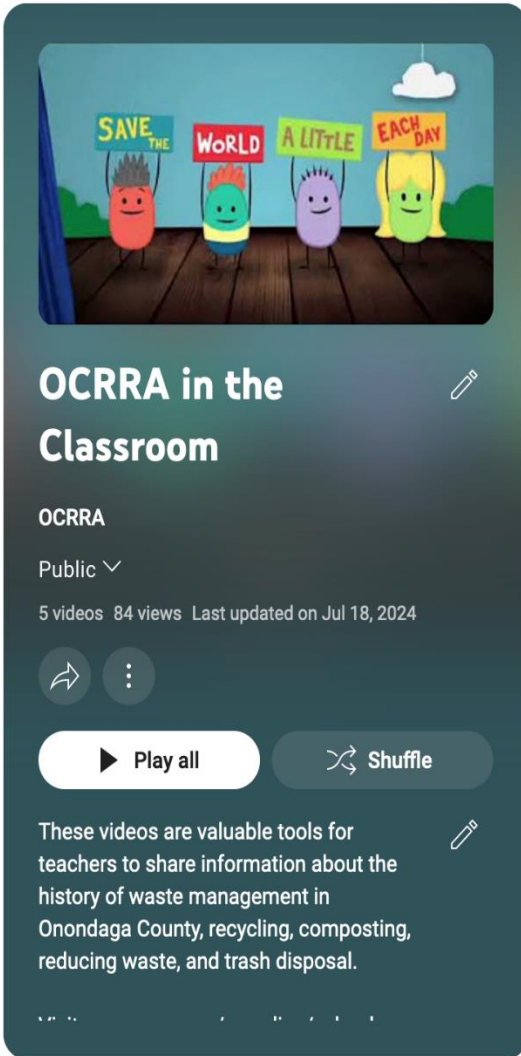
- Carbon sequestration
- Storm water control
- Erosion control
- Moisture retention
- Replaces chemical pesticides and fertilizers
- OCRRA supplied compost to County for Onondaga Lake shoreline restoration

Recycling: Cart Rollout

- Blue bins started the recycling program and incentivized the public to source separate
- Community has outgrown blue bins as we recycle more
- Carts improve collection, reduce litter, keep recyclables clean & dry



Public Education



OCRRA in the Classroom

OCRRA

Public

5 videos 84 views Last updated on Jul 18, 2024

Play all Shuffle

These videos are valuable tools for teachers to share information about the history of waste management in Onondaga County, recycling, composting, reducing waste, and trash disposal.

Sort



OCRRA in the Classroom: Waste Management Overview

OCRRA • 5 views • 3 weeks ago

4:06



OCRRA in the Classroom: Composting

OCRRA • No views • 3 weeks ago

3:34



OCRRA in the Classroom: Recycling

OCRRA • 8 views • 3 weeks ago

3:31



OCRRA in the Classroom: Reduce Waste

OCRRA • 3 views • 3 weeks ago

3:52



OCRRA in the Classroom: Trash

OCRRA • No views • 3 weeks ago

4:29

Extended Producer Responsibility (EPR)

EPR: Uses financial incentives to encourage manufacturers to design environmentally friendly products and reduce waste

Goal: Create a circular economic model that boosts supply and demand of recycled materials



Successful Programs in NYS

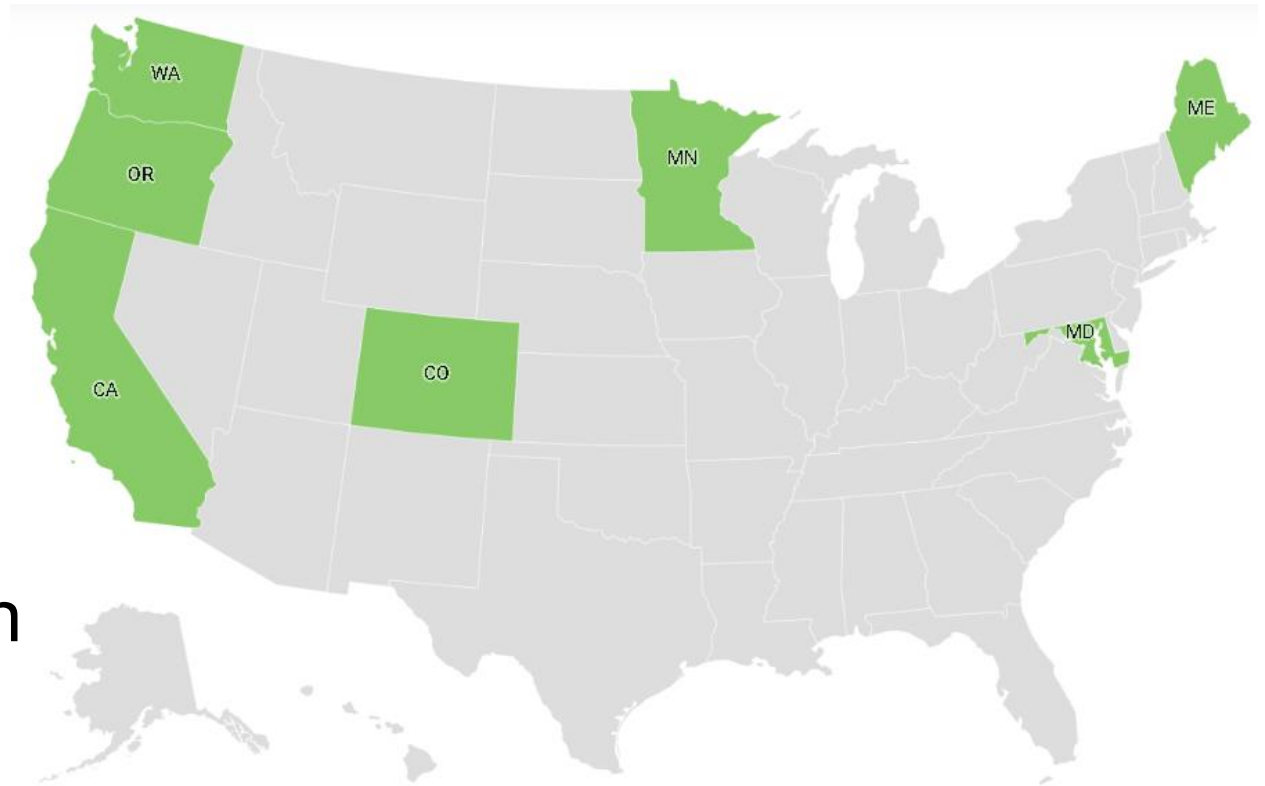
- Electronics
- Rechargeable batteries
- Pharmaceuticals
- Paint
- Tires
- Film Plastics



Mapping U.S. Packaging EPR

7 States with EPR Laws

- Maine
- Oregon
- Colorado
- California
- Minnesota
- Maryland
- Washington



Goals of EPR for Packaging

- **Reduces waste**
- **Incentivizes producers to design for recyclability and reuse**
- Shifts financial and operational responsibility from taxpayers and entities like OCRRA to producers
- Funds recycling education, infrastructure, and provides market stability



Ley Creek Future

- **Good location**
- **Modern** solid waste campus
- **New services:**
 - EcoDrop
 - Increased recovery
 - Metal
 - Cardboard
- **Preparation for increased economic activity!**
- **Construction 2027 & 2028**



Ley Creek Past



Ley Creek Campus

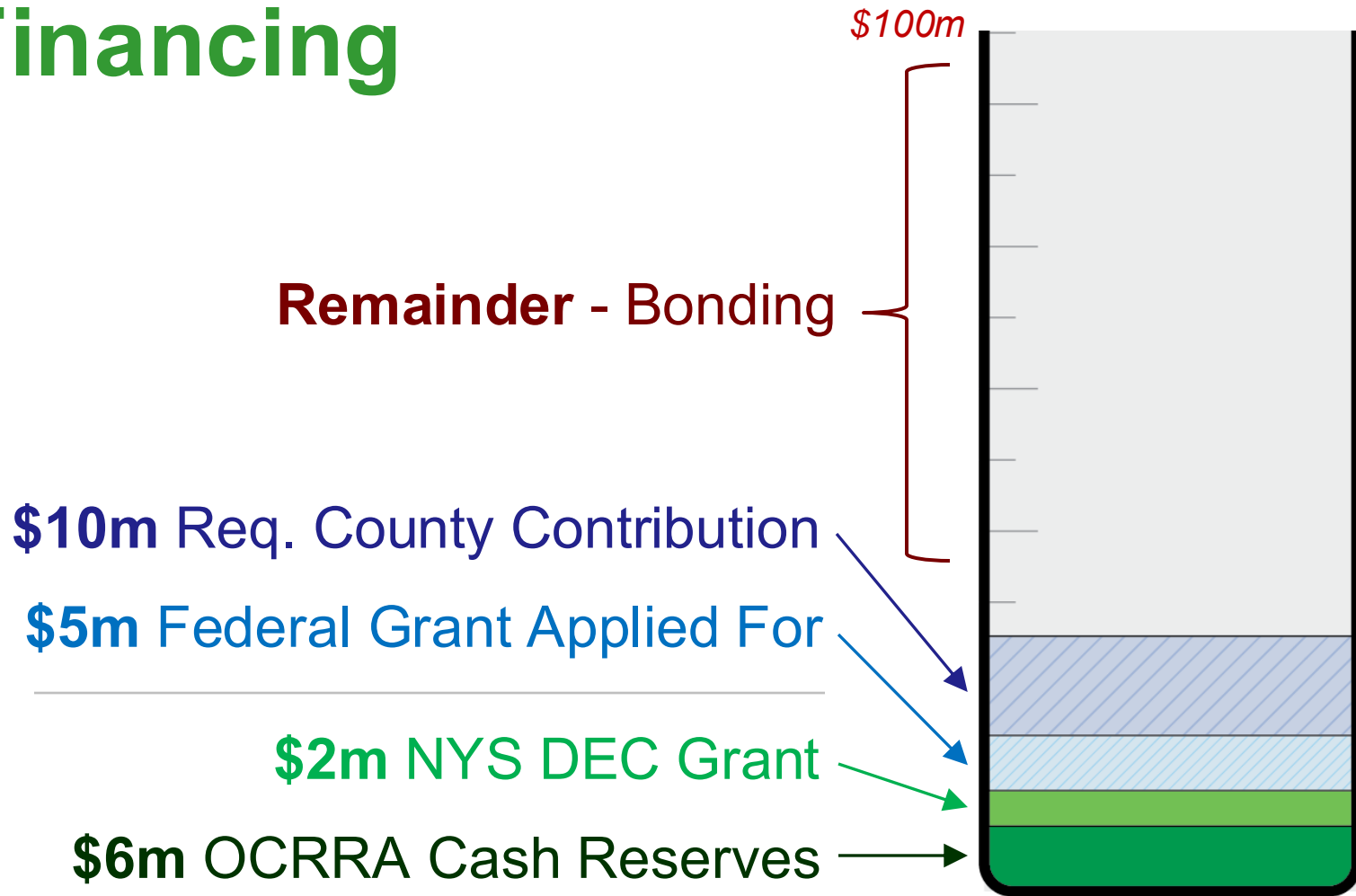


OCRRA - Ley Creek Campus
Conceptual Site Rendering From Southeast

Transfer Station and EcoDrop



Ley Creek Financing



Ley Creek Ask

1) \$10 Million Cash Support

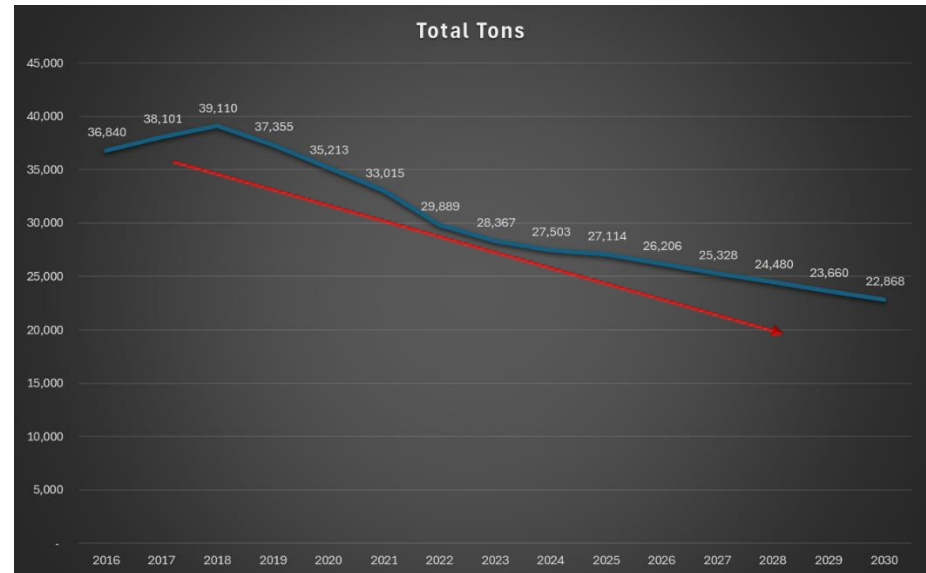
- Rebuilds vital community asset
- Prepares community for expanded economic development

2) Assistance with Financing

- County enjoys lower bond interest rates
- Saves constituency money – no out of pocket for County

Flow Control: Recycling

- MRF volumes declining
- Per ton cost increasing
- Flow control peers:
 - Oneida-Herkimer
 - Rockland County
 - Ulster County
- Ley Creek campus provides opportunity for flow control



Flow Control Benefits

- Consistent volumes = Consistent tipping fees
- Allows reinvestment in recycling infrastructure
- Ensures materials are recycled
- Encourages hauler competition – everyone on equal playing field
- Successful for solid waste in our community for over 30 years!



Questions? Contact us!

315.453.2866 - OCRRA.org

Tammy Palmer,
Public Information Officer
tpalmer@ocrra.org

Follow us on our socials!

