



Onondaga County Legislature

HASSINA K. ADAMS
Clerk

NICOLE WATTS
Chairwoman

SPENCER BERG
Deputy Clerk

401 Montgomery Street • Court House • Room 407 • Syracuse, New York 13202
Phone: 315.435.2070 • onondagacountylegislature@ongov.net • www.ongov.net/legislature

REVISED

RESOLUTION NOS. 10-23

OFFICE OF THE CLERK

February 3, 2026

Livestream Available: <https://www.youtube.com/@onondagacountylegislature>

Listed below are the resolutions presented to the County Legislature at the February Session. The meeting was held at **1:06 p.m. on Tuesday, February 3, 2026.**

- A. CALL TO ORDER
- B. CALLING THE ROLL OF MEMBERS BY THE CLERK
- C. INVOCATION – **Mr. Meaker**
- D. SALUTE TO THE FLAG – **Mr. Garland**
- E. PREVIOUS SESSION MINUTES APPROVED
- F. PRESENTATION OF COMMUNICATIONS
 1. **Gold Seal:**
 - a. Commemorating a Century of Black History “Firsts” in Onondaga County Public Service (Sponsored by Ms. Hernandez)
 - b. Honoring the Rapid Response Coalition Protecting Onondaga County Refugee and Immigrant Neighbors (Sponsored by Ms. Block)
 2. **Communications:**
 - a. 12.19.2025 – Letter from County Executive J. Ryan McMahon, II – Re: Appointment to the Onondaga County Board of Ethics (Hon. Anthony J. Paris)
 - b. 1.8.2026 – Letter from Commissioner Odean D. Dyer – Re: Transmittal of Bond Resolution No. 172 and Map, Plan, and Report – Oak Orchard Industrial Sewer District Formation
 - c. 1.29.2026 – Letter from Chairwoman Watts – Re: Appointments to the Onondaga Soil and Water Conservation District (Ken Bush, Jr., Jeremiah W. Thompson)
 3. **Public Comment:**
 - a. The public comment period had 1 speaker.
- G. CALL OF RESPECTIVE LEGISLATIVE DISTRICTS (District 2)

6th DISTRICT – MR. ERIKSEN, ENVIRONMENTAL PROTECTION

1. **NO. 10** A Resolution Calling a Public Hearing in Connection with the Oak Orchard Industrial Sewer District within the Onondaga County Consolidated Sanitary District (February 17, 2026, at 12:00 p.m.) (16-0-1 Block)

8th DISTRICT – MR. RYAN, COUNTY FACILITIES

2. **NO. 11** Amending the 2026 Onondaga County Budget to Accept Grant Funds from the New York State Dormitory Authority’s Community Resiliency, Economic Sustainability, and Technology Program (\$50,000) (16-0-1 Block)

3. **NO. 12** Amending the 2026 Onondaga County Budget to Accept Grant Funds from the New York State Office of Parks, Recreation & Historic Preservation Snowmobile Program (\$46,212) *(16-0-1 Block)*
4. **NO. 13** Personnel Resolution *(16-0-1 Block)*
5. **NO. 14** Authorizing the Purchase of Real Property Located in the Towns of Geddes and Onondaga *(16-0-1 Block)*

9th DISTRICT – MS. WATTS

6. **NO. 15 – WAIVER** Confirming Appointments to the Onondaga County Soil and Water Conservation District Board (Ken Bush, Jr., Jeremiah W. Thompson) *(16-0-1 Block)*

15th DISTRICT – MR. BROWN, WAYS & MEANS

7. **NO. 16** A Resolution Approving and Directing the Correction of Certain Errors on Tax Bills *(16-0-1 Block)*
8. **NO. 17** A Resolution Approving and Directing the Correction of Certain Errors on Tax Bills *(16-0-1 Block)*
9. **NO. 18** A Resolution Directing a Public Hearing to Consider Increasing the Income Limitation Relative to Partial Exemption from Real Property Taxes for Persons 65 Years of Age and Older (March 3, 2026, at 11:30 a.m.) *(16-0-1 Block)*
10. **NO. 19** Confirming Appointment to the Onondaga County Board of Ethics (Hon. Anthony J. Paris) *(16-0-1 Block)*
11. **NO. 20** Authorizing the Settlement of the Action Filed with the Supreme Court of the State of New York, County of Onondaga, Byrd v. Onondaga County, et. al. *(16-0-1 Block)*
12. **DEFEATED** Authorizing the Settlement of the Action Filed in the U.S. District Court, Northern District of New York, Rivas v. Onondaga County, et. al. *(8-7-1-1 Block, Eriksen)*

16th DISTRICT – MR. GARLAND, PUBLIC SAFETY

13. **NO. 21** A Resolution Authorizing Certain Deputy Sheriffs of the Onondaga County Sheriff's Department to Participate in the Optional Twenty-Year Retirement Plan Provided for Under Section 552 of the New York State Retirement and Social Security Law *(16-0-1 Block)*

17th DISTRICT – MS. HERNANDEZ

14. **NO. 22 – WAIVER** Memorializing the United States Congress and Onondaga County to Protect our Neighbors from Misconduct and Overreach by Federal Immigration Officials *(9-7-1 Block)*

1st DISTRICT – MR. MAY

15. **NO. 23 – WAIVER** Confirming Appointment of Ethan LaMontagne as Legislative Aide of the Onondaga County Legislature *(16-0-1 Block)*

LOCAL LAWS

- a. **PASSED** A Local Law Relating to Certain Fees Collected by the Onondaga County Health Department *(16-0-1 Block)*

I. UNFINISHED BUSINESS - NONE

- J. ANNOUNCEMENTS FROM THE CHAIR – NONE
- K. ADJOURNMENT – 2:27 P.M.

**FEBRUARY 3, 2026
SESSION**

ROLL CALL

LEGISLATOR	PRESENT:	ABSENT:	
1. MAY	✓		<p align="center"><i>Chairwoman Watts called the meeting to order at 1:06 p.m.</i></p>
2. MEAKER	✓		
3. BURTIS	✓		
4. THOMPSON	✓		
5. BLOCK		✓	
6. ERIKSEN	✓		
7. ROMEO	✓		
8. RYAN	✓		
10. DENTON	✓		
11. McCARRON	✓		
12. KNAPP	✓		
13. BUSH	✓		
14. KELLY	✓		
15. BROWN	✓		
16. GARLAND	✓		
17. HERNANDEZ	✓		
9. WATTS	✓		
TOTAL:	16	1	

Onondaga County Legislature

PRESENTER: NODESIA R. HERNANDEZ, Majority Leader, Legislator District 17

Co-sponsors: Timothy T., Burtis (3rd District), Jeremiah W. Thompson (4th District), Ellen Block (5th District), Gregg Eriksen (6th District), Dan Romeo (7th District), Chad M. Ryan (8th District), Nicole Watts (9th District), Elaine Denton (10th District), Maurice Brown (15th District), Charles E. Garland (16th District)

This Gold Seal has been confirmed and brought forth by the above-named presenter and sponsors of the Onondaga County Legislature in the State of New York on this 3rd Day of February 2026 to:

Commemorate a Century of Black History “Firsts” in Onondaga County Public Service

WHEREAS, Each year, the Association for the Study of African American Life and History (ASALH), founded by Dr. Carter G. Woodson, selects a theme to promote the education, research, and recognition of Black contributions in life, history, and global culture; and

WHEREAS, In observance of the theme this year “A Century of Black History Commemorations,” marking 100 years since the founding of Black History Month in 1926, we recognize the achievements of Black public servants in Onondaga County including, but not limited to:

WHEREAS, William Herbert Johnson was the first African American to graduate from Syracuse University's College of Law in 1903; and

WHEREAS, Marjorie Carter was the first Black teacher in the Syracuse City School District in 1950; and

WHEREAS, Willie B. Gilbert was the first African American Syracuse Police Officer in 1951; and

WHEREAS, Chester Whiteside, was the first Black disc jockey, television commentator, and appointed Black Syracuse firefighter in 1954, and

WHEREAS, Malchester Reeves became the first Black elected official in Syracuse in 1961; and

WHEREAS, Clarence "Junie" Dunham was the first Black man elected to the Onondaga County Legislature in 1973; and

WHEREAS, Constance Timberlake was the first Black woman elected to the Syracuse Board of Education in 1973; and

WHEREAS, Cassandra Jones-Ingram was the first Black woman to serve in the Syracuse Police Department in 1981; and

WHEREAS, Herman Edge became the first African American Deputy Chief of the Syracuse Police Department in 1986; and

WHEREAS, Hon. Langston C. McKinney was appointed Syracuse's first Black City Court Judge in 1986; and

WHEREAS, Hon. Sandra Towns was Syracuse's first Black woman elected to City Court in 1988; and

WHEREAS, Danita Thomas was the first Black woman to serve in the Syracuse Fire Department in 1988; and

WHEREAS, Lillie Fields was the first Black principal in the Liverpool Central School in 1989; and

WHEREAS, Lovely Winslow became the first Black woman to become a County Legislator in 2000; and

WHEREAS, Bea Gonzales was the first Black Hispanic person to hold citywide office in Syracuse when she was elected to the City's School Board in 1991 and the first Latina President of the Syracuse Common Council in 2001; and

WHEREAS, Van B. Robinson was a pioneer, civic leader, and the first African American President of the Syracuse Common Council in 2009; and

WHEREAS, Samuel D. Roberts was the first Black person to represent Onondaga County in the New York State Assembly; and

WHEREAS, Pamela J. Hunter was the first Black woman to represent the 128th District in the New York State Assembly; and

WHEREAS, Linda Ervin was the first Black woman to serve as Minority Floor Leader of the Onondaga County Legislature, on the Jamesville DeWitt Board of Education and serve as President of the Board of Education; and

WHEREAS, Mary Smith was the first Black woman promoted to the rank of sergeant in the Onondaga County Sheriff's Office in 2014; and

WHEREAS, Hon. Gordon Cuffy was the first appointed Black Onondaga County Court judge in 2017; and

WHEREAS, Helen Hudson was the first Black Woman elected Syracuse Common Council President in 2018; and

WHEREAS, Michael Monds was appointed as the first Black Fire Chief of the Syracuse Fire Department in 2018; and

WHEREAS, Tamica Barnett was promoted as the first female Black Lieutenant of the Syracuse Fire Department in 2021; and

WHEREAS, Patricia McBride was appointed the first Black City Clerk in Syracuse in 2022; and

WHEREAS, Bishop H. Bernard Alex was elected as the first Black DeWitt Towne Board member in 2024; and

WHEREAS, Sharon Owens was elected as Syracuse's first Black Mayor in 2025; and

WHEREAS, Hassina Adams was appointed as the first Black Onondaga County Legislature Clerk in 2026; and

WHEREAS, Nodesia R. Hernandez was appointed as Majority Leader of the Onondaga County Legislature in 2026; and

WHEREAS, Cheryl McDonald was the first Black woman appointed to the North Syracuse School Board in 2026; and now, therefore be it

RESOLVED, that Leader Nodesia R. Hernandez and all members of the Onondaga County Legislature, do hereby recognize and honor the 100th anniversary of Black History Month in Onondaga County.

I hereby certify that the foregoing was duly noted by the County Legislature of Onondaga County, New York. Witness my hand and seal of said Legislature.



Clerk, County Legislature
Onondaga County, N.Y

Onondaga County Legislature

Presenter: Ellen Block, Legislator 5th District

Co-sponsors: Nicole Watts (9th District), Maurice Brown (15th District), Nodesia Hernandez (17th District)

This Gold Seal has been confirmed and brought forth by the above-named presenter and sponsors of the Onondaga County Legislature in the State of New York on this 3rd Day of February 2026 to:

Honor the Rapid Response Coalition Protecting Onondaga County Refugee and Immigrant Communities

- WHEREAS,** New York State is home to more than 4 million immigrants, representing nearly 23 percent of the state's population, contributing \$68 billion dollars in taxes and an estimated \$153 billion dollars in spending power, according to the Pew Research Center; and
- WHEREAS,** Immigrants make up more than 60 percent of home healthcare workers and aides for the elderly, seek portable professions such as nursing assistants, childcare workers, and construction workers, and fill critical, hard-to-fill jobs in New York; and
- WHEREAS,** Onondaga County is a multicultural community with approximately 35,000 residents self-reporting as born outside of the United States, 26 percent identifying as Black, Hispanic, or Asian according to the 2020 U.S. Census American Community Survey, and
- WHEREAS,** Soon after taking office, the President of the United States signed several Executive Orders granting Immigration and Customs Enforcement ("ICE") broad authority to pursue, detain, and deport immigrants, which has resulted in aggressive enforcement toward minority groups and non-minority citizens alike; and
- WHEREAS,** In response, community-based groups across the country have built coalitions to deploy rapid response aid to affected communities by offering legal clinics and Know Your Rights workshops, deploying rapid response hotlines, advocating state-level protections, and providing food, transportation, and counseling assistance to neighbors; and
- WHEREAS,** The Syracuse Immigrant and Refugee Defense Network (SIRDN) is part of a nation-wide network of innovative workers' centers advocating for immigration justice in Central New York and through organizing and solidarity support for affected individuals and families; and
- WHEREAS,** SIRDN, the Workers' Center, and local coalitions are a lifeline for immigrant residents who strive to build better lives in Onondaga County; now, therefore be it
- RESOLVED,** that Legislator Ellen Block and all members of the Onondaga County Legislature, do hereby recognize and honor the extraordinary work of the Syracuse Immigration and Refugee Defense Network.

I hereby certify that the foregoing was duly noted by the County Legislature of Onondaga County, New York. Witness my hand and seal of said Legislature.



Clerk, County Legislature
Onondaga County, N.Y.



County of Onondaga
Office of the County Executive

Brian J. Donnelly
Deputy County Executive

J. Ryan McMahon, II
County Executive

Ann Rooney
*Deputy County Executive
Human Services*

Cyndey M. Johnson
*Deputy County Executive
Physical Services*

*John H. Mulroy Civic Center, 14th Floor
421 Montgomery St. Syracuse, NY 13202
Phone: 315.435.3516
www.ongov.net*

Robert M. Petrovich
*Deputy County Executive
Economic Development & Planning*

December 19, 2025

TO THE HONORABLE MEMBERS OF THE ONONDAGA COUNTY LEGISLATURE:

Pursuant to Local Law No. 13-1990, I am hereby appointing subject to confirmation of the County Legislature, the following individual to the Onondaga County Board of Ethics.

APPOINTMENT:

Hon. Anthony J. Paris
123 Wendell Terrace
Syracuse, NY 13203

TERM EXPIRES:

December 31, 2028

Your confirmation of this appointment would be greatly appreciated.

Sincerely,

A handwritten signature in blue ink, appearing to read "J. Ryan McMahon, II", is written over a faint, larger version of the same signature.

J. Ryan McMahon, II
County Executive

cc: Jamie McNamara, County Legislature

Hon. Anthony J. Paris

Special Counsel

The Honorable Anthony J. Paris is Special Counsel at Costello, Cooney & Fearon. He joined the Firm in this role in 2021.

In his role at the Firm, Tony's practice encompasses all areas of traditional general practice, including mediations, alternative dispute resolution matters, real estate matters, estates, personal injury litigation, domestic relations issues, criminal and traffic matters, and commercial transactions. Tony services a wide variety of clients from private individuals seeking legal counsel to large corporate entities looking for Tony's strategic legal guidance.

Before joining the Firm, Tony served as a New York State Supreme Court Justice for 20 years, as an Assistant District Attorney for Onondaga County, and an Onondaga Family Court Judge. Tony also had his own private practice for 20 years prior to his tenure in the public sector.



J. Ryan McMahon, II, County Executive
Odean D. Dyer, P.E., Commissioner
650 Hiawatha Blvd. West
Syracuse, NY 13204-1194
(315) 435-2260 or (315) 435-6820
FAX (315) 435-5023
<http://www.ongov.net/wep/>

January 8, 2026

Chairwoman and Honorable Members
Onondaga County Legislature
401 Montgomery Street
Syracuse, NY, 13202

Re: Transmittal of Bond Resolution No. 172 and Map, Plan, and Report -Oak Orchard Industrial Sewer District Formation

Chairwoman and Honorable Members of the Legislature:

On behalf of the Onondaga County Department of Water Environment Protection, I am transmitting Bond Resolution No. 172, together with the accompanying Map, Plan, and Report, for the proposed Oak Orchard Industrial Sewer District Formation for your review and consideration.

The enclosed materials outline the boundaries, purpose, and proposed adjustments associated with the formation of the Oak Orchard Industrial Sewer District. The Bond Resolution designates Onondaga County Department of Water Environment Protection (WEP) as the responsible agency for establishing an industrial wastewater district and directing WEP to prepare maps and plans for such district.

The Map, Plan, and Report provides a description of the proposed district, including its geographic limits. Collectively, these documents support the establishment of the district.

Sincerely,

ONONDAGA COUNTY DEPARTMENT OF
WATER ENVIRONMENT PROTECTION

A handwritten signature in black ink, appearing to read "Odean D. Dyer".

Odean D. Dyer, PE
Commissioner



Onondaga County Legislature

NICOLE WATTS

Chairwoman

401 Montgomery Street Court House, Room 407

Syracuse, New York 13202

Leg (315)-435-2070

nicolewatts@ongov.net

TO: Gregg Eriksen, Chair
Environmental Protection Committee members

FROM: Nicole Watts, Chairwoman

RE: Appointments to the Onondaga County Soil and Water Conservation District Board

Pursuant to Section 1903 of the Onondaga County Charter and in accordance with Section 7 of the New York State Soil and Water Conservation Districts, I am appointing Legislators Ken Bush, Jr. and Jeremiah W. Thompson to serve as members of the Onondaga County Soil and Water Conservation District Board of Directors. Legislator Ken Bush, Jr. is replacing Legislator David H. Knapp, and Legislator Jeremiah W. Thompson is replacing Mark Olsen as successors to members whose annual terms have expired. These appointments will expire on December 31, 2026.

Each resume is attached for your review. These appointments will require confirmation of the full Legislature at its February 3, 2026, Session.

Thank you for your anticipated cooperation.

cc: Hassina Adams, Clerk
Legislators

KEN BUSH JR.
17 N. Main St. P.O. Box 603
Jordan, NY 13080
(315) 689-9301
Email: kenbushjr@gmail.com

Onondaga County Legislator, 13th District

Family:

Wife- Justine Price Bush, 5 children, 9 grandchildren

Education:

Jordan-Elbridge High School, Jordan, NY
Denison University, Granville, Ohio

Professional Experience:

Owner: Bush Funeral Homes

Government Service:

Onondaga County Legislator, 13th District 2018 to present
Currently serving on the Ways & Means and Facilities Committees
Previously served on the Onon. County Soil & Water District Board
Former Town of Elbridge Supervisor 2002-2017

Community Service:

Member of Baldwinsville Chamber of Commerce
Member of Camillus Chamber of Commerce
Member of Camillus Elks #31
Member of Jordan Masonic Lodge #386
Jordan Memorial Day Committee chair
Former member of the Westar Federal Credit Union Board of Directors
Past President of Jordan Library Board of Trustees
Former board member of Onondaga Historical Association
Former board member of Cornell Co-operative Extension
Community service award from American Legion Post 1127
Community service award from VFW Post
JE School District "Wall of Honor" Award

Jeremiah W. Thompson

PO Box 35672
Syracuse, NY 13235

JeremiahThompson@ongov.net
(315) 407-1622

Political

County Legislator, 4th District

Dec. 2025 – Present

Onondaga County Legislature

- Maintain regular connections with constituents and tend to their concerns
- Serve on Facilities and Environmental Protection Committees
- Attend legislative sessions and vote on resolutions
- Participate in budget process and advocate for my district's interests

Chair, Zoning Board of Appeals

Fall 2025 – Present*

Village of Liverpool

- Hear from residents pursuing code variances
- Mediate between neighbors regarding disputes over variances
- Build consensus and seek resolutions for all parties
- *Served as member from 2023–2025

Teaching

Professional Writing Instructor for Writing 105, 205, 307, & 308

Fall 2005 – Present

Syracuse University: Syracuse, NY

- Develop syllabi, assignments, and lesson plans for writing and research courses.
- Collect, assess, and respond to all student work.
- Meet with students during office hours to discuss essays or general concerns.
- Attend professional development sessions.

Public Communication

Community Reporter/Producer for WAER

January 2016 – August 2017 *WAER Public Radio: Syracuse, NY*

- Research current local events and emerging issues and generate interview questions.
- Conduct interviews with local newsmakers face-to-face and via phone.
- Seek perspectives from under-represented groups and diverse voices.
- Participate in on-air membership drives.

Producer and Host of *The Forum* on WERW

October 2009 – May 2015

Syracuse University: Syracuse, NY

- Researched and developed topics for public affairs show.
- Booked thoughtful, informed guests and conducted pre-interviews.
- Engaged guests in dialogic conversations about social and political issues.
- Utilized social media to promote show, integrate listener comments, and share recordings.

Education

Master of Arts in American Studies: May 2003

Purdue University: West Lafayette, IN

- Major concentration in American Literature.
- Minor concentration in Education.
- Special focus on popular culture.

Bachelor of Arts in English: May 2000

SUNY Geneseo: Geneseo, NY

- Minor in Medieval Studies.
- Special focus in Teaching and the Humanities.

References: Upon Request

SIRDN was founded in 2016 in the wake of the first Trump election in cooperation with the Workers Center of Central New York and the Syracuse Peace Council as a vehicle to support immigrant communities that would be targeted by the regime. This support took, and continues to take, a number of forms, including

- rapid response to assist affected persons caught in ICE's operations;
- direct support for at risk individuals and families including providing rides, food delivery, accompaniment to court or check-in appoints among many others
- Advocacy for policies that will protect immigrants and their families and ensure their welfare in our community

As just one example of this advocacy, SIRDN worked closely with allied organizations to ultimately help pass New York's "Green Light" law in 2019 that allowed all New Yorkers, regardless of immigration or citizenship status, to obtain driver's licenses, a law that both increased public safety while further welcoming immigrants into our communities.

During the pandemic, the Rapid Response team transitioned to providing direct support to those in lockdown, providing for the necessities of some of our most vulnerable neighbors while they navigated not just the dangers of COVID but also their safety in our country.

SIRDN has seen rapid growth since the 2024 election, along with a diversification of our work assisting immigrant communities. This includes:

- Fundraising for local organizations that seek to help immigrant communities;
- A public facing component to raise awareness about threats posed by the regime and express our concerns through protests and actions;
- Education campaigns to spread awareness through "Know Your Rights" training, Neighborhood Watch, and how to report ICE sightings
- Support for those in detention who are often difficult to locate

SIRDN is made up of a diverse group of people from all walks of life, but united in our commitment to resist effort to target and harm our immigrant neighbors, families and friends. Our most fundamental principle, though, is to listen to affected people who are themselves best situated to know what they need and then do our best to help however we can.

Policy: Make Onondaga a Fourth Amendment County

The Fourth Amendment protects everyone in our community from illegal and dangerous actions by the federal government. Federal law enforcement officers from across the country, with no connection to Onondaga County, are policing our streets and arresting our neighbors, often without warrants or probable cause. In other cities we have seen federal immigration agents are illegally entering private businesses and residences without identifying themselves, arresting and assaulting citizens for exercising their First and Second Amendment rights and clashing with peaceful protestors. This lawlessness and violence has no place in our County.

Federal immigration enforcement operations threaten community members and put local law enforcement in the crossfire. Federal agents rarely inform local law enforcement of their activities, creating potentially dangerous situations for community members and local law enforcement alike.

Unscrupulous actors can easily impersonate federal law enforcement or local law enforcement may be misidentified as federal law enforcement. We are asking the Onondaga County Legislature and Ryan McMahon to do everything in your power to protect our community and preserve the rule of law by making our county a Fourth Amendment County.

We can:

- Require a judicial warrant for federal law enforcement on county property and county buildings.
- Require federal law enforcement to inform local law enforcement of any enforcement operations.
- Require all law enforcement officers to clearly identify themselves with their name, badge number, and agency.
- Prohibit the use of face masks or disguises in enforcement operations unless necessary to protect officer physical safety (such as gas masks in a drug enforcement raid).
- Create a task force to inform local businesses, organizations, and communities of their constitutional rights under the fourth amendment.

February 3, 2026

Motion Made By Mr. Eriksen

RESOLUTION NO. 10

A RESOLUTION CALLING A PUBLIC HEARING IN CONNECTION WITH THE OAK ORCHARD INDUSTRIAL SEWER DISTRICT WITHIN THE ONONDAGA COUNTY CONSOLIDATED SANITARY DISTRICT

WHEREAS, by Resolution 172-2025 of the Onondaga County Legislature, the Onondaga County Department of Water Environment Protection (“WEP”) was directed to and has prepared a map proposing to create an industrial wastewater overlay district within the County’s Consolidated Sanitary District (the “Oak Orchard Industrial Sewer District”); and

WHEREAS, pursuant to the Onondaga County Administrative Code, the Commissioner of WEP duly noticed and subsequently held a public hearing on January 8, 2026, on the map creating the Oak Orchard Industrial Sewer District; and

WHEREAS, the Commissioner of WEP has submitted to this Legislature the map and a report dated January 8, 2026, duly approved by the County Executive, in connection with the creation of the Oak Orchard Industrial Sewer District, of which both the map and report are on file with the Clerk of the Legislature; and

WHEREAS, it is now desired to call a public hearing in connection therewith in accordance with the provisions of the Onondaga County Administrative Code; now, therefore be it

RESOLVED, that this County Legislature hold a public hearing on creation of the Oak Orchard Industrial Sewer District in the manner and upon the notice prescribed by the pertinent sections of the County Law, and for the purpose called for by said provisions of law, said public hearing to be held at the Legislative Chambers, Fourth Floor of the Court House in Syracuse, New York on the 17th day of February 2026, at 12:00 P.M. for the purpose of conducting a public hearing upon the aforesaid matter, and that the Clerk of the County Legislature is hereby authorized and directed to cause a notice of such public hearing to be published at least ten (10) days prior to the date of the public hearing in the official newspaper of the County of Onondaga, pursuant to law.

ADOPTED 2/3/2026



I hereby certify that the foregoing is a true and exact copy of the legislation duly adopted by the County Legislature of Onondaga County on the 3rd day of February 2026.

A handwritten signature in blue ink, appearing to read "Adams", is written over a horizontal line.

Clerk, County Legislature

December 2, 2025

Motion Made by Ms. Abbott

RESOLUTION NO. 172

RESOLUTION DESIGNATING THE ONONDAGA COUNTY DEPARTMENT OF WATER ENVIRONMENT PROTECTION AS THE RESPONSIBLE AGENCY FOR ESTABLISHING AN INDUSTRIAL WASTEWATER DISTRICT AND DIRECTING THE ONONDAGA COUNTY DEPARTMENT OF WATER ENVIRONMENT PROTECTION TO PREPARE MAPS AND PLANS FOR SUCH DISTRICT

WHEREAS, the Onondaga County Department of Water Environment Protection oversees the sewers and wastewater disposal for large segments of the County; and

WHEREAS, the Charter and Code for the County allows the Onondaga County Department of Water Environment Protection to establish new wastewater districts; and

WHEREAS, Onondaga County is anticipating unprecedented industrial development; and

WHEREAS, the wastewater disposal needs of an industrial user vary from the needs of a municipal user such that a special industrial wastewater district will be necessary for the growth of the community; and

WHEREAS, the Onondaga County Department of Water Environment Protection is the agency most experienced in wastewater disposal and is capable of developing maps and plans for such district; now, therefore be it

RESOLVED, that the Legislature designates the Onondaga County Department of Water Environment Protection as the responsible agency for purposes of establishing an Industrial Wastewater Disposal District; and, be it further

RESOLVED, that the Legislature directs the Onondaga County Department of Water Environment Protection to prepare maps and plans for such Industrial Wastewater Disposal District.

ADOPTED 12/2/2025



I hereby certify that the foregoing is a true and exact copy of the legislation duly adopted by the County Legislature of Onondaga County on the 2nd day of December 2025.

A handwritten signature in black ink, appearing to be "J. M. [unclear]", is written over a horizontal line.

Clerk, County Legislature

**DECEMBER 2, 2025
SESSION**

No. 172

LEGISLATORS

AYES:

NOES:

ABSENT:

EXCUSED:

30

17. HERNANDEZ

1. MAY

7. ROMEO

8. FIATO

9. HARVEY

10. OLSON

✓

11. McCARRON

12. KNAPP

13. BUSH

14. KELLY

15. BROWN

16. GARLAND

2. MEAKER

4. GUNNIP

5. CODY

6. ABBOTT

3. BURTIS

TOTAL:

16

0

1

0

*The meeting was
adjourned at 1:50 p.m.*



Oak Orchard Industrial Sewer District Formation

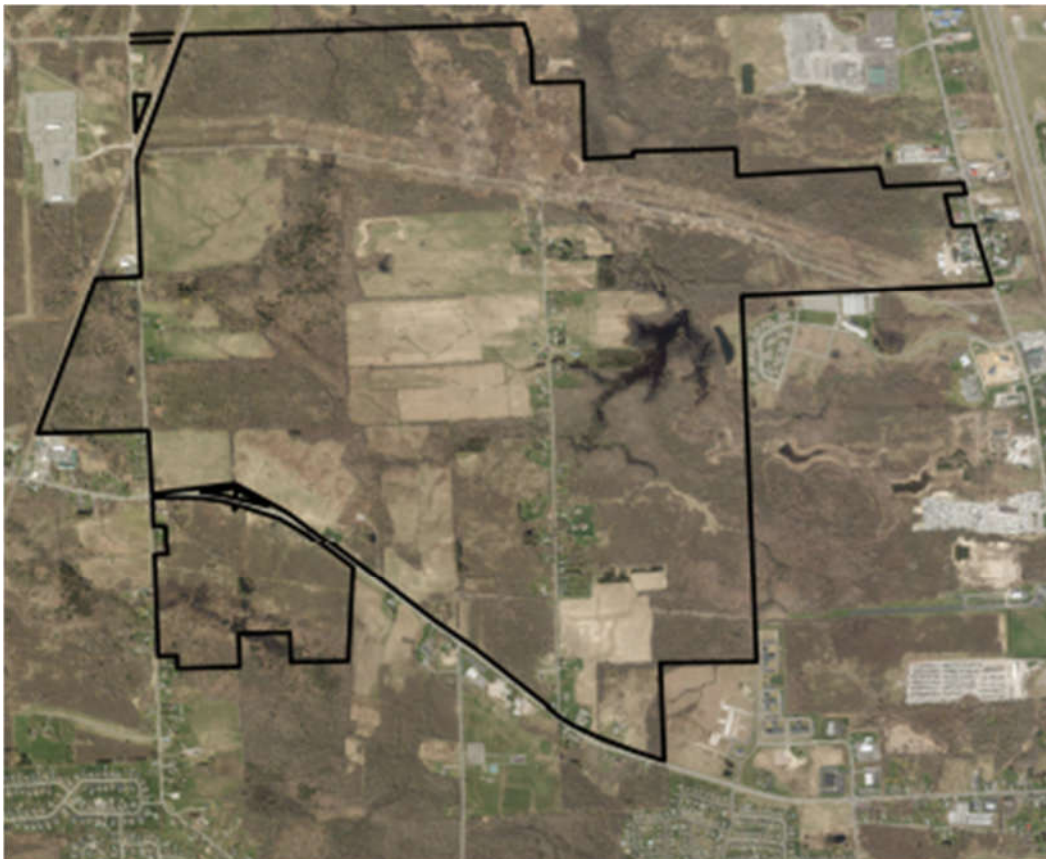
Map Plan and Report

Service Area(s): Oak Orchard WWTP

Prepared by: Casey Ganley

Prepared for: Onondaga County Legislature

Date Prepared: December 22nd, 2025



1. Executive Summary

The Oak Orchard Industrial Sewer District Formation is a legal and legislative process by which the County is creating a new sewer district (District) for an industrial user for the purposes of risk management, revenue recovery, and regulatory compliance. The District generally encompasses the White Pine Industrial Park, White Pine Commerce Park, and an Industrial Conveyance corridor between Caughdenoy Rd. and Oak Orchard WWTP. This District formation does not have a monetary component or impact to existing users within the Consolidated Sanitary District (CSD), therefore net impact to sewer users is **\$0.00 per unit per year**.

2. Project Timeline

The Oak Orchard Industrial Sewer District Formation was started in Q4-2025 and will be presented to the County Legislature during the planned February 2026 Full Session for review and adoption. Once adopted by the Legislature, the District will formally be created and ready to function when user(s) within the District begin discharging sewer to the to-be-completed Oak Orchard Industrial Wastewater Treatment Plant.

Table 1 – Major Project Milestone Schedule

Project Milestone	Target Date
District Formation Report Developed	December 2025
Presentation to Onondaga County Legislature	February 2026
District Formation	3 months

3. Project Location and District Overview

The District location and proximity to Oak Orchard WWTP is included in Figure 1 to this Report. The District is generally comprised of land owned by the Onondaga County Industrial Development Agency in the vicinity of Caughdenoy Rd and Rt. 31. The Industrial Conveyance Corridor is located on the northern boundary of the District and traverses East-West from Caughdenoy Rd. to the existing Oak Orchard WWTP.

4. Technical Description

Creation of the District allows the County to protect system integrity, allocate costs to the primary District user, and meet regulatory obligations by imposing tailored operational, financial, and discharge controls on industrial users whose waste streams materially differ from typical residential sewage currently generated in Onondaga County CSD.

5. Project Budget

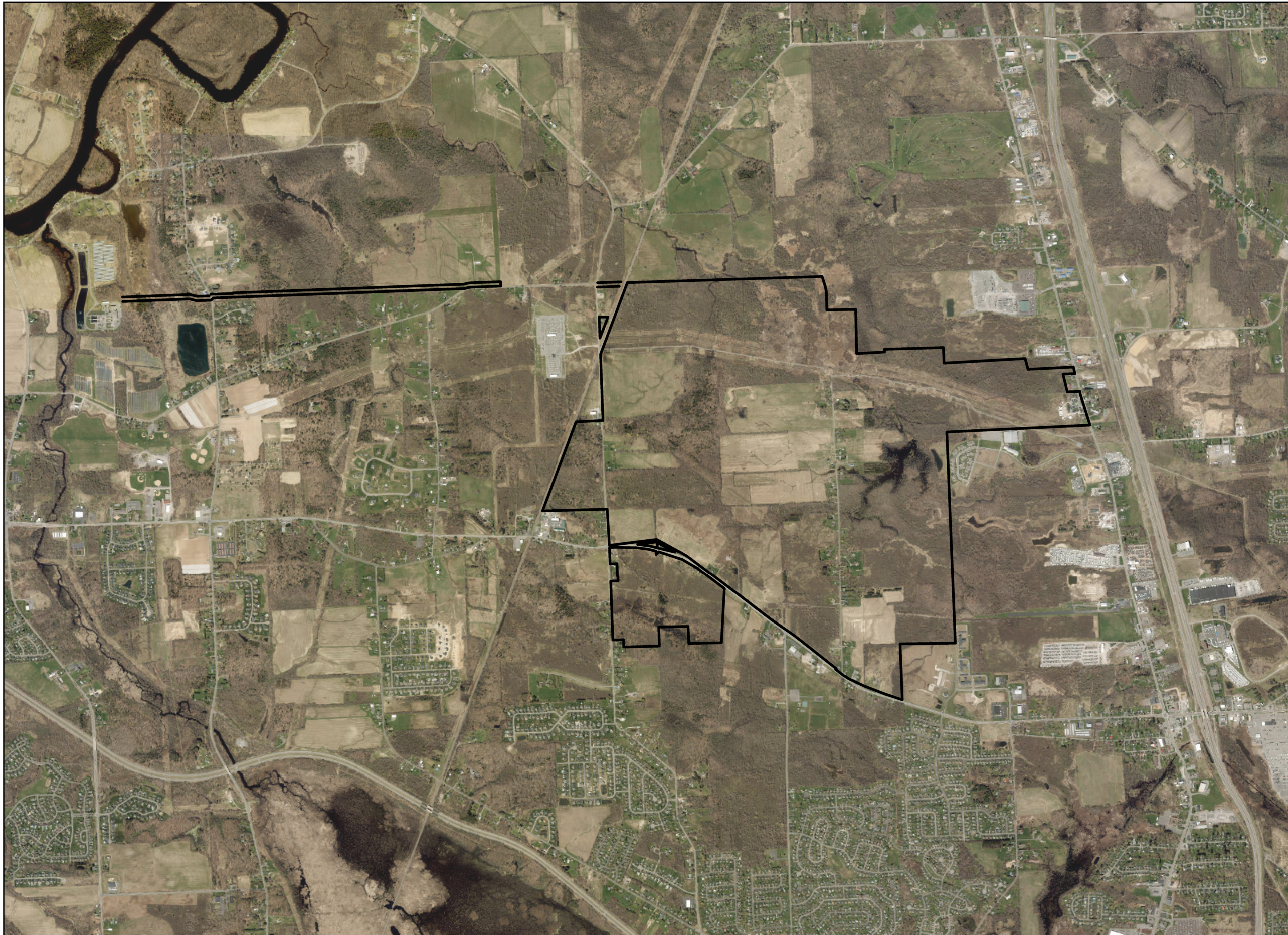
Formation of the District is a no-cost Legislative process; therefore no budget is allocated to this task.

6. User Cost Impact and Benefit Analysis

This District formation protects existing sewer customers within the CSD by ensuring that industries which place greater demands on the system pay their fair share, helping keep residential sewer rates stable while maintaining reliable, compliant sewer service for the community. Users of the existing CSD will see no change in rate structure due to this District Formation.

8. Environmental & Regulatory Compliance

The SEQR documents are included in Appendix A. The final determination yielded a result of “No Impacts or Small Impacts Which Can Be Mitigated”.

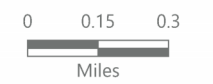


Micron / White Pine Special District Map

Town of Clay, Onondaga County,
New York

Legend

 Special District Boundary



Prepared December 22, 2025
Basemap: Esri "World Imagery" map service

APPENDIX A – SEQR DOCUMENTS

Project Impact Summary

To assist the Onondaga County Department of Water Environment Protection (OCDWEP) and the Town of Clay in their review of the proposed formation of a special district in accordance with the State Environmental Quality Review Act (SEQRA), the following summary of predicted impacts is provided. This summary supplements Part 2 of the Full Environmental Assessment Form (FEAF) and serves as Part 3 in accordance with SEQRA. As the proposed action is administrative in nature, involving the creation of a district overlay no physical construction, land disturbance, or changes in land use are proposed as part of this action. Consequently, environmental impacts are anticipated to be negligible. Any future construction or infrastructure improvements associated with Industrial Treatment Technology (ITT) operations will undergo separate SEQRA review and permitting as required.

In response to the requirements of SEQRA, the Lead Agency (Town of Clay) must complete a statement containing rationale in support of their determination of significance (Part 3 of the FEAF). As documented in the FEAF, all of the Part 2 questions/answers indicate there will be no impact, or that only a small impact may occur. There are five questions for which the impact has been identified as potentially “small impact may occur.” These questions, with expanded impact summaries for each, are provided below.

7. Impact on Plants and Animals

Part I of the FEAF identified the presence of several protected or notable species in the vicinity of the proposed overlay district, including the pied-billed grebe (*Podilymbus podiceps*), Indiana bat (*Myotis sodalis*), sedge wren (*Cistothorus platensis*), lake sturgeon (*Acipenser fulvescens*), and bald eagle (*Haliaeetus leucocephalus*). However, the proposed action does not involve vegetation removal, habitat modification, changes to surface water or aquatic environments, or any other land-altering activities.

The overlay district is administrative in nature and does not authorize physical development or operational changes. As a result, the action will not cause direct, indirect, or cumulative impacts to wildlife species or their habitats. Any future actions with the potential to affect biological resources would undergo independent environmental review and regulatory consultation as required. No adverse impacts to plants or animals are anticipated.

10. Impact on Historic and Archeological Resources

b. The proposed action may occur wholly or partially within, or substantially contiguous to, an area designated as sensitive for archaeological sites on the NY State Historic Preservation Office (SHPO) archaeological site inventory.

The proposed action is located within or adjacent to an area identified as archaeologically sensitive on the New York State Historic Preservation Office (SHPO) inventory. The formation of the overlay district does not involve ground disturbance, excavation, demolition, or modification of existing structures.

No physical activities are proposed or authorized as part of this action. Accordingly, there is no potential for impacts to archaeological sites or historic resources. Should future development occur within the district, consultation with SHPO and compliance with cultural resource protection requirements would be required at that time. No adverse impacts to historic or archaeological resources are anticipated.

11. Impact on Open Space and Recreation

b. The proposed action may result in the loss of an area now used informally by the community as an open space resource.

The proposed action does not involve the acquisition or physical alteration of land used for open space or recreational purposes. Certain areas within the district may be used informally by the community as open space; however, the overlay district does not modify land ownership, public access, or permitted land uses.

The administrative nature of the action ensures that existing open space and recreational resources remain unaffected. Any future actions with the potential to alter such resources would be subject to separate environmental review. No adverse impacts to open space or recreational resources are anticipated.

16. Impact on Human Health

b. The proposed action is located within 1500 feet of a school, hospital, licensed day care center, group home, nursing home or retirement community.

The proposed overlay district is located within 1,500 feet of sensitive receptors, including The Cottages at Garden Grove, a licensed nursing home. The proposed action does not involve construction, emissions, traffic generation, noise, or other activities that could affect public health or safety.

The establishment of the overlay district is administrative in nature and does not introduce any conditions that would pose a risk to residents, staff, or visitors at nearby sensitive facilities. Any

future infrastructure improvements or industrial operations with the potential to affect human health would be subject to separate SEQRA review and applicable federal, state, and local health and safety regulations. Accordingly, no adverse impacts to human health are anticipated.

17. Consistency with Community Plans

b. The proposed action is inconsistent with local land use plans or zoning regulations.

The proposed action involves the establishment of an overlay district to accommodate the unique wastewater infrastructure needs associated with high-capacity industrial users. This overlay district modifies existing zoning regulations in a targeted manner, providing a regulatory and administrative framework specifically designed to support these industrial requirements while maintaining alignment with the broader goals of local land use planning.

The overlay district does not change underlying zoning classifications, permitted land uses, development intensity, or future land use patterns. Instead, it functions as a zoning mechanism to define a specific boundary for infrastructure dedicated to high-capacity industrial use. This approach ensures that infrastructure is effectively managed for its intended purpose without shifting responsibility to other users or altering overall land use policy.

By creating this overlay district, the proposed action supports community planning objectives while providing the necessary flexibility to meet the functional requirements of high-capacity industrial infrastructure. The impacts of this zoning modification are considered minimal and appropriately targeted.

No Impacts or Small Impacts Which Can Be Mitigated

As previously indicated, all other items, including Impacts on Land, Geological Features, Surface Water, Groundwater, Flooding, Air, Agricultural Land Resources, Aesthetic Resources, Critical Environmental Areas, Transportation, Energy, Noise, Odor, Light, and Growth and Character of Community or Neighborhood result in no (or small) impacts.

Full Environmental Assessment Form
Part 1 - Project and Setting

Instructions for Completing Part 1

Part 1 is to be completed by the applicant or project sponsor. Responses become part of the application for approval or funding, are subject to public review, and may be subject to further verification.

Complete Part 1 based on information currently available. If additional research or investigation would be needed to fully respond to any item, please answer as thoroughly as possible based on current information; indicate whether missing information does not exist, or is not reasonably available to the sponsor; and, when possible, generally describe work or studies which would be necessary to update or fully develop that information.

Applicants/sponsors must complete all items in Sections A & B. In Sections C, D & E, most items contain an initial question that must be answered either “Yes” or “No”. If the answer to the initial question is “Yes”, complete the sub-questions that follow. If the answer to the initial question is “No”, proceed to the next question. Section F allows the project sponsor to identify and attach any additional information. Section G requires the name and signature of the applicant or project sponsor to verify that the information contained in Part 1 is accurate and complete.

A. Project and Applicant/Sponsor Information.

Name of Action or Project:		
Project Location (describe, and attach a general location map):		
Brief Description of Proposed Action (include purpose or need):		
Name of Applicant/Sponsor:		Telephone:
		E-Mail:
Address:		
City/PO:	State:	Zip Code:
Project Contact (if not same as sponsor; give name and title/role):		Telephone:
		E-Mail:
Address:		
City/PO:	State:	Zip Code:
Property Owner (if not same as sponsor):		Telephone:
		E-Mail:
Address:		
City/PO:	State:	Zip Code:

B. Government Approvals

B. Government Approvals, Funding, or Sponsorship. (“Funding” includes grants, loans, tax relief, and any other forms of financial assistance.)

Government Entity	If Yes: Identify Agency and Approval(s) Required	Application Date (Actual or projected)
a. City Counsel, Town Board, or Village Board of Trustees <input type="checkbox"/> Yes <input type="checkbox"/> No		
b. City, Town or Village Planning Board or Commission <input type="checkbox"/> Yes <input type="checkbox"/> No		
c. City, Town or Village Zoning Board of Appeals <input type="checkbox"/> Yes <input type="checkbox"/> No		
d. Other local agencies <input type="checkbox"/> Yes <input type="checkbox"/> No		
e. County agencies <input type="checkbox"/> Yes <input type="checkbox"/> No		
f. Regional agencies <input type="checkbox"/> Yes <input type="checkbox"/> No		
g. State agencies <input type="checkbox"/> Yes <input type="checkbox"/> No		
h. Federal agencies <input type="checkbox"/> Yes <input type="checkbox"/> No		
<p>i. Coastal Resources.</p> <p><i>i.</i> Is the project site within a Coastal Area, or the waterfront area of a Designated Inland Waterway? <input type="checkbox"/> Yes <input type="checkbox"/> No</p> <p><i>ii.</i> Is the project site located in a community with an approved Local Waterfront Revitalization Program? <input type="checkbox"/> Yes <input type="checkbox"/> No</p> <p><i>iii.</i> Is the project site within a Coastal Erosion Hazard Area? <input type="checkbox"/> Yes <input type="checkbox"/> No</p>		

C. Planning and Zoning

C.1. Planning and zoning actions.

Will administrative or legislative adoption, or amendment of a plan, local law, ordinance, rule or regulation be the only approval(s) which must be granted to enable the proposed action to proceed? Yes No

- **If Yes**, complete sections C, F and G.
- **If No**, proceed to question C.2 and complete all remaining sections and questions in Part 1

C.2. Adopted land use plans.

a. Do any municipally- adopted (city, town, village or county) comprehensive land use plan(s) include the site where the proposed action would be located? Yes No

If Yes, does the comprehensive plan include specific recommendations for the site where the proposed action would be located? Yes No

b. Is the site of the proposed action within any local or regional special planning district (for example: Greenway; Brownfield Opportunity Area (BOA); designated State or Federal heritage area; watershed management plan; or other?) Yes No

If Yes, identify the plan(s):

c. Is the proposed action located wholly or partially within an area listed in an adopted municipal open space plan, or an adopted municipal farmland protection plan? Yes No

If Yes, identify the plan(s):

C.3. Zoning

a. Is the site of the proposed action located in a municipality with an adopted zoning law or ordinance. Yes No
If Yes, what is the zoning classification(s) including any applicable overlay district?

b. Is the use permitted or allowed by a special or conditional use permit? Yes No

c. Is a zoning change requested as part of the proposed action? Yes No

If Yes,

i. What is the proposed new zoning for the site? _____

C.4. Existing community services.

a. In what school district is the project site located? _____

b. What police or other public protection forces serve the project site?

c. Which fire protection and emergency medical services serve the project site?

d. What parks serve the project site?

D. Project Details

D.1. Proposed and Potential Development

a. What is the general nature of the proposed action (e.g., residential, industrial, commercial, recreational; if mixed, include all components)?

b. a. Total acreage of the site of the proposed action? _____ acres
b. Total acreage to be physically disturbed? _____ acres
c. Total acreage (project site and any contiguous properties) owned or controlled by the applicant or project sponsor? _____ acres

c. Is the proposed action an expansion of an existing project or use? Yes No
i. If Yes, what is the approximate percentage of the proposed expansion and identify the units (e.g., acres, miles, housing units, square feet)? % _____ Units: _____

d. Is the proposed action a subdivision, or does it include a subdivision? Yes No
If Yes,

i. Purpose or type of subdivision? (e.g., residential, industrial, commercial; if mixed, specify types)

ii. Is a cluster/conservation layout proposed? Yes No

iii. Number of lots proposed? _____

iv. Minimum and maximum proposed lot sizes? Minimum _____ Maximum _____

e. Will the proposed action be constructed in multiple phases? Yes No

i. If No, anticipated period of construction: _____ months

ii. If Yes:

- Total number of phases anticipated _____
- Anticipated commencement date of phase 1 (including demolition) _____ month _____ year
- Anticipated completion date of final phase _____ month _____ year

• Generally describe connections or relationships among phases, including any contingencies where progress of one phase may determine timing or duration of future phases: _____

f. Does the project include new residential uses? Yes No
 If Yes, show numbers of units proposed.

	<u>One Family</u>	<u>Two Family</u>	<u>Three Family</u>	<u>Multiple Family (four or more)</u>
Initial Phase	_____	_____	_____	_____
At completion	_____	_____	_____	_____
of all phases	_____	_____	_____	_____

g. Does the proposed action include new non-residential construction (including expansions)? Yes No
 If Yes,

i. Total number of structures _____

ii. Dimensions (in feet) of largest proposed structure: _____ height; _____ width; and _____ length

iii. Approximate extent of building space to be heated or cooled: _____ square feet

h. Does the proposed action include construction or other activities that will result in the impoundment of any liquids, such as creation of a water supply, reservoir, pond, lake, waste lagoon or other storage? Yes No
 If Yes,

i. Purpose of the impoundment: _____

ii. If a water impoundment, the principal source of the water: Ground water Surface water streams Other specify: _____

iii. If other than water, identify the type of impounded/contained liquids and their source.

iv. Approximate size of the proposed impoundment. Volume: _____ million gallons; surface area: _____ acres

v. Dimensions of the proposed dam or impounding structure: _____ height; _____ length

vi. Construction method/materials for the proposed dam or impounding structure (e.g., earth fill, rock, wood, concrete):

D.2. Project Operations

a. Does the proposed action include any excavation, mining, or dredging, during construction, operations, or both? Yes No
 (Not including general site preparation, grading or installation of utilities or foundations where all excavated materials will remain onsite)
 If Yes:

i. What is the purpose of the excavation or dredging? _____

ii. How much material (including rock, earth, sediments, etc.) is proposed to be removed from the site?

- Volume (specify tons or cubic yards): _____
- Over what duration of time? _____

iii. Describe nature and characteristics of materials to be excavated or dredged, and plans to use, manage or dispose of them.

iv. Will there be onsite dewatering or processing of excavated materials? Yes No
 If yes, describe. _____

v. What is the total area to be dredged or excavated? _____ acres

vi. What is the maximum area to be worked at any one time? _____ acres

vii. What would be the maximum depth of excavation or dredging? _____ feet

viii. Will the excavation require blasting? Yes No

ix. Summarize site reclamation goals and plan: _____

b. Would the proposed action cause or result in alteration of, increase or decrease in size of, or encroachment into any existing wetland, waterbody, shoreline, beach or adjacent area? Yes No
 If Yes:

i. Identify the wetland or waterbody which would be affected (by name, water index number, wetland map number or geographic description): _____

ii. Describe how the proposed action would affect that waterbody or wetland, e.g. excavation, fill, placement of structures, or alteration of channels, banks and shorelines. Indicate extent of activities, alterations and additions in square feet or acres:

iii. Will the proposed action cause or result in disturbance to bottom sediments? Yes No

If Yes, describe: _____

iv. Will the proposed action cause or result in the destruction or removal of aquatic vegetation? Yes No

If Yes:

- acres of aquatic vegetation proposed to be removed: _____
- expected acreage of aquatic vegetation remaining after project completion: _____
- purpose of proposed removal (e.g. beach clearing, invasive species control, boat access): _____
- proposed method of plant removal: _____
- if chemical/herbicide treatment will be used, specify product(s): _____

v. Describe any proposed reclamation/mitigation following disturbance: _____

c. Will the proposed action use, or create a new demand for water? Yes No

If Yes:

i. Total anticipated water usage/demand per day: _____ gallons/day

ii. Will the proposed action obtain water from an existing public water supply? Yes No

If Yes:

- Name of district or service area: _____
- Does the existing public water supply have capacity to serve the proposal? Yes No
- Is the project site in the existing district? Yes No
- Is expansion of the district needed? Yes No
- Do existing lines serve the project site? Yes No

iii. Will line extension within an existing district be necessary to supply the project? Yes No

If Yes:

- Describe extensions or capacity expansions proposed to serve this project: _____
- Source(s) of supply for the district: _____

iv. Is a new water supply district or service area proposed to be formed to serve the project site? Yes No

If Yes:

- Applicant/sponsor for new district: _____
- Date application submitted or anticipated: _____
- Proposed source(s) of supply for new district: _____

v. If a public water supply will not be used, describe plans to provide water supply for the project: _____

vi. If water supply will be from wells (public or private), what is the maximum pumping capacity: _____ gallons/minute.

d. Will the proposed action generate liquid wastes? Yes No

If Yes:

i. Total anticipated liquid waste generation per day: _____ gallons/day

ii. Nature of liquid wastes to be generated (e.g., sanitary wastewater, industrial; if combination, describe all components and approximate volumes or proportions of each): _____

iii. Will the proposed action use any existing public wastewater treatment facilities? Yes No

If Yes:

- Name of wastewater treatment plant to be used: _____
- Name of district: _____
- Does the existing wastewater treatment plant have capacity to serve the project? Yes No
- Is the project site in the existing district? Yes No
- Is expansion of the district needed? Yes No

• Do existing sewer lines serve the project site? Yes No
 • Will a line extension within an existing district be necessary to serve the project? Yes No
 If Yes:
 • Describe extensions or capacity expansions proposed to serve this project: _____

iv. Will a new wastewater (sewage) treatment district be formed to serve the project site? Yes No
 If Yes:
 • Applicant/sponsor for new district: _____
 • Date application submitted or anticipated: _____
 • What is the receiving water for the wastewater discharge? _____

v. If public facilities will not be used, describe plans to provide wastewater treatment for the project, including specifying proposed receiving water (name and classification if surface discharge or describe subsurface disposal plans):

vi. Describe any plans or designs to capture, recycle or reuse liquid waste: _____

e. Will the proposed action disturb more than one acre and create stormwater runoff, either from new point sources (i.e. ditches, pipes, swales, curbs, gutters or other concentrated flows of stormwater) or non-point source (i.e. sheet flow) during construction or post construction? Yes No
 If Yes:
 i. How much impervious surface will the project create in relation to total size of project parcel?
 _____ Square feet or _____ acres (impervious surface)
 _____ Square feet or _____ acres (parcel size)
 ii. Describe types of new point sources. _____

iii. Where will the stormwater runoff be directed (i.e. on-site stormwater management facility/structures, adjacent properties, groundwater, on-site surface water or off-site surface waters)?

 • If to surface waters, identify receiving water bodies or wetlands: _____

 • Will stormwater runoff flow to adjacent properties? Yes No

iv. Does the proposed plan minimize impervious surfaces, use pervious materials or collect and re-use stormwater? Yes No

f. Does the proposed action include, or will it use on-site, one or more sources of air emissions, including fuel combustion, waste incineration, or other processes or operations? Yes No
 If Yes, identify:
 i. Mobile sources during project operations (e.g., heavy equipment, fleet or delivery vehicles)

 ii. Stationary sources during construction (e.g., power generation, structural heating, batch plant, crushers)

 iii. Stationary sources during operations (e.g., process emissions, large boilers, electric generation)

g. Will any air emission sources named in D.2.f (above), require a NY State Air Registration, Air Facility Permit, or Federal Clean Air Act Title IV or Title V Permit? Yes No
 If Yes:
 i. Is the project site located in an Air quality non-attainment area? (Area routinely or periodically fails to meet ambient air quality standards for all or some parts of the year) Yes No
 ii. In addition to emissions as calculated in the application, the project will generate:
 • _____ Tons/year (short tons) of Carbon Dioxide (CO₂)
 • _____ Tons/year (short tons) of Nitrous Oxide (N₂O)
 • _____ Tons/year (short tons) of Perfluorocarbons (PFCs)
 • _____ Tons/year (short tons) of Sulfur Hexafluoride (SF₆)
 • _____ Tons/year (short tons) of Carbon Dioxide equivalent of Hydroflouorocarbons (HFCs)
 • _____ Tons/year (short tons) of Hazardous Air Pollutants (HAPs)

h. Will the proposed action generate or emit methane (including, but not limited to, sewage treatment plants, landfills, composting facilities)? Yes No

If Yes:

i. Estimate methane generation in tons/year (metric): _____

ii. Describe any methane capture, control or elimination measures included in project design (e.g., combustion to generate heat or electricity, flaring): _____

i. Will the proposed action result in the release of air pollutants from open-air operations or processes, such as quarry or landfill operations? Yes No

If Yes: Describe operations and nature of emissions (e.g., diesel exhaust, rock particulates/dust): _____

j. Will the proposed action result in a substantial increase in traffic above present levels or generate substantial new demand for transportation facilities or services? Yes No

If Yes:

i. When is the peak traffic expected (Check all that apply): Morning Evening Weekend
 Randomly between hours of _____ to _____.

ii. For commercial activities only, projected number of truck trips/day and type (e.g., semi trailers and dump trucks): _____

iii. Parking spaces: Existing _____ Proposed _____ Net increase/decrease _____

iv. Does the proposed action include any shared use parking? Yes No

v. If the proposed action includes any modification of existing roads, creation of new roads or change in existing access, describe: _____

vi. Are public/private transportation service(s) or facilities available within 1/2 mile of the proposed site? Yes No

vii. Will the proposed action include access to public transportation or accommodations for use of hybrid, electric or other alternative fueled vehicles? Yes No

viii. Will the proposed action include plans for pedestrian or bicycle accommodations for connections to existing pedestrian or bicycle routes? Yes No

k. Will the proposed action (for commercial or industrial projects only) generate new or additional demand for energy? Yes No

If Yes:

i. Estimate annual electricity demand during operation of the proposed action: _____

ii. Anticipated sources/suppliers of electricity for the project (e.g., on-site combustion, on-site renewable, via grid/local utility, or other): _____

iii. Will the proposed action require a new, or an upgrade, to an existing substation? Yes No

l. Hours of operation. Answer all items which apply.

<p>i. During Construction:</p> <ul style="list-style-type: none"> • Monday - Friday: _____ • Saturday: _____ • Sunday: _____ • Holidays: _____ 	<p>ii. During Operations:</p> <ul style="list-style-type: none"> • Monday - Friday: _____ • Saturday: _____ • Sunday: _____ • Holidays: _____
--	---

m. Will the proposed action produce noise that will exceed existing ambient noise levels during construction, operation, or both? Yes No
 If yes:
 i. Provide details including sources, time of day and duration:

ii. Will the proposed action remove existing natural barriers that could act as a noise barrier or screen? Yes No
 Describe: _____

n. Will the proposed action have outdoor lighting? Yes No
 If yes:
 i. Describe source(s), location(s), height of fixture(s), direction/aim, and proximity to nearest occupied structures:

ii. Will proposed action remove existing natural barriers that could act as a light barrier or screen? Yes No
 Describe: _____

o. Does the proposed action have the potential to produce odors for more than one hour per day? Yes No
 If Yes, describe possible sources, potential frequency and duration of odor emissions, and proximity to nearest occupied structures: _____

p. Will the proposed action include any bulk storage of petroleum (combined capacity of over 1,100 gallons) or chemical products 185 gallons in above ground storage or any amount in underground storage? Yes No
 If Yes:
 i. Product(s) to be stored _____
 ii. Volume(s) _____ per unit time _____ (e.g., month, year)
 iii. Generally, describe the proposed storage facilities: _____

q. Will the proposed action (commercial, industrial and recreational projects only) use pesticides (i.e., herbicides, insecticides) during construction or operation? Yes No
 If Yes:
 i. Describe proposed treatment(s):

ii. Will the proposed action use Integrated Pest Management Practices? Yes No

r. Will the proposed action (commercial or industrial projects only) involve or require the management or disposal of solid waste (excluding hazardous materials)? Yes No
 If Yes:
 i. Describe any solid waste(s) to be generated during construction or operation of the facility:
 • Construction: _____ tons per _____ (unit of time)
 • Operation : _____ tons per _____ (unit of time)
 ii. Describe any proposals for on-site minimization, recycling or reuse of materials to avoid disposal as solid waste:
 • Construction: _____

 • Operation: _____

 iii. Proposed disposal methods/facilities for solid waste generated on-site:
 • Construction: _____

 • Operation: _____

s. Does the proposed action include construction or modification of a solid waste management facility? Yes No
 If Yes:
 i. Type of management or handling of waste proposed for the site (e.g., recycling or transfer station, composting, landfill, or other disposal activities): _____
 ii. Anticipated rate of disposal/processing:
 • _____ Tons/month, if transfer or other non-combustion/thermal treatment, or
 • _____ Tons/hour, if combustion or thermal treatment
 iii. If landfill, anticipated site life: _____ years

t. Will the proposed action at the site involve the commercial generation, treatment, storage, or disposal of hazardous waste? Yes No
 If Yes:
 i. Name(s) of all hazardous wastes or constituents to be generated, handled or managed at facility: _____

 ii. Generally describe processes or activities involving hazardous wastes or constituents: _____

 iii. Specify amount to be handled or generated _____ tons/month
 iv. Describe any proposals for on-site minimization, recycling or reuse of hazardous constituents: _____

 v. Will any hazardous wastes be disposed at an existing offsite hazardous waste facility? Yes No
 If Yes: provide name and location of facility: _____

 If No: describe proposed management of any hazardous wastes which will not be sent to a hazardous waste facility:

E. Site and Setting of Proposed Action

E.1. Land uses on and surrounding the project site

a. Existing land uses.
 i. Check all uses that occur on, adjoining and near the project site.
 Urban Industrial Commercial Residential (suburban) Rural (non-farm)
 Forest Agriculture Aquatic Other (specify): _____
 ii. If mix of uses, generally describe:

b. Land uses and covertypes on the project site.

Land use or Covertypes	Current Acreage	Acreage After Project Completion	Change (Acres +/-)
• Roads, buildings, and other paved or impervious surfaces			
• Forested			
• Meadows, grasslands or brushlands (non-agricultural, including abandoned agricultural)			
• Agricultural (includes active orchards, field, greenhouse etc.)			
• Surface water features (lakes, ponds, streams, rivers, etc.)			
• Wetlands (freshwater or tidal)			
• Non-vegetated (bare rock, earth or fill)			
• Other Describe: _____ _____			

Not applicable as the proposed action is administrative in nature, involving the creation of a district overlay no physical construction, land disturbance, or changes in land use are proposed as part of this action.

c. Is the project site presently used by members of the community for public recreation? Yes No
i. If Yes: explain: _____

d. Are there any facilities serving children, the elderly, people with disabilities (e.g., schools, hospitals, licensed day care centers, or group homes) within 1500 feet of the project site? Yes No
If Yes,
i. Identify Facilities:

e. Does the project site contain an existing dam? Yes No
If Yes:
i. Dimensions of the dam and impoundment:

- Dam height: _____ feet
- Dam length: _____ feet
- Surface area: _____ acres
- Volume impounded: _____ gallons OR acre-feet

ii. Dam's existing hazard classification: _____
iii. Provide date and summarize results of last inspection:

f. Has the project site ever been used as a municipal, commercial or industrial solid waste management facility, or does the project site adjoin property which is now, or was at one time, used as a solid waste management facility? Yes No
If Yes:
i. Has the facility been formally closed? Yes No

- If yes, cite sources/documentation: _____

ii. Describe the location of the project site relative to the boundaries of the solid waste management facility:

g. Have hazardous wastes been generated, treated and/or disposed of at the site, or does the project site adjoin property which is now or was at one time used to commercially treat, store and/or dispose of hazardous waste? Yes No
If Yes:
i. Describe waste(s) handled and waste management activities, including approximate time when activities occurred:

h. Potential contamination history. Has there been a reported spill at the proposed project site, or have any remedial actions been conducted at or adjacent to the proposed site? Yes No
If Yes:
i. Is any portion of the site listed on the NYSDEC Spills Incidents database or Environmental Site Remediation database? Check all that apply: Yes No
 Yes – Spills Incidents database Provide DEC ID number(s): _____
 Yes – Environmental Site Remediation database Provide DEC ID number(s): _____
 Neither database
ii. If site has been subject of RCRA corrective activities, describe control measures: _____

iii. Is the project within 2000 feet of any site in the NYSDEC Environmental Site Remediation database? Yes No
If yes, provide DEC ID number(s): _____
iv. If yes to (i), (ii) or (iii) above, describe current status of site(s):

v. Is the project site subject to an institutional control limiting property uses? Yes No

- If yes, DEC site ID number: _____
- Describe the type of institutional control (e.g., deed restriction or easement): _____
- Describe any use limitations: _____
- Describe any engineering controls: _____
- Will the project affect the institutional or engineering controls in place? Yes No
- Explain: _____

E.2. Natural Resources On or Near Project Site

a. What is the average depth to bedrock on the project site? _____ feet

b. Are there bedrock outcroppings on the project site? Yes No
 If Yes, what proportion of the site is comprised of bedrock outcroppings? _____%

c. Predominant soil type(s) present on project site: _____ %
 _____ %
 _____ %

d. What is the average depth to the water table on the project site? Average: _____ feet

e. Drainage status of project site soils: Well Drained: _____ % of site
 Moderately Well Drained: _____ % of site
 Poorly Drained _____ % of site

f. Approximate proportion of proposed action site with slopes: 0-10%: _____ % of site
 10-15%: _____ % of site
 15% or greater: _____ % of site

g. Are there any unique geologic features on the project site? Yes No
 If Yes, describe: _____

h. Surface water features.

i. Does any portion of the project site contain wetlands or other waterbodies (including streams, rivers, ponds or lakes)? Yes No

ii. Do any wetlands or other waterbodies adjoin the project site? Yes No
 If Yes to either *i* or *ii*, continue. If No, skip to E.2.i.

iii. Are any of the wetlands or waterbodies within or adjoining the project site regulated by any federal, state or local agency? Yes No

iv. For each identified regulated wetland and waterbody on the project site, provide the following information:

- Streams: Name _____ Classification _____
- Lakes or Ponds: Name _____ Classification _____
- Wetlands: Name _____ Approximate Size _____
- Wetland No. (if regulated by DEC) _____

v. Are any of the above water bodies listed in the most recent compilation of NYS water quality-impaired waterbodies? Yes No
 If yes, name of impaired water body/bodies and basis for listing as impaired: _____

i. Is the project site in a designated Floodway? Yes No

j. Is the project site in the 100-year Floodplain? Yes No

k. Is the project site in the 500-year Floodplain? Yes No

l. Is the project site located over, or immediately adjoining, a primary, principal or sole source aquifer? Yes No
 If Yes:
 i. Name of aquifer: _____

m. Identify the predominant wildlife species that occupy or use the project site: _____ _____ _____	
n. Does the project site contain a designated significant natural community? <input type="checkbox"/> Yes <input type="checkbox"/> No If Yes: <i>i.</i> Describe the habitat/community (composition, function, and basis for designation): _____ _____ <i>ii.</i> Source(s) of description or evaluation: _____ <i>iii.</i> Extent of community/habitat: <ul style="list-style-type: none"> • Currently: _____ acres • Following completion of project as proposed: _____ acres • Gain or loss (indicate + or -): _____ acres 	
o. Does project site contain any species of plant or animal that is listed by the federal government or NYS as endangered or threatened, or does it contain any areas identified as habitat for an endangered or threatened species? <input type="checkbox"/> Yes <input type="checkbox"/> No If Yes: <i>i.</i> Species and listing (endangered or threatened): _____ _____ _____	
p. Does the project site contain any species of plant or animal that is listed by NYS as rare, or as a species of special concern? <input type="checkbox"/> Yes <input type="checkbox"/> No If Yes: <i>i.</i> Species and listing: _____ _____	
q. Is the project site or adjoining area currently used for hunting, trapping, fishing or shell fishing? <input type="checkbox"/> Yes <input type="checkbox"/> No If yes, give a brief description of how the proposed action may affect that use: _____ _____	
E.3. Designated Public Resources On or Near Project Site	
a. Is the project site, or any portion of it, located in a designated agricultural district certified pursuant to Agriculture and Markets Law, Article 25-AA, Section 303 and 304? <input type="checkbox"/> Yes <input type="checkbox"/> No If Yes, provide county plus district name/number: _____	
b. Are agricultural lands consisting of highly productive soils present? <input type="checkbox"/> Yes <input type="checkbox"/> No <i>i.</i> If Yes: acreage(s) on project site? _____ <i>ii.</i> Source(s) of soil rating(s): _____	
c. Does the project site contain all or part of, or is it substantially contiguous to, a registered National Natural Landmark? <input type="checkbox"/> Yes <input type="checkbox"/> No If Yes: <i>i.</i> Nature of the natural landmark: <input type="checkbox"/> Biological Community <input type="checkbox"/> Geological Feature <i>ii.</i> Provide brief description of landmark, including values behind designation and approximate size/extent: _____ _____ _____	
d. Is the project site located in or does it adjoin a state listed Critical Environmental Area? <input type="checkbox"/> Yes <input type="checkbox"/> No If Yes: <i>i.</i> CEA name: _____ <i>ii.</i> Basis for designation: _____ <i>iii.</i> Designating agency and date: _____	

e. Does the project site contain, or is it substantially contiguous to, a building, archaeological site, or district which is listed on the National or State Register of Historic Places, or that has been determined by the Commissioner of the NYS Office of Parks, Recreation and Historic Preservation to be eligible for listing on the State Register of Historic Places? Yes No
 If Yes:
 i. Nature of historic/archaeological resource: Archaeological Site Historic Building or District
 ii. Name: _____
 iii. Brief description of attributes on which listing is based: _____

f. Is the project site, or any portion of it, located in or adjacent to an area designated as sensitive for archaeological sites on the NY State Historic Preservation Office (SHPO) archaeological site inventory? Yes No

g. Have additional archaeological or historic site(s) or resources been identified on the project site? Yes No
 If Yes:
 i. Describe possible resource(s): The proposed action is administrative in nature, see Part III Narrative for more information.
 ii. Basis for identification: _____

h. Is the project site within five miles of any officially designated and publicly accessible federal, state, or local scenic or aesthetic resource? Yes No
 If Yes:
 i. Identify resource: _____
 ii. Nature of, or basis for, designation (e.g., established highway overlook, state or local park, state historic trail or scenic byway, etc.): _____
 iii. Distance between project and resource: _____ miles.

i. Is the project site located within a designated river corridor under the Wild, Scenic and Recreational Rivers Program 6 NYCRR 666? Yes No
 If Yes:
 i. Identify the name of the river and its designation: _____
 ii. Is the activity consistent with development restrictions contained in 6NYCRR Part 666? Yes No

F. Additional Information

Attach any additional information which may be needed to clarify your project.

If you have identified any adverse impacts which could be associated with your proposal, please describe those impacts plus any measures which you propose to avoid or minimize them.

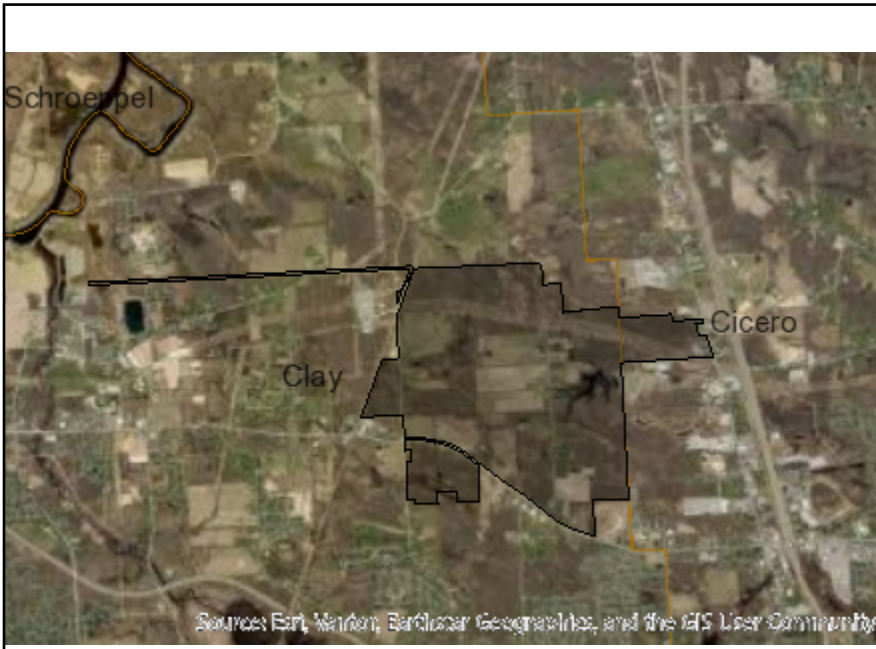
G. Verification

I certify that the information provided is true to the best of my knowledge.

Applicant/Sponsor Name ODEAN D. DYER Date 12.23.25

Signature  Title COMMISSIONER

PRINT FORM



Disclaimer: The EAF Mapper is a screening tool intended to assist project sponsors and reviewing agencies in preparing an environmental assessment form (EAF). Not all questions asked in the EAF are answered by the EAF Mapper. Additional information on any EAF question can be obtained by consulting the EAF Workbooks. Although the EAF Mapper provides the most up-to-date digital data available to DEC, you may also need to contact local or other data sources to confirm data provided by the Mapper or to obtain data not provided by the Mapper.



B.i.i [Coastal or Waterfront Area]	No
B.i.ii [Local Waterfront Revitalization Area]	Yes
C.2.b. [Special Planning District]	Digital mapping data are not available or are incomplete. Refer to EAF Workbook.
E.1.h [DEC Spills or Remediation Site - Potential Contamination History]	Digital mapping data are not available or are incomplete. Refer to EAF Workbook.
E.1.h.i [DEC Spills or Remediation Site - Listed]	Digital mapping data are not available or are incomplete. Refer to EAF Workbook.
E.1.h.i [DEC Spills or Remediation Site - Environmental Site Remediation Database]	Digital mapping data are not available or are incomplete. Refer to EAF Workbook.
E.1.h.iii [Within 2,000' of DEC Remediation Site]	No
E.2.g [Unique Geologic Features]	No
E.2.h.i [Surface Water Features]	Yes - Digital mapping information on local, New York State, and federal wetlands and waterbodies is known to be incomplete. Refer to the EAF Workbook.
E.2.h.ii [Surface Water Features]	Yes - Digital mapping information on local, New York State, and federal wetlands and waterbodies is known to be incomplete. Refer to the EAF Workbook.
E.2.h.iii [Surface Water Features]	Yes - Digital mapping information on local, New York State, and federal wetlands and waterbodies is known to be incomplete. Refer to the EAF Workbook.
E.2.h.iv [Surface Water Features - Stream Name]	899-10
E.2.h.iv [Surface Water Features - Stream Classification]	C
E.2.h.iv [Surface Water Features - Wetlands Name]	Federal Waters
E.2.h.v [Impaired Water Bodies]	No

E.2.i. [Floodway]	No
E.2.j. [100 Year Floodplain]	No
E.2.k. [500 Year Floodplain]	No
E.2.l. [Aquifers]	No
E.2.n. [Natural Communities]	No
E.2.o. [Endangered or Threatened Species]	Yes
E.2.o. [Endangered or Threatened Species - Name]	Pied-billed Grebe, Indiana Bat, Sedge Wren, Lake Sturgeon, Bald Eagle
E.2.p. [Rare Plants or Animals]	No
E.3.a. [Agricultural District]	Yes
E.3.a. [Agricultural District]	ONON003
E.3.c. [National Natural Landmark]	No
E.3.d [Critical Environmental Area]	No
E.3.e. [National or State Register of Historic Places or State Eligible Sites]	Digital mapping data are not available or are incomplete. Refer to EAF Workbook.
E.3.f. [Archeological Sites]	Yes
E.3.i. [Designated River Corridor]	No

Full Environmental Assessment Form
Part 2 - Identification of Potential Project Impacts

Project :

Date :

Part 2 is to be completed by the lead agency. Part 2 is designed to help the lead agency inventory all potential resources that could be affected by a proposed project or action. We recognize that the lead agency’s reviewer(s) will not necessarily be environmental professionals. So, the questions are designed to walk a reviewer through the assessment process by providing a series of questions that can be answered using the information found in Part 1. To further assist the lead agency in completing Part 2, the form identifies the most relevant questions in Part 1 that will provide the information needed to answer the Part 2 question. When Part 2 is completed, the lead agency will have identified the relevant environmental areas that may be impacted by the proposed activity.

If the lead agency is a state agency **and** the action is in any Coastal Area, complete the Coastal Assessment Form before proceeding with this assessment.

Tips for completing Part 2:

- Review all of the information provided in Part 1.
- Review any application, maps, supporting materials and the Full EAF Workbook.
- Answer each of the 18 questions in Part 2.
- If you answer “**Yes**” to a numbered question, please complete all the questions that follow in that section.
- If you answer “**No**” to a numbered question, move on to the next numbered question.
- Check appropriate column to indicate the anticipated size of the impact.
- Proposed projects that would exceed a numeric threshold contained in a question should result in the reviewing agency checking the box “Moderate to large impact may occur.”
- The reviewer is not expected to be an expert in environmental analysis.
- If you are not sure or undecided about the size of an impact, it may help to review the sub-questions for the general question and consult the workbook.
- When answering a question consider all components of the proposed activity, that is, the “whole action”.
- Consider the possibility for long-term and cumulative impacts as well as direct impacts.
- Answer the question in a reasonable manner considering the scale and context of the project.

1. Impact on Land			
Proposed action may involve construction on, or physical alteration of, the land surface of the proposed site. (See Part 1. D.1)		<input type="checkbox"/> NO	<input type="checkbox"/> YES
<i>If “Yes”, answer questions a - j. If “No”, move on to Section 2.</i>			
	Relevant Part I Question(s)	No, or small impact may occur	Moderate to large impact may occur
a. The proposed action may involve construction on land where depth to water table is less than 3 feet.	E2d	<input type="checkbox"/>	<input type="checkbox"/>
b. The proposed action may involve construction on slopes of 15% or greater.	E2f	<input type="checkbox"/>	<input type="checkbox"/>
c. The proposed action may involve construction on land where bedrock is exposed, or generally within 5 feet of existing ground surface.	E2a	<input type="checkbox"/>	<input type="checkbox"/>
d. The proposed action may involve the excavation and removal of more than 1,000 tons of natural material.	D2a	<input type="checkbox"/>	<input type="checkbox"/>
e. The proposed action may involve construction that continues for more than one year or in multiple phases.	D1e	<input type="checkbox"/>	<input type="checkbox"/>
f. The proposed action may result in increased erosion, whether from physical disturbance or vegetation removal (including from treatment by herbicides).	D2e, D2q	<input type="checkbox"/>	<input type="checkbox"/>
g. The proposed action is, or may be, located within a Coastal Erosion hazard area.	B1i	<input type="checkbox"/>	<input type="checkbox"/>
h. Other impacts: _____ _____		<input type="checkbox"/>	<input type="checkbox"/>

2. Impact on Geological Features The proposed action may result in the modification or destruction of, or inhibit access to, any unique or unusual land forms on the site (e.g., cliffs, dunes, minerals, fossils, caves). (See Part 1. E.2.g) <input type="checkbox"/> NO <input type="checkbox"/> YES <i>If "Yes", answer questions a - c. If "No", move on to Section 3.</i>			
	Relevant Part I Question(s)	No, or small impact may occur	Moderate to large impact may occur
a. Identify the specific land form(s) attached: _____ _____	E2g	<input type="checkbox"/>	<input type="checkbox"/>
b. The proposed action may affect or is adjacent to a geological feature listed as a registered National Natural Landmark. Specific feature: _____	E3c	<input type="checkbox"/>	<input type="checkbox"/>
c. Other impacts: _____ _____		<input type="checkbox"/>	<input type="checkbox"/>

3. Impacts on Surface Water The proposed action may affect one or more wetlands or other surface water bodies (e.g., streams, rivers, ponds or lakes). (See Part 1. D.2, E.2.h) <input type="checkbox"/> NO <input type="checkbox"/> YES <i>If "Yes", answer questions a - l. If "No", move on to Section 4.</i>			
	Relevant Part I Question(s)	No, or small impact may occur	Moderate to large impact may occur
a. The proposed action may create a new water body.	D2b, D1h	<input type="checkbox"/>	<input type="checkbox"/>
b. The proposed action may result in an increase or decrease of over 10% or more than a 10 acre increase or decrease in the surface area of any body of water.	D2b	<input type="checkbox"/>	<input type="checkbox"/>
c. The proposed action may involve dredging more than 100 cubic yards of material from a wetland or water body.	D2a	<input type="checkbox"/>	<input type="checkbox"/>
d. The proposed action may involve construction within or adjoining a freshwater or tidal wetland, or in the bed or banks of any other water body.	E2h	<input type="checkbox"/>	<input type="checkbox"/>
e. The proposed action may create turbidity in a waterbody, either from upland erosion, runoff or by disturbing bottom sediments.	D2a, D2h	<input type="checkbox"/>	<input type="checkbox"/>
f. The proposed action may include construction of one or more intake(s) for withdrawal of water from surface water.	D2c	<input type="checkbox"/>	<input type="checkbox"/>
g. The proposed action may include construction of one or more outfall(s) for discharge of wastewater to surface water(s).	D2d	<input type="checkbox"/>	<input type="checkbox"/>
h. The proposed action may cause soil erosion, or otherwise create a source of stormwater discharge that may lead to siltation or other degradation of receiving water bodies.	D2e	<input type="checkbox"/>	<input type="checkbox"/>
i. The proposed action may affect the water quality of any water bodies within or downstream of the site of the proposed action.	E2h	<input type="checkbox"/>	<input type="checkbox"/>
j. The proposed action may involve the application of pesticides or herbicides in or around any water body.	D2q, E2h	<input type="checkbox"/>	<input type="checkbox"/>
k. The proposed action may require the construction of new, or expansion of existing, wastewater treatment facilities.	D1a, D2d	<input type="checkbox"/>	<input type="checkbox"/>

I. Other impacts: _____ _____		<input type="checkbox"/>	<input type="checkbox"/>
----------------------------------	--	--------------------------	--------------------------

4. Impact on groundwater The proposed action may result in new or additional use of ground water, or may have the potential to introduce contaminants to ground water or an aquifer. <input type="checkbox"/> NO <input type="checkbox"/> YES (See Part 1. D.2.a, D.2.c, D.2.d, D.2.p, D.2.q, D.2.t) <i>If "Yes", answer questions a - h. If "No", move on to Section 5.</i>			
	Relevant Part I Question(s)	No, or small impact may occur	Moderate to large impact may occur
a. The proposed action may require new water supply wells, or create additional demand on supplies from existing water supply wells.	D2c	<input type="checkbox"/>	<input type="checkbox"/>
b. Water supply demand from the proposed action may exceed safe and sustainable withdrawal capacity rate of the local supply or aquifer. Cite Source: _____	D2c	<input type="checkbox"/>	<input type="checkbox"/>
c. The proposed action may allow or result in residential uses in areas without water and sewer services.	D1a, D2c	<input type="checkbox"/>	<input type="checkbox"/>
d. The proposed action may include or require wastewater discharged to groundwater.	D2d, E2l	<input type="checkbox"/>	<input type="checkbox"/>
e. The proposed action may result in the construction of water supply wells in locations where groundwater is, or is suspected to be, contaminated.	D2c, E1f, E1g, E1h	<input type="checkbox"/>	<input type="checkbox"/>
f. The proposed action may require the bulk storage of petroleum or chemical products over ground water or an aquifer.	D2p, E2l	<input type="checkbox"/>	<input type="checkbox"/>
g. The proposed action may involve the commercial application of pesticides within 100 feet of potable drinking water or irrigation sources.	E2h, D2q, E2l, D2c	<input type="checkbox"/>	<input type="checkbox"/>
h. Other impacts: _____ _____		<input type="checkbox"/>	<input type="checkbox"/>

5. Impact on Flooding The proposed action may result in development on lands subject to flooding. <input type="checkbox"/> NO <input type="checkbox"/> YES (See Part 1. E.2) <i>If "Yes", answer questions a - g. If "No", move on to Section 6.</i>			
	Relevant Part I Question(s)	No, or small impact may occur	Moderate to large impact may occur
a. The proposed action may result in development in a designated floodway.	E2i	<input type="checkbox"/>	<input type="checkbox"/>
b. The proposed action may result in development within a 100 year floodplain.	E2j	<input type="checkbox"/>	<input type="checkbox"/>
c. The proposed action may result in development within a 500 year floodplain.	E2k	<input type="checkbox"/>	<input type="checkbox"/>
d. The proposed action may result in, or require, modification of existing drainage patterns.	D2b, D2e	<input type="checkbox"/>	<input type="checkbox"/>
e. The proposed action may change flood water flows that contribute to flooding.	D2b, E2i, E2j, E2k	<input type="checkbox"/>	<input type="checkbox"/>
f. If there is a dam located on the site of the proposed action, is the dam in need of repair, or upgrade?	E1e	<input type="checkbox"/>	<input type="checkbox"/>

g. Other impacts: _____ _____		<input type="checkbox"/>	<input type="checkbox"/>
----------------------------------	--	--------------------------	--------------------------

6. Impacts on Air			
The proposed action may include a state regulated air emission source. (See Part 1. D.2.f., D.2.h, D.2.g) <i>If "Yes", answer questions a - f. If "No", move on to Section 7.</i>		<input type="checkbox"/> NO	<input type="checkbox"/> YES
	Relevant Part I Question(s)	No, or small impact may occur	Moderate to large impact may occur
a. If the proposed action requires federal or state air emission permits, the action may also emit one or more greenhouse gases at or above the following levels: i. More than 1000 tons/year of carbon dioxide (CO ₂) ii. More than 3.5 tons/year of nitrous oxide (N ₂ O) iii. More than 1000 tons/year of carbon equivalent of perfluorocarbons (PFCs) iv. More than .045 tons/year of sulfur hexafluoride (SF ₆) v. More than 1000 tons/year of carbon dioxide equivalent of hydrochloroflourocarbons (HFCs) emissions vi. 43 tons/year or more of methane	D2g D2g D2g D2g D2g D2h	<input type="checkbox"/> <input type="checkbox"/> <input type="checkbox"/> <input type="checkbox"/> <input type="checkbox"/> <input type="checkbox"/>	<input type="checkbox"/> <input type="checkbox"/> <input type="checkbox"/> <input type="checkbox"/> <input type="checkbox"/> <input type="checkbox"/>
b. The proposed action may generate 10 tons/year or more of any one designated hazardous air pollutant, or 25 tons/year or more of any combination of such hazardous air pollutants.	D2g	<input type="checkbox"/>	<input type="checkbox"/>
c. The proposed action may require a state air registration, or may produce an emissions rate of total contaminants that may exceed 5 lbs. per hour, or may include a heat source capable of producing more than 10 million BTU's per hour.	D2f, D2g	<input type="checkbox"/>	<input type="checkbox"/>
d. The proposed action may reach 50% of any of the thresholds in "a" through "c", above.	D2g	<input type="checkbox"/>	<input type="checkbox"/>
e. The proposed action may result in the combustion or thermal treatment of more than 1 ton of refuse per hour.	D2s	<input type="checkbox"/>	<input type="checkbox"/>
f. Other impacts: _____ _____		<input type="checkbox"/>	<input type="checkbox"/>

7. Impact on Plants and Animals			
The proposed action may result in a loss of flora or fauna. (See Part 1. E.2. m.-q.) <i>If "Yes", answer questions a - j. If "No", move on to Section 8.</i>		<input type="checkbox"/> NO	<input type="checkbox"/> YES
	Relevant Part I Question(s)	No, or small impact may occur	Moderate to large impact may occur
a. The proposed action may cause reduction in population or loss of individuals of any threatened or endangered species, as listed by New York State or the Federal government, that use the site, or are found on, over, or near the site.	E2o	<input type="checkbox"/>	<input type="checkbox"/>
b. The proposed action may result in a reduction or degradation of any habitat used by any rare, threatened or endangered species, as listed by New York State or the federal government.	E2o	<input type="checkbox"/>	<input type="checkbox"/>
c. The proposed action may cause reduction in population, or loss of individuals, of any species of special concern or conservation need, as listed by New York State or the Federal government, that use the site, or are found on, over, or near the site.	E2p	<input type="checkbox"/>	<input type="checkbox"/>
d. The proposed action may result in a reduction or degradation of any habitat used by any species of special concern and conservation need, as listed by New York State or the Federal government.	E2p	<input type="checkbox"/>	<input type="checkbox"/>

e. The proposed action may diminish the capacity of a registered National Natural Landmark to support the biological community it was established to protect.	E3c	<input type="checkbox"/>	<input type="checkbox"/>
f. The proposed action may result in the removal of, or ground disturbance in, any portion of a designated significant natural community. Source: _____	E2n	<input type="checkbox"/>	<input type="checkbox"/>
g. The proposed action may substantially interfere with nesting/breeding, foraging, or over-wintering habitat for the predominant species that occupy or use the project site.	E2m	<input type="checkbox"/>	<input type="checkbox"/>
h. The proposed action requires the conversion of more than 10 acres of forest, grassland or any other regionally or locally important habitat. Habitat type & information source: _____	E1b	<input type="checkbox"/>	<input type="checkbox"/>
i. Proposed action (commercial, industrial or recreational projects, only) involves use of herbicides or pesticides.	D2q	<input type="checkbox"/>	<input type="checkbox"/>
j. Other impacts: _____		<input type="checkbox"/>	<input type="checkbox"/>

8. Impact on Agricultural Resources			
The proposed action may impact agricultural resources. (See Part 1. E.3.a. and b.)		<input type="checkbox"/> NO	<input type="checkbox"/> YES
<i>If "Yes", answer questions a - h. If "No", move on to Section 9.</i>			
	Relevant Part I Question(s)	No, or small impact may occur	Moderate to large impact may occur
a. The proposed action may impact soil classified within soil group 1 through 4 of the NYS Land Classification System.	E2c, E3b	<input type="checkbox"/>	<input type="checkbox"/>
b. The proposed action may sever, cross or otherwise limit access to agricultural land (includes cropland, hayfields, pasture, vineyard, orchard, etc).	E1a, E1b	<input type="checkbox"/>	<input type="checkbox"/>
c. The proposed action may result in the excavation or compaction of the soil profile of active agricultural land.	E3b	<input type="checkbox"/>	<input type="checkbox"/>
d. The proposed action may irreversibly convert agricultural land to non-agricultural uses, either more than 2.5 acres if located in an Agricultural District, or more than 10 acres if not within an Agricultural District.	E1b, E3a	<input type="checkbox"/>	<input type="checkbox"/>
e. The proposed action may disrupt or prevent installation of an agricultural land management system.	E1 a, E1b	<input type="checkbox"/>	<input type="checkbox"/>
f. The proposed action may result, directly or indirectly, in increased development potential or pressure on farmland.	C2c, C3, D2c, D2d	<input type="checkbox"/>	<input type="checkbox"/>
g. The proposed project is not consistent with the adopted municipal Farmland Protection Plan.	C2c	<input type="checkbox"/>	<input type="checkbox"/>
h. Other impacts: _____		<input type="checkbox"/>	<input type="checkbox"/>

9. Impact on Aesthetic Resources The land use of the proposed action are obviously different from, or are in sharp contrast to, current land use patterns between the proposed project and a scenic or aesthetic resource. (Part 1. E.1.a, E.1.b, E.3.h.) <i>If "Yes", answer questions a - g. If "No", go to Section 10.</i>				<input type="checkbox"/> NO	<input type="checkbox"/> YES
	Relevant Part I Question(s)	No, or small impact may occur	Moderate to large impact may occur		
a. Proposed action may be visible from any officially designated federal, state, or local scenic or aesthetic resource.	E3h	<input type="checkbox"/>	<input type="checkbox"/>		
b. The proposed action may result in the obstruction, elimination or significant screening of one or more officially designated scenic views.	E3h, C2b	<input type="checkbox"/>	<input type="checkbox"/>		
c. The proposed action may be visible from publicly accessible vantage points: i. Seasonally (e.g., screened by summer foliage, but visible during other seasons) ii. Year round	E3h	<input type="checkbox"/> <input type="checkbox"/>	<input type="checkbox"/> <input type="checkbox"/>		
d. The situation or activity in which viewers are engaged while viewing the proposed action is: i. Routine travel by residents, including travel to and from work ii. Recreational or tourism based activities	E3h E2q, E1c	<input type="checkbox"/> <input type="checkbox"/>	<input type="checkbox"/> <input type="checkbox"/>		
e. The proposed action may cause a diminishment of the public enjoyment and appreciation of the designated aesthetic resource.	E3h	<input type="checkbox"/>	<input type="checkbox"/>		
f. There are similar projects visible within the following distance of the proposed project: 0-1/2 mile 1/2 -3 mile 3-5 mile 5+ mile	D1a, E1a, D1f, D1g	<input type="checkbox"/>	<input type="checkbox"/>		
g. Other impacts: _____ _____		<input type="checkbox"/>	<input type="checkbox"/>		

10. Impact on Historic and Archeological Resources The proposed action may occur in or adjacent to a historic or archaeological resource. (Part 1. E.3.e, f. and g.) <i>If "Yes", answer questions a - e. If "No", go to Section 11.</i>				<input type="checkbox"/> NO	<input type="checkbox"/> YES
	Relevant Part I Question(s)	No, or small impact may occur	Moderate to large impact may occur		
a. The proposed action may occur wholly or partially within, or substantially contiguous to, any buildings, archaeological site or district which is listed on the National or State Register of Historical Places, or that has been determined by the Commissioner of the NYS Office of Parks, Recreation and Historic Preservation to be eligible for listing on the State Register of Historic Places.	E3e	<input type="checkbox"/>	<input type="checkbox"/>		
b. The proposed action may occur wholly or partially within, or substantially contiguous to, an area designated as sensitive for archaeological sites on the NY State Historic Preservation Office (SHPO) archaeological site inventory.	E3f	<input type="checkbox"/>	<input type="checkbox"/>		
c. The proposed action may occur wholly or partially within, or substantially contiguous to, an archaeological site not included on the NY SHPO inventory. Source: _____	E3g	<input type="checkbox"/>	<input type="checkbox"/>		

d. Other impacts: _____ _____		<input type="checkbox"/>	<input type="checkbox"/>
e. If any of the above (a-d) are answered “Moderate to large impact may occur”, continue with the following questions to help support conclusions in Part 3:			
i. The proposed action may result in the destruction or alteration of all or part of the site or property.	E3e, E3g, E3f	<input type="checkbox"/>	<input type="checkbox"/>
ii. The proposed action may result in the alteration of the property’s setting or integrity.	E3e, E3f, E3g, E1a, E1b	<input type="checkbox"/>	<input type="checkbox"/>
iii. The proposed action may result in the introduction of visual elements which are out of character with the site or property, or may alter its setting.	E3e, E3f, E3g, E3h, C2, C3	<input type="checkbox"/>	<input type="checkbox"/>

11. Impact on Open Space and Recreation			
The proposed action may result in a loss of recreational opportunities or a reduction of an open space resource as designated in any adopted municipal open space plan. (See Part 1. C.2.c, E.1.c., E.2.q.) <i>If “Yes”, answer questions a - e. If “No”, go to Section 12.</i>		<input type="checkbox"/> NO	<input type="checkbox"/> YES
	Relevant Part I Question(s)	No, or small impact may occur	Moderate to large impact may occur
a. The proposed action may result in an impairment of natural functions, or “ecosystem services”, provided by an undeveloped area, including but not limited to stormwater storage, nutrient cycling, wildlife habitat.	D2e, E1b E2h, E2m, E2o, E2n, E2p	<input type="checkbox"/>	<input type="checkbox"/>
b. The proposed action may result in the loss of a current or future recreational resource.	C2a, E1c, C2c, E2q	<input type="checkbox"/>	<input type="checkbox"/>
c. The proposed action may eliminate open space or recreational resource in an area with few such resources.	C2a, C2c E1c, E2q	<input type="checkbox"/>	<input type="checkbox"/>
d. The proposed action may result in loss of an area now used informally by the community as an open space resource.	C2c, E1c	<input type="checkbox"/>	<input type="checkbox"/>
e. Other impacts: _____ _____		<input type="checkbox"/>	<input type="checkbox"/>

12. Impact on Critical Environmental Areas			
The proposed action may be located within or adjacent to a critical environmental area (CEA). (See Part 1. E.3.d) <i>If “Yes”, answer questions a - c. If “No”, go to Section 13.</i>		<input type="checkbox"/> NO	<input type="checkbox"/> YES
	Relevant Part I Question(s)	No, or small impact may occur	Moderate to large impact may occur
a. The proposed action may result in a reduction in the quantity of the resource or characteristic which was the basis for designation of the CEA.	E3d	<input type="checkbox"/>	<input type="checkbox"/>
b. The proposed action may result in a reduction in the quality of the resource or characteristic which was the basis for designation of the CEA.	E3d	<input type="checkbox"/>	<input type="checkbox"/>
c. Other impacts: _____ _____		<input type="checkbox"/>	<input type="checkbox"/>

13. Impact on Transportation The proposed action may result in a change to existing transportation systems. <input type="checkbox"/> NO <input type="checkbox"/> YES (See Part 1. D.2.j) <i>If "Yes", answer questions a - f. If "No", go to Section 14.</i>			
	Relevant Part I Question(s)	No, or small impact may occur	Moderate to large impact may occur
a. Projected traffic increase may exceed capacity of existing road network.	D2j	<input type="checkbox"/>	<input type="checkbox"/>
b. The proposed action may result in the construction of paved parking area for 500 or more vehicles.	D2j	<input type="checkbox"/>	<input type="checkbox"/>
c. The proposed action will degrade existing transit access.	D2j	<input type="checkbox"/>	<input type="checkbox"/>
d. The proposed action will degrade existing pedestrian or bicycle accommodations.	D2j	<input type="checkbox"/>	<input type="checkbox"/>
e. The proposed action may alter the present pattern of movement of people or goods.	D2j	<input type="checkbox"/>	<input type="checkbox"/>
f. Other impacts: _____ _____		<input type="checkbox"/>	<input type="checkbox"/>

14. Impact on Energy The proposed action may cause an increase in the use of any form of energy. <input type="checkbox"/> NO <input type="checkbox"/> YES (See Part 1. D.2.k) <i>If "Yes", answer questions a - e. If "No", go to Section 15.</i>			
	Relevant Part I Question(s)	No, or small impact may occur	Moderate to large impact may occur
a. The proposed action will require a new, or an upgrade to an existing, substation.	D2k	<input type="checkbox"/>	<input type="checkbox"/>
b. The proposed action will require the creation or extension of an energy transmission or supply system to serve more than 50 single or two-family residences or to serve a commercial or industrial use.	D1f, D1q, D2k	<input type="checkbox"/>	<input type="checkbox"/>
c. The proposed action may utilize more than 2,500 MWhrs per year of electricity.	D2k	<input type="checkbox"/>	<input type="checkbox"/>
d. The proposed action may involve heating and/or cooling of more than 100,000 square feet of building area when completed.	D1g	<input type="checkbox"/>	<input type="checkbox"/>
e. Other Impacts: _____ _____			

15. Impact on Noise, Odor, and Light The proposed action may result in an increase in noise, odors, or outdoor lighting. <input type="checkbox"/> NO <input type="checkbox"/> YES (See Part 1. D.2.m., n., and o.) <i>If "Yes", answer questions a - f. If "No", go to Section 16.</i>			
	Relevant Part I Question(s)	No, or small impact may occur	Moderate to large impact may occur
a. The proposed action may produce sound above noise levels established by local regulation.	D2m	<input type="checkbox"/>	<input type="checkbox"/>
b. The proposed action may result in blasting within 1,500 feet of any residence, hospital, school, licensed day care center, or nursing home.	D2m, E1d	<input type="checkbox"/>	<input type="checkbox"/>
c. The proposed action may result in routine odors for more than one hour per day.	D2o	<input type="checkbox"/>	<input type="checkbox"/>

d. The proposed action may result in light shining onto adjoining properties.	D2n	<input type="checkbox"/>	<input type="checkbox"/>
e. The proposed action may result in lighting creating sky-glow brighter than existing area conditions.	D2n, E1a	<input type="checkbox"/>	<input type="checkbox"/>
f. Other impacts: _____ _____		<input type="checkbox"/>	<input type="checkbox"/>

16. Impact on Human Health			
The proposed action may have an impact on human health from exposure to new or existing sources of contaminants. (See Part 1.D.2.q., E.1. d. f. g. and h.) <i>If "Yes", answer questions a - m. If "No", go to Section 17.</i>		<input type="checkbox"/> NO	<input type="checkbox"/> YES
	Relevant Part I Question(s)	No, or small impact may occur	Moderate to large impact may occur
a. The proposed action is located within 1500 feet of a school, hospital, licensed day care center, group home, nursing home or retirement community.	E1d	<input type="checkbox"/>	<input type="checkbox"/>
b. The site of the proposed action is currently undergoing remediation.	E1g, E1h	<input type="checkbox"/>	<input type="checkbox"/>
c. There is a completed emergency spill remediation, or a completed environmental site remediation on, or adjacent to, the site of the proposed action.	E1g, E1h	<input type="checkbox"/>	<input type="checkbox"/>
d. The site of the action is subject to an institutional control limiting the use of the property (e.g., easement or deed restriction).	E1g, E1h	<input type="checkbox"/>	<input type="checkbox"/>
e. The proposed action may affect institutional control measures that were put in place to ensure that the site remains protective of the environment and human health.	E1g, E1h	<input type="checkbox"/>	<input type="checkbox"/>
f. The proposed action has adequate control measures in place to ensure that future generation, treatment and/or disposal of hazardous wastes will be protective of the environment and human health.	D2t	<input type="checkbox"/>	<input type="checkbox"/>
g. The proposed action involves construction or modification of a solid waste management facility.	D2q, E1f	<input type="checkbox"/>	<input type="checkbox"/>
h. The proposed action may result in the unearthing of solid or hazardous waste.	D2q, E1f	<input type="checkbox"/>	<input type="checkbox"/>
i. The proposed action may result in an increase in the rate of disposal, or processing, of solid waste.	D2r, D2s	<input type="checkbox"/>	<input type="checkbox"/>
j. The proposed action may result in excavation or other disturbance within 2000 feet of a site used for the disposal of solid or hazardous waste.	E1f, E1g E1h	<input type="checkbox"/>	<input type="checkbox"/>
k. The proposed action may result in the migration of explosive gases from a landfill site to adjacent off site structures.	E1f, E1g	<input type="checkbox"/>	<input type="checkbox"/>
l. The proposed action may result in the release of contaminated leachate from the project site.	D2s, E1f, D2r	<input type="checkbox"/>	<input type="checkbox"/>
m. Other impacts: _____ _____			

17. Consistency with Community Plans			
The proposed action is not consistent with adopted land use plans. (See Part 1. C.1, C.2. and C.3.) <i>If “Yes”, answer questions a - h. If “No”, go to Section 18.</i>		<input type="checkbox"/> NO	<input type="checkbox"/> YES
	Relevant Part I Question(s)	No, or small impact may occur	Moderate to large impact may occur
a. The proposed action’s land use components may be different from, or in sharp contrast to, current surrounding land use pattern(s).	C2, C3, D1a E1a, E1b	<input type="checkbox"/>	<input type="checkbox"/>
b. The proposed action will cause the permanent population of the city, town or village in which the project is located to grow by more than 5%.	C2	<input type="checkbox"/>	<input type="checkbox"/>
c. The proposed action is inconsistent with local land use plans or zoning regulations.	C2, C2, C3	<input type="checkbox"/>	<input type="checkbox"/>
d. The proposed action is inconsistent with any County plans, or other regional land use plans.	C2, C2	<input type="checkbox"/>	<input type="checkbox"/>
e. The proposed action may cause a change in the density of development that is not supported by existing infrastructure or is distant from existing infrastructure.	C3, D1c, D1d, D1f, D1d, E1b	<input type="checkbox"/>	<input type="checkbox"/>
f. The proposed action is located in an area characterized by low density development that will require new or expanded public infrastructure.	C4, D2c, D2d D2j	<input type="checkbox"/>	<input type="checkbox"/>
g. The proposed action may induce secondary development impacts (e.g., residential or commercial development not included in the proposed action)	C2a	<input type="checkbox"/>	<input type="checkbox"/>
h. Other: _____ _____		<input type="checkbox"/>	<input type="checkbox"/>

18. Consistency with Community Character			
The proposed project is inconsistent with the existing community character. (See Part 1. C.2, C.3, D.2, E.3) <i>If “Yes”, answer questions a - g. If “No”, proceed to Part 3.</i>		<input type="checkbox"/> NO	<input type="checkbox"/> YES
	Relevant Part I Question(s)	No, or small impact may occur	Moderate to large impact may occur
a. The proposed action may replace or eliminate existing facilities, structures, or areas of historic importance to the community.	E3e, E3f, E3g	<input type="checkbox"/>	<input type="checkbox"/>
b. The proposed action may create a demand for additional community services (e.g. schools, police and fire)	C4	<input type="checkbox"/>	<input type="checkbox"/>
c. The proposed action may displace affordable or low-income housing in an area where there is a shortage of such housing.	C2, C3, D1f D1g, E1a	<input type="checkbox"/>	<input type="checkbox"/>
d. The proposed action may interfere with the use or enjoyment of officially recognized or designated public resources.	C2, E3	<input type="checkbox"/>	<input type="checkbox"/>
e. The proposed action is inconsistent with the predominant architectural scale and character.	C2, C3	<input type="checkbox"/>	<input type="checkbox"/>
f. Proposed action is inconsistent with the character of the existing natural landscape.	C2, C3 E1a, E1b E2g, E2h	<input type="checkbox"/>	<input type="checkbox"/>
g. Other impacts: _____ _____		<input type="checkbox"/>	<input type="checkbox"/>

Project :

Date :

Full Environmental Assessment Form
Part 3 - Evaluation of the Magnitude and Importance of Project Impacts
and
Determination of Significance

Part 3 provides the reasons in support of the determination of significance. The lead agency must complete Part 3 for every question in Part 2 where the impact has been identified as potentially moderate to large or where there is a need to explain why a particular element of the proposed action will not, or may, result in a significant adverse environmental impact.

Based on the analysis in Part 3, the lead agency must decide whether to require an environmental impact statement to further assess the proposed action or whether available information is sufficient for the lead agency to conclude that the proposed action will not have a significant adverse environmental impact. By completing the certification on the next page, the lead agency can complete its determination of significance.

Reasons Supporting This Determination:

To complete this section:

- Identify the impact based on the Part 2 responses and describe its magnitude. Magnitude considers factors such as severity, size or extent of an impact.
- Assess the importance of the impact. Importance relates to the geographic scope, duration, probability of the impact occurring, number of people affected by the impact and any additional environmental consequences if the impact were to occur.
- The assessment should take into consideration any design element or project changes.
- Repeat this process for each Part 2 question where the impact has been identified as potentially moderate to large or where there is a need to explain why a particular element of the proposed action will not, or may, result in a significant adverse environmental impact.
- Provide the reason(s) why the impact may, or will not, result in a significant adverse environmental impact
- For Conditional Negative Declarations identify the specific condition(s) imposed that will modify the proposed action so that no significant adverse environmental impacts will result.
- Attach additional sheets, as needed.

Determination of Significance - Type 1 and Unlisted Actions

SEQR Status: Type 1 Unlisted

Identify portions of EAF completed for this Project: Part 1 Part 2 Part 3

Upon review of the information recorded on this EAF, as noted, plus this additional support information

and considering both the magnitude and importance of each identified potential impact, it is the conclusion of the _____ as lead agency that:

A. This project will result in no significant adverse impacts on the environment, and, therefore, an environmental impact statement need not be prepared. Accordingly, this negative declaration is issued.

B. Although this project could have a significant adverse impact on the environment, that impact will be avoided or substantially mitigated because of the following conditions which will be required by the lead agency:

There will, therefore, be no significant adverse impacts from the project as conditioned, and, therefore, this conditioned negative declaration is issued. A conditioned negative declaration may be used only for UNLISTED actions (see 6 NYCRR 617.7(d)).

C. This Project may result in one or more significant adverse impacts on the environment, and an environmental impact statement must be prepared to further assess the impact(s) and possible mitigation and to explore alternatives to avoid or reduce those impacts. Accordingly, this positive declaration is issued.

Name of Action: Formation of a Special District

Name of Lead Agency: Onondaga County Department of Water Environment Protection

Name of Responsible Officer in Lead Agency: Odean Dyer

Title of Responsible Officer: Commissioner

Signature of Responsible Officer in Lead Agency:

Date: 12/23/25

Signature of Preparer (if different from Responsible Officer)

Date:

For Further Information:

Contact Person:

Address:

Telephone Number:

E-mail:

For Type 1 Actions and Conditioned Negative Declarations, a copy of this Notice is sent to:

Chief Executive Officer of the political subdivision in which the action will be principally located (e.g., Town / City / Village of)

Other involved agencies (if any)

Applicant (if any)

Environmental Notice Bulletin: <http://www.dec.ny.gov/enb/enb.html>

PRINT FULL FORM

**FEBRUARY 3, 2026
SESSION**

**MOTION FOR
RECESS**

LEGISLATORS	AYES:	NOES:	ABSENT:	EXCUSED:	1
1. MAY	✓				<p><i>Mr. McCarron made a motion to recess for five minutes, seconded by Mr. Garland.</i></p> <p><i>A vote was taken on the motion for recess.</i></p> <p><i>The motion PASSED.</i></p> <p><i>Session entered a five minute recess.</i></p>
2. MEAKER	✓				
3. BURTIS	✓				
4. THOMPSON	✓				
5. BLOCK			✓		
6. ERIKSEN	✓				
7. ROMEO	✓				
8. RYAN	✓				
10. DENTON	✓				
11. McCARRON	✓				
12. KNAPP	✓				
13. BUSH	✓				
14. KELLY	✓				
15. BROWN	✓				
16. GARLAND	✓				
17. HERNANDEZ	✓				
9. WATTS	✓				
TOTAL:	16	0	1	0	

**FEBRUARY 3, 2026
SESSION**

**MOTION TO
REFER TO
COMMITTEE**

LEGISLATORS	AYES:	NOES:	ABSENT:	EXCUSED:	1
1. MAY					<p><i>Mr. Brown motions to refer item one to the Ways and Means Committee, seconded by Ms. Hernandez.</i></p> <p><i>Mr. Brown withdraws his motion, seconded by Mr. May.</i></p>
2. MEAKER					
3. BURTIS					
4. THOMPSON					
5. BLOCK					
6. ERIKSEN					
7. ROMEO					
8. RYAN					
10. DENTON					
11. McCARRON					
12. KNAPP					
13. BUSH					
14. KELLY					
15. BROWN					
16. GARLAND					
17. HERNANDEZ					
9. WATTS					
TOTAL:					

**FEBRUARY 3, 2026
SESSION**

No. 10

LEGISLATORS	AYES:	NOES:	ABSENT:	EXCUSED:	1
1. MAY	✓				
2. MEAKER	✓				
3. BURTIS	✓				
4. THOMPSON	✓				
5. BLOCK			✓		
6. ERIKSEN	✓				
7. ROMEO	✓				
8. RYAN	✓				
10. DENTON	✓				
11. McCARRON	✓				
12. KNAPP	✓				
13. BUSH	✓				
14. KELLY	✓				
15. BROWN	✓				
16. GARLAND	✓				
17. HERNANDEZ	✓				
9. WATTS	✓				
TOTAL:	16	0	1	0	

February 3, 2026

Motion Made By Mr. Ryan

RESOLUTION NO. 11

AMENDING THE 2026 ONONDAGA COUNTY BUDGET TO ACCEPT GRANT FUNDS FROM THE NEW YORK STATE DORMITORY AUTHORITY'S COMMUNITY RESILIENCY, ECONOMIC SUSTAINABILITY, AND TECHNOLOGY PROGRAM

WHEREAS, the New York State Dormitory Authority has awarded the County of Onondaga funding pursuant to the Community Resiliency, Economic Sustainability, and Technology ("CREST") program in the amount of \$50,000 for the purchase of REACT snowplow blades; and

WHEREAS, REACT snowplow blades are advanced technology blades that utilize spring-loaded mechanisms to better conform snowplow blades to road slopes, contours, and surfaces to improve road clearing capabilities and decreasing salt usage; and

WHEREAS, it is necessary to include such funds in the Onondaga County Parks Department's 2026 budget and to authorize the execution of agreements; now, therefore be it

RESOLVED, that the County Executive is authorized to execute agreements and such other documents as may be reasonably necessary to implement the intent of this resolution; and, be it further

RESOLVED, that the 2026 County budget be amended as follows:

REVENUES

In Admin Unit 6900000000
Parks and Recreation Grants Project
Speed Type #510030
In Grants Project 770085001
React Snow Plow Blades
In Account 590024
State Aid-Transportation \$50,000

APPROPRIATIONS

A960 Appropriations
In Admin Unit 6900000000
Speed Type #510030
In Grants Project 770085001
React Snow Plow Blades
In Account 693000
Supplies and Materials \$50,000

ADOPTED 2/3/2026



I hereby certify that the foregoing is a true and exact copy of the legislation duly adopted by the County Legislature of Onondaga County on the 3rd day of February 2026.

Handwritten signature of the Clerk, County Legislature

Clerk, County Legislature



DEPARTMENT OF PARKS & RECREATION PROGRAM AND FINANCIAL INFORMATION SHEET

PURPOSE:

To amend the 2026 County budget to accept grant funding from the Community Resiliency, Economic Sustainability, and Technology Program ("CREST").

OBJECTIVE/ WORK PLAN:

This grant funding will support the purchase of REACT snowplow blades for use in County Parks. These advanced cutting blades are designed to attach to our existing plows and feature a spring-loaded mechanism that allows them to better conform to the slope and contours of the surface. Compared to traditional straight blades, REACT blades are expected to improve surface clearing efficiency, potentially reducing the number of passes required and decreasing salt usage.

FUNDING SOURCE:

Community Resiliency, Economic Sustainability, and Technology Program ("CREST").

BUDGET:

\$50,000

**FEBRUARY 3, 2026
SESSION**

No. 11

LEGISLATORS	AYES:	NOES:	ABSENT:	EXCUSED:	2
1. MAY	✓				
2. MEAKER	✓				
3. BURTIS	✓				
4. THOMPSON	✓				
5. BLOCK			✓		
6. ERIKSEN	✓				
7. ROMEO	✓				
8. RYAN	✓				
10. DENTON	✓				
11. McCARRON	✓				
12. KNAPP	✓				
13. BUSH	✓				
14. KELLY	✓				
15. BROWN	✓				
16. GARLAND	✓				
17. HERNANDEZ	✓				
9. WATTS	✓				
TOTAL:	16	0	1	0	

February 3, 2026

Motion Made by Mr. Ryan

RESOLUTION NO. 12

AMENDING THE 2026 ONONDAGA COUNTY BUDGET TO ACCEPT GRANT FUNDS FROM THE NEW YORK STATE OFFICE OF PARKS, RECREATION & HISTORIC PRESERVATION SNOWMOBILE PROGRAM

WHEREAS, the New York State Office of Parks, Recreation & Historic Preservation Snowmobile Program has awarded the County of Onondaga funding in an amount up to \$146,212 to support the maintenance of approved snowmobile trails within the County; and

WHEREAS, it is necessary to include such funds in the Onondaga County Parks Department's 2026 budget and to authorize the execution of agreements; now, therefore be it

RESOLVED, that the County Executive is authorized to execute agreements and such other documents as may be reasonably necessary to implement the intent of this resolution; and, be it further

RESOLVED, that the 2026 County budget be amended as follows:

REVENUES

In Admin Unit 6900000000
Parks and Recreation Grants Project
Speed Type #510030
In Grants Project 770068026
Snowmobile 2025/2026
In Account 590024
State Aid-Transportation \$46,212

APPROPRIATIONS

A960 Appropriations
In Admin Unit 6900000000
Speed Type #510030
In Grants Project 770068026
Snowmobile 2025/2026
In Account 694080
Professional Services \$46,212

ADOPTED 2/3/2026



I hereby certify that the foregoing is a true and exact copy of the legislation duly adopted by the County Legislature of Onondaga County on the 3rd day of February 2026.

Handwritten signature of Adams

Clerk, County Legislature



DEPARTMENT OF PARKS & RECREATION PROGRAM AND FINANCIAL INFORMATION SHEET

PURPOSE:

To amend the 2026 County budget to accept additional grant funding from the 2025 New York State Office of Parks, Recreation & Historic Preservation Snowmobile Program.

OBJECTIVE/ WORK PLAN:

This grant funding provides financial assistance for the maintenance of approved snowmobile trail miles within Onondaga County. All funded trails must provide access to any snowmobile currently registered in New York State.

FUNDING SOURCE:

2025-26 New York State Office of Parks, Recreation & Historic Preservation Snowmobile Program.

BUDGET:

\$46,212

**FEBRUARY 3, 2026
SESSION**

No. 12

LEGISLATORS	AYES:	NOES:	ABSENT:	EXCUSED:	3
1. MAY	✓				
2. MEAKER	✓				
3. BURTIS	✓				
4. THOMPSON	✓				
5. BLOCK			✓		
6. ERIKSEN	✓				
7. ROMEO	✓				
8. RYAN	✓				
10. DENTON	✓				
11. McCARRON	✓				
12. KNAPP	✓				
13. BUSH	✓				
14. KELLY	✓				
15. BROWN	✓				
16. GARLAND	✓				
17. HERNANDEZ	✓				
9. WATTS	✓				
TOTAL:	16	0	1	0	

February 3, 2026

Motion Made By Mr. Ryan

RESOLUTION NO. 13

PERSONNEL RESOLUTION

WHEREAS, it is necessary for the County to provide for various changes to personnel; now, therefore be it

RESOLVED, that the Onondaga County Salary Plan be amended to add the following title, effective the first full pay period after February 3, 2026:

Parks and Recreation Department (Admin Unit 69)

Create and fund Veterinarian at Grade 35 (\$92,698-\$122,887);

and, be it further

RESOLVED, that the Commissioner of Personnel is authorized to make any administrative corrections as may be reasonably needed to effectuate the intent of this resolution.

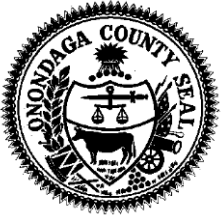
ADOPTED 2/3/2026



I hereby certify that the foregoing is a true and exact copy of the legislation duly adopted by the County Legislature of Onondaga County on the 3rd day of February 2026.

A handwritten signature in blue ink, appearing to read "Adams", is written over a horizontal line.

Clerk, County Legislature



DEPARTMENT PARKS PROGRAM AND FINANCIAL INFORMATION SHEET

PURPOSE:

To create a full time Zoo Veterinarian position at the Rosamond Gifford Zoo, to replace the contractual position partially funded in the past by the Friends of the Zoo.

OBJECTIVE/ WORK PLAN:

Create Veterinarian Grade 35

FUNDING SOURCE:

Parks 2026 Operating Budget

**FEBRUARY 3, 2026
SESSION**

No. 13

LEGISLATORS	AYES:	NOES:	ABSENT:	EXCUSED:	4
1. MAY	✓				
2. MEAKER	✓				
3. BURTIS	✓				
4. THOMPSON	✓				
5. BLOCK			✓		
6. ERIKSEN	✓				
7. ROMEO	✓				
8. RYAN	✓				
10. DENTON	✓				
11. McCARRON	✓				
12. KNAPP	✓				
13. BUSH	✓				
14. KELLY	✓				
15. BROWN	✓				
16. GARLAND	✓				
17. HERNANDEZ	✓				
9. WATTS	✓				
TOTAL:	16	0	1	0	

February 3, 2026

Motion Made By Mr. Ryan

RESOLUTION NO. 14

AUTHORIZING THE PURCHASE OF REAL PROPERTY LOCATED IN THE TOWNS OF GEDDES
AND ONONDAGA

WHEREAS, the New York State Department of Transportation (“NYSDOT”) has offered to sell real property to the County of Onondaga in the Towns of Geddes and Onondaga, known as Tax Map Nos. 049.-04-24.1 and 004.-03-17.1, respectively, totaling ± 3.21 acres (the “Property”); and

WHEREAS, in purchasing the Property, the County has agreed that the Property will remain forever wild and open to the public; and

WHEREAS, NYSDOT has offered to sell the Property to the County for one dollar (\$1.00); and

WHEREAS, the above amount is considered fair and reasonable; and

WHEREAS, an analysis of the potential environmental impacts of the proposed transfer of the Property, if any, has been undertaken pursuant to the New York State Environmental Quality Review Act (“SEQRA”); and

WHEREAS, pursuant to SEQRA, the County has classified the proposed action as an unlisted action, and based on the anticipated environmental impacts as set forth in the Short Environmental Assessment Form (“SEAF”), the County has made a preliminary determination that the proposed action will have no significant environmental impacts; now, therefore be it

RESOLVED, that this Legislature determines that the proposed action is an unlisted action; and, be it further

RESOLVED, that the SEAF for this proposed action has been prepared and reviewed and is on file with the Clerk of the Legislature; and, be it further

RESOLVED, that the SEAF is satisfactory with respect to scope, content, and adequacy in compliance with SEQRA, and is accepted by this Legislature; and, be it further

RESOLVED, that this Legislature accepts and adopts a Negative Declaration for the proposed action in accordance with Article 8 of the Environmental Conservation Law and 6 NYCRR Part 617, and has determined that the proposed action will not have a significant adverse effect on the environment; and, be it further

RESOLVED, that the Onondaga County Executive or his designee, is authorized to take such actions to comply with the requirements of SEQRA, including without limitation, the execution of documents and the filing, distribution and publication of the EAF and Negative Declaration, and any other actions to implement the intent of this resolution; and, be it further

RESOLVED, that the County Executive is hereby authorized to purchase the Property for a consideration of one dollar (\$1.00) and to execute deeds, agreements, and such other documents as may be necessary to implement the intent of this resolution; and, be it further

RESOLVED, that the County Comptroller be, and hereby is, directed to draw a check payable to the owner(s) of the Property acquired in payment thereof, said check to be delivered to the County Attorney who shall obtain proper conveyance and approve title before delivery of said check, and that said sum be, and hereby is, made a charge upon the proper fund or funds.

ADOPTED 2/3/2026



I hereby certify that the foregoing is a true and exact copy of the legislation duly adopted by the County Legislature of Onondaga County on the 3rd day of February 2026.

A handwritten signature in blue ink that reads "Adams". The signature is stylized with a large, sweeping initial "A".

Clerk, County Legislature

Short Environmental Assessment Form

Part 1 - Project Information

Instructions for Completing

Part 1 – Project Information. The applicant or project sponsor is responsible for the completion of Part 1. Responses become part of the application for approval or funding, are subject to public review, and may be subject to further verification. Complete Part 1 based on information currently available. If additional research or investigation would be needed to fully respond to any item, please answer as thoroughly as possible based on current information.

Complete all items in Part 1. You may also provide any additional information which you believe will be needed by or useful to the lead agency; attach additional pages as necessary to supplement any item.

Part 1 – Project and Sponsor Information			
Name of Action or Project: Purchase of land from NYSDOT.			
Project Location (describe, and attach a location map): Tax parcels: 049.-04-24.1 (Stoney Drive, Geddes, NY) and 004.-03-17.1 (Onondaga Blvd, Onondaga, NY).			
Brief Description of Proposed Action: Onondaga County purchase of two vacant wooded parcels owned by NYSDOT located in the Towns of Geddes and Onondaga to be forever wild and open to the public.			
Name of Applicant or Sponsor: Onondaga County Parks Department		Telephone: 315-451-7275 E-Mail: brian Kelley@ongov.net	
Address: 106 Lake Drive			
City/PO: Liverpool		State: NY	Zip Code: 13088
1. Does the proposed action only involve the legislative adoption of a plan, local law, ordinance, administrative rule, or regulation? If Yes, attach a narrative description of the intent of the proposed action and the environmental resources that may be affected in the municipality and proceed to Part 2. If no, continue to question 2.		NO	YES
		<input checked="" type="checkbox"/>	<input type="checkbox"/>
2. Does the proposed action require a permit, approval or funding from any other government Agency? If Yes, list agency(s) name and permit or approval:		NO	YES
		<input checked="" type="checkbox"/>	<input type="checkbox"/>
3. a. Total acreage of the site of the proposed action?		3.21 acres	
b. Total acreage to be physically disturbed?		0 acres	
c. Total acreage (project site and any contiguous properties) owned or controlled by the applicant or project sponsor?		0 acres	
4. Check all land uses that occur on, are adjoining or near the proposed action:			
5. <input type="checkbox"/> Urban <input type="checkbox"/> Rural (non-agriculture) <input type="checkbox"/> Industrial <input type="checkbox"/> Commercial <input checked="" type="checkbox"/> Residential (suburban)			
<input type="checkbox"/> Forest <input type="checkbox"/> Agriculture <input type="checkbox"/> Aquatic <input checked="" type="checkbox"/> Other(Specify): Wooded land among suburban development			
<input type="checkbox"/> Parkland			

5. Is the proposed action,	NO	YES	N/A
a. A permitted use under the zoning regulations?	<input type="checkbox"/>	<input type="checkbox"/>	<input checked="" type="checkbox"/>
b. Consistent with the adopted comprehensive plan?	<input type="checkbox"/>	<input type="checkbox"/>	<input checked="" type="checkbox"/>
6. Is the proposed action consistent with the predominant character of the existing built or natural landscape?	NO	YES	
	<input type="checkbox"/>	<input checked="" type="checkbox"/>	
7. Is the site of the proposed action located in, or does it adjoin, a state listed Critical Environmental Area?	NO	YES	
If Yes, identify: _____	<input checked="" type="checkbox"/>	<input type="checkbox"/>	
8. a. Will the proposed action result in a substantial increase in traffic above present levels?	NO	YES	
	<input checked="" type="checkbox"/>	<input type="checkbox"/>	
b. Are public transportation services available at or near the site of the proposed action?			
	<input checked="" type="checkbox"/>	<input type="checkbox"/>	
c. Are any pedestrian accommodations or bicycle routes available on or near the site of the proposed action?			
	<input checked="" type="checkbox"/>	<input type="checkbox"/>	
9. Does the proposed action meet or exceed the state energy code requirements?	NO	YES	
If the proposed action will exceed requirements, describe design features and technologies: N/A; land transfer only. _____	<input type="checkbox"/>	<input type="checkbox"/>	
10. Will the proposed action connect to an existing public/private water supply?	NO	YES	
If No, describe method for providing potable water: _____ N/A; land transfer only. _____	<input type="checkbox"/>	<input type="checkbox"/>	
11. Will the proposed action connect to existing wastewater utilities?	NO	YES	
If No, describe method for providing wastewater treatment: _____ N/A; land transfer only. _____	<input type="checkbox"/>	<input type="checkbox"/>	
12. a. Does the project site contain, or is it substantially contiguous to, a building, archaeological site, or district which is listed on the National or State Register of Historic Places, or that has been determined by the Commissioner of the NYS Office of Parks, Recreation and Historic Preservation to be eligible for listing on the State Register of Historic Places?	NO	YES	
	<input checked="" type="checkbox"/>	<input type="checkbox"/>	
b. Is the project site, or any portion of it, located in or adjacent to an area designated as sensitive for archaeological sites on the NY State Historic Preservation Office (SHPO) archaeological site inventory?			
	<input checked="" type="checkbox"/>	<input type="checkbox"/>	
13. a. Does any portion of the site of the proposed action, or lands adjoining the proposed action, contain wetlands or other waterbodies regulated by a federal, state or local agency?	NO	YES	
	<input checked="" type="checkbox"/>	<input type="checkbox"/>	
b. Would the proposed action physically alter, or encroach into, any existing wetland or waterbody?			
	<input checked="" type="checkbox"/>	<input type="checkbox"/>	
If Yes, identify the wetland or waterbody and extent of alterations in square feet or acres: _____ _____ _____			

14. Identify the typical habitat types that occur on, or are likely to be found on the project site. Check all that apply:		
<input type="checkbox"/> Shoreline <input checked="" type="checkbox"/> Forest <input type="checkbox"/> Agricultural/grasslands <input checked="" type="checkbox"/> Early mid-successional <input type="checkbox"/> Wetland <input type="checkbox"/> Urban <input type="checkbox"/> Suburban		
15. Does the site of the proposed action contain any species of animal, or associated habitats, listed by the State or Federal government as threatened or endangered?	NO	YES
	<input checked="" type="checkbox"/>	<input type="checkbox"/>
16. Is the project site located in the 100-year flood plan?	NO	YES
	<input checked="" type="checkbox"/>	<input type="checkbox"/>
17. Will the proposed action create storm water discharge, either from point or non-point sources? If Yes,	NO	YES
	<input checked="" type="checkbox"/>	<input type="checkbox"/>
a. Will storm water discharges flow to adjacent properties?	<input checked="" type="checkbox"/>	<input type="checkbox"/>
b. Will storm water discharges be directed to established conveyance systems (runoff and storm drains)? If Yes, briefly describe:	<input checked="" type="checkbox"/>	<input type="checkbox"/>

18. Does the proposed action include construction or other activities that would result in the impoundment of water or other liquids (e.g., retention pond, waste lagoon, dam)? If Yes, explain the purpose and size of the impoundment:	NO	YES
	<input checked="" type="checkbox"/>	<input type="checkbox"/>

19. Has the site of the proposed action or an adjoining property been the location of an active or closed solid waste management facility? If Yes, describe:	NO	YES
	<input checked="" type="checkbox"/>	<input type="checkbox"/>

20. Has the site of the proposed action or an adjoining property been the subject of remediation (ongoing or completed) for hazardous waste? If Yes, describe:	NO	YES
	<input checked="" type="checkbox"/>	<input type="checkbox"/>

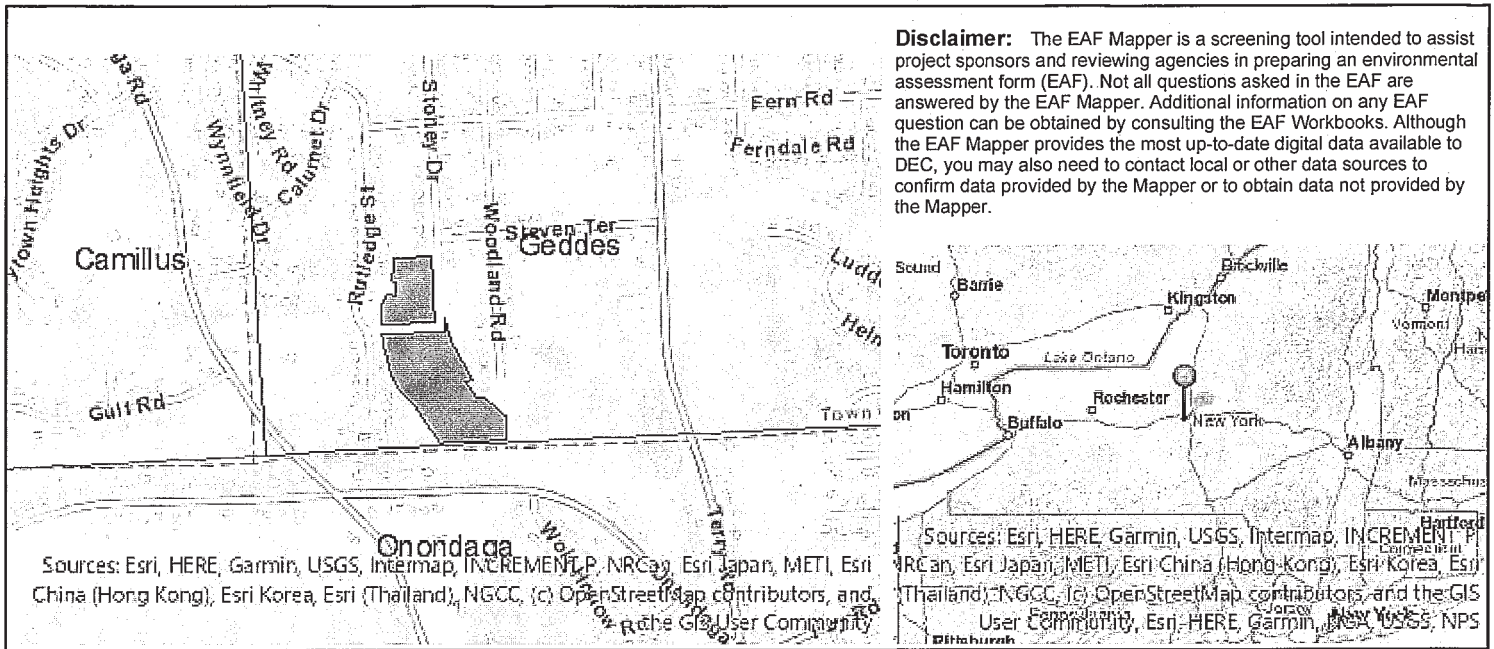
I CERTIFY THAT THE INFORMATION PROVIDED ABOVE IS TRUE AND ACCURATE TO THE BEST OF MY KNOWLEDGE

Applicant/sponsor/name: Brian Kelley

Date: December 18, 2025

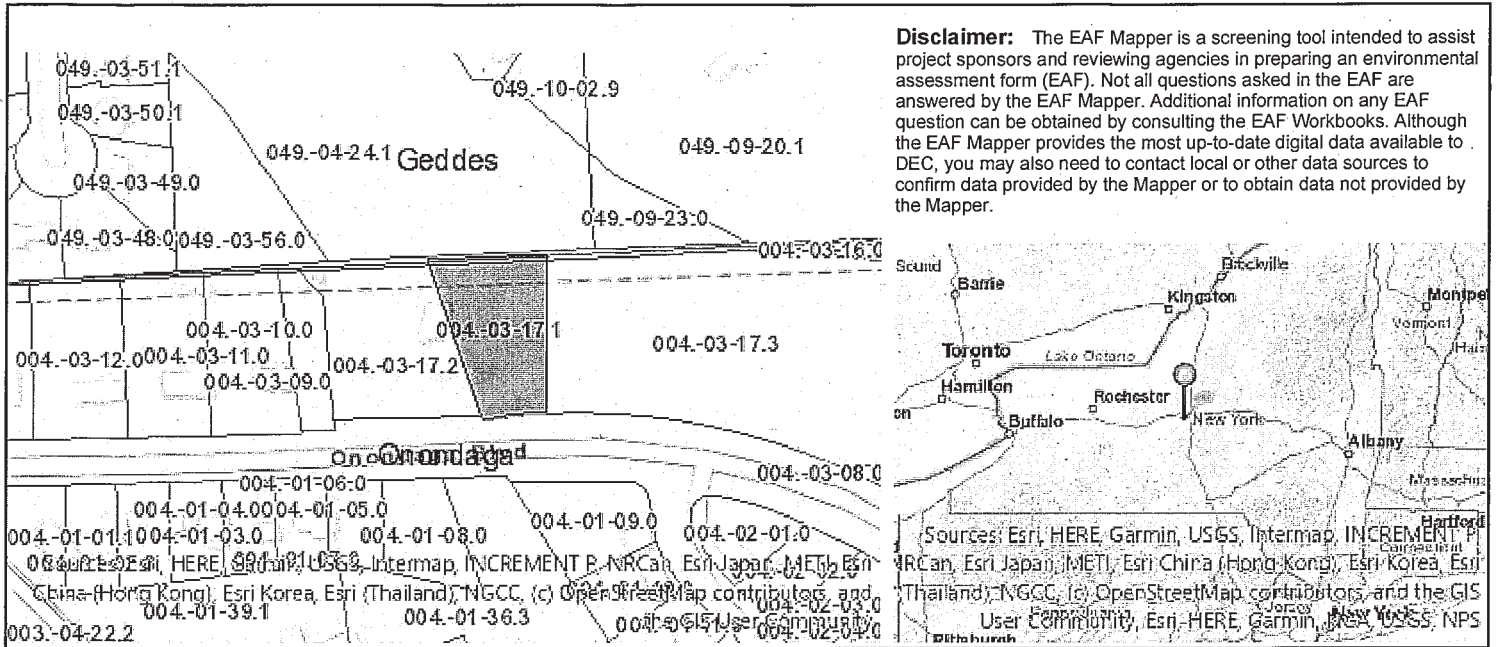
Signature: *Brian J. Kelley*

Title: Commissioner, Onondaga County Park Dept



Disclaimer: The EAF Mapper is a screening tool intended to assist project sponsors and reviewing agencies in preparing an environmental assessment form (EAF). Not all questions asked in the EAF are answered by the EAF Mapper. Additional information on any EAF question can be obtained by consulting the EAF Workbooks. Although the EAF Mapper provides the most up-to-date digital data available to DEC, you may also need to contact local or other data sources to confirm data provided by the Mapper or to obtain data not provided by the Mapper.

Part 1 / Question 7 [Critical Environmental Area]	No
Part 1 / Question 12a [National or State Register of Historic Places or State Eligible Sites]	No
Part 1 / Question 12b [Archeological Sites]	No
Part 1 / Question 13a [Wetlands or Other Regulated Waterbodies]	Digital mapping data are not available or are incomplete. Refer to EAF Workbook.
Part 1 / Question 15 [Threatened or Endangered Animal]	No
Part 1 / Question 16 [100 Year Flood Plain]	No
Part 1 / Question 20 [Remediation Site]	No



Disclaimer: The EAF Mapper is a screening tool intended to assist project sponsors and reviewing agencies in preparing an environmental assessment form (EAF). Not all questions asked in the EAF are answered by the EAF Mapper. Additional information on any EAF question can be obtained by consulting the EAF Workbooks. Although the EAF Mapper provides the most up-to-date digital data available to DEC, you may also need to contact local or other data sources to confirm data provided by the Mapper or to obtain data not provided by the Mapper.

Part 1 / Question 7 [Critical Environmental Area]	No
Part 1 / Question 12a [National or State Register of Historic Places or State Eligible Sites]	No
Part 1 / Question 12b [Archeological Sites]	No
Part 1 / Question 13a [Wetlands or Other Regulated Waterbodies]	Digital mapping data are not available or are incomplete. Refer to EAF Workbook.
Part 1 / Question 15 [Threatened or Endangered Animal]	No
Part 1 / Question 16 [100 Year Flood Plain]	No
Part 1 / Question 20 [Remediation Site]	No

Project: Land purchase from NYSDOT

Date: December 18, 2025

Short Environmental Assessment Form
Part 2 - Impact Assessment

Part 2 is to be completed by the Lead Agency.

Answer all of the following questions in Part 2 using the information contained in Part 1 and other materials submitted by the project sponsor or otherwise available to the reviewer. When answering the questions the reviewer should be guided by the concept "Have my responses been reasonable considering the scale and context of the proposed action?"

	No, or small impact may occur	Moderate to large impact may occur
1. Will the proposed action create a material conflict with an adopted land use plan or zoning regulations?	<input checked="" type="checkbox"/>	<input type="checkbox"/>
2. Will the proposed action result in a change in the use or intensity of use of land?	<input checked="" type="checkbox"/>	<input type="checkbox"/>
3. Will the proposed action impair the character or quality of the existing community?	<input checked="" type="checkbox"/>	<input type="checkbox"/>
4. Will the proposed action have an impact on the environmental characteristics that caused the establishment of a Critical Environmental Area (CEA)?	<input checked="" type="checkbox"/>	<input type="checkbox"/>
5. Will the proposed action result in an adverse change in the existing level of traffic or affect existing infrastructure for mass transit, biking or walkway?	<input checked="" type="checkbox"/>	<input type="checkbox"/>
6. Will the proposed action cause an increase in the use of energy and it fails to incorporate reasonably available energy conservation or renewable energy opportunities?	<input checked="" type="checkbox"/>	<input type="checkbox"/>
7. Will the proposed action impact existing:		
a. public / private water supplies?	<input checked="" type="checkbox"/>	<input type="checkbox"/>
b. public / private wastewater treatment utilities?	<input checked="" type="checkbox"/>	<input type="checkbox"/>
8. Will the proposed action impair the character or quality of important historic, archaeological, architectural or aesthetic resources?	<input checked="" type="checkbox"/>	<input type="checkbox"/>
9. Will the proposed action result in an adverse change to natural resources (e.g., wetlands, waterbodies, groundwater, air quality, flora and fauna)?	<input checked="" type="checkbox"/>	<input type="checkbox"/>
10. Will the proposed action result in an increase in the potential for erosion, flooding or drainage problems?	<input checked="" type="checkbox"/>	<input type="checkbox"/>
11. Will the proposed action create a hazard to environmental resources or human health?	<input checked="" type="checkbox"/>	<input type="checkbox"/>

Project: Land purchase from NYS

Date: December 18, 2025

Short Environmental Assessment Form Part 3 Determination of Significance

For every question in Part 2 that was answered "moderate to large impact may occur", or if there is a need to explain why a particular element of the proposed action may or will not result in a significant adverse environmental impact, please complete Part 3. Part 3 should, in sufficient detail, identify the impact, including any measures or design elements that have been included by the project sponsor to avoid or reduce impacts. Part 3 should also explain how the lead agency determined that the impact may or will not be significant. Each potential impact should be assessed considering its setting, probability of occurring, duration, irreversibility, geographic scope and magnitude. Also consider the potential for short-term, long-term and cumulative impacts.

The Proposed Action is only a transfer of ownership of two parcels owned by the NYSDOT to Onondaga County. There are no other actions to be taken, and the land will be forever wild.

Therefore, in accordance with and pursuant to Article 8 of the Environmental Conservation Law, the County does hereby determine that the Proposed Action will not have a significant adverse impact on the environment.

- Check this box if you have determined, based on the information and analysis above, and any supporting documentation, that the proposed action may result in one or more potentially large or significant adverse impacts and an environmental impact statement is required.
- Check this box if you have determined, based on the information and analysis above, and any supporting documentation, that the proposed action will not result in any significant adverse environmental impacts.

Onondaga County Parks Department
Name of Lead Agency

December 18, 2025
Date

Brian Kelley
Print or Type Name of Responsible Officer in Lead Agency

Commissioner
Title of Responsible Officer


Signature of Responsible Officer in Lead Agency

Signature of Preparer (if different from Responsible Officer)

PRINT FORM

**FEBRUARY 3, 2026
SESSION**

No. 14

LEGISLATORS	AYES:	NOES:	ABSENT:	EXCUSED:	5
1. MAY	✓				
2. MEAKER	✓				
3. BURTIS	✓				
4. THOMPSON	✓				
5. BLOCK			✓		
6. ERIKSEN	✓				
7. ROMEO	✓				
8. RYAN	✓				
10. DENTON	✓				
11. McCARRON	✓				
12. KNAPP	✓				
13. BUSH	✓				
14. KELLY	✓				
15. BROWN	✓				
16. GARLAND	✓				
17. HERNANDEZ	✓				
9. WATTS	✓				
TOTAL:	16	0	1	0	

February 3, 2026

WAIVER

Motion Made By Ms. Watts

RESOLUTION NO. 15

CONFIRMING APPOINTMENTS TO THE ONONDAGA COUNTY SOIL AND WATER
CONSERVATION DISTRICT BOARD

WHEREAS, pursuant to Section 7 of the Soil Conservation District Law, the Onondaga County Legislature has been requested annually to appoint two of its members as Directors to the Onondaga County Soil and Water Conservation District Board; and

WHEREAS, it is the desire of the Onondaga County Legislature to appoint Ken Bush, Jr. and Jeremiah W. Thompson as the Legislature's representatives; now, therefore be it

RESOLVED, that the Onondaga County Legislature hereby confirms the reappointment of the following individuals as Directors of the Onondaga County Soil and Water Conservation District Board for the term specified:

APPOINTMENTS:

Ken Bush, Jr.
17 N. Main Street
Jordan, New York 13080

Jeremiah W. Thompson
PO Box 35672
Liverpool, New York 13088

TERM EXPIRES:

December 31, 2026

December 31, 2026

ADOPTED 2/3/2026



I hereby certify that the foregoing is a true and exact copy of the legislation duly adopted by the County Legislature of Onondaga County on the 3rd day of February 2026.

A handwritten signature in blue ink that reads "Adams".

Clerk, County Legislature

**FEBRUARY 3, 2026
SESSION**

WAIVER

LEGISLATORS	AYES:	NOES:	ABSENT:	EXCUSED:	6
1. MAY	✓				<p><i>Chairwoman Watts relinquished the chair to Ms. Hernandez</i></p> <p><i>Ms. Watts requested a waiver pursuant to Rule 8 to present the following resolution.</i></p> <p><i>There being no objection, the waiver was granted.</i></p>
2. MEAKER	✓				
3. BURTIS	✓				
4. THOMPSON	✓				
5. BLOCK			✓		
6. ERIKSEN	✓				
7. ROMEO	✓				
8. RYAN	✓				
10. DENTON	✓				
11. McCARRON	✓				
12. KNAPP	✓				
13. BUSH	✓				
14. KELLY	✓				
15. BROWN	✓				
16. GARLAND	✓				
17. HERNANDEZ	✓				
9. WATTS	✓				
TOTAL:	16	0	1	0	

**FEBRUARY 3, 2026
SESSION**

No. 15

LEGISLATORS	AYES:	NOES:	ABSENT:	EXCUSED:	6
1. MAY	✓				
2. MEAKER	✓				
3. BURTIS	✓				
4. THOMPSON	✓				
5. BLOCK			✓		
6. ERIKSEN	✓				
7. ROMEO	✓				
8. RYAN	✓				
10. DENTON	✓				
11. McCARRON	✓				
12. KNAPP	✓				
13. BUSH	✓				
14. KELLY	✓				
15. BROWN	✓				
16. GARLAND	✓				
17. HERNANDEZ	✓				
9. WATTS	✓				
TOTAL:	16	0	1	0	

February 3, 2026

Motion Made By Mr. Brown, Mr. Bush

RESOLUTION NO. 16

APPROVING AND DIRECTING THE CORRECTION OF CERTAIN ERRORS ON TAX BILLS

WHEREAS, the following named property owner has filed an application with the County Director of Real Property Tax Services for the correction of errors on the tax roll relative to their premises for tax year 2026; and

WHEREAS, the County Director of Real Property Tax Services, acting as agent of this Legislature, which is the tax levying body of this County, has investigated the circumstances of the claimed errors and has submitted his recommendation that the applications for the corrections be approved; and

WHEREAS, Section 554 of the Real Property Tax Law prescribes the procedure for correction of clerical errors, errors in essential fact, and certain unlawful entries on tax rolls; and

WHEREAS, Section 556 of the Real Property Tax Law prescribes the manner in which refunds shall be charged back to appropriate municipality; now, therefore be it

RESOLVED, that the report of the County Director of Real Property Tax Services be and the same hereby is accepted; and, be it further

RESOLVED, that the Chair of this Legislature be and hereby is authorized and directed to mail a notice of approval to each applicant and order the collecting officers of the appropriate Towns or the Commissioner of Finance, as the case may be, to correct the respective taxes as follows:

<u>NAME AND ADDRESS OF APPLICANT</u>	<u>TAX MAP NUMBER</u>	<u>AMOUNT OF TAX BILLED</u>	<u>CORRECTED TAX</u>
<u>CAMILLUS</u>			
David & Joy Ahles 1103 Rail Fence Rd Camillus, NY 13031	021.-06-02.0	\$10,440.59	\$5,440.59
Donald & Debby Crumb 1105 Rail Fence Rd Camillus, NY 13031	021.-06-03.0	\$10,639.13	\$5,639.13
<u>ELBRIDGE</u>			
Hailey Channing & Scott Roberts 1835 Hall Rd Memphis, NY 13112	028.-04-04.1	\$7,691.03	\$2,398.71
Terri Doolittle Living Trust 1823 Hall Road Memphis, NY 13112	028.-04-05.0	\$6,752.29	\$2,269.17

MANLIUS

Eagle Hill Farm LLC
8390 E Seneca Tpke
Manlius, NY 13104

115.-05-07.4

\$13,925.27

\$5,297.30

SKANEATELES

Peter & Renee Teller
1818 W Lake Road
Skaneateles, NY 13152

062.-01-08.1

\$29,328.65

\$21,996.50

ADOPTED 2/3/2026



I hereby certify that the foregoing is a true and exact copy of the legislation duly adopted by the County Legislature of Onondaga County on the 3rd day of February 2026.

A handwritten signature in blue ink that reads "Adams". The signature is stylized with a large initial "A" and a horizontal line extending to the right.

Clerk, County Legislature

**FEBRUARY 3, 2026
SESSION**

No. 16

LEGISLATORS	AYES:	NOES:	ABSENT:	EXCUSED:	7
1. MAY	✓				<i>Mr. Bush requested to be added as a cosponsor.</i>
2. MEAKER	✓				
3. BURTIS	✓				
4. THOMPSON	✓				
5. BLOCK			✓		
6. ERIKSEN	✓				
7. ROMEO	✓				
8. RYAN	✓				
10. DENTON	✓				
11. McCARRON	✓				
12. KNAPP	✓				
13. BUSH	✓				
14. KELLY	✓				
15. BROWN	✓				
16. GARLAND	✓				
17. HERNANDEZ	✓				
9. WATTS	✓				
TOTAL:	16	0	1	0	

February 3, 2026

Motion Made By Mr. Brown, Ms. Hernandez

RESOLUTION NO. 17

APPROVING AND DIRECTING THE CORRECTION OF CERTAIN ERRORS ON TAX BILLS

WHEREAS, the following named property owner has filed an application with the County Director of Real Property Tax Services for the correction of errors on the tax roll relative to their premises for tax year 2026; and

WHEREAS, the County Director of Real Property Tax Services, acting as agent of this Legislature, which is the tax levying body of this County, has investigated the circumstances of the claimed errors and has submitted his recommendation that the applications for the corrections be approved; and

WHEREAS, Section 554 of the Real Property Tax Law prescribes the procedure for correction of clerical errors, errors in essential fact, and certain unlawful entries on tax rolls; and

WHEREAS, Section 556 of the Real Property Tax Law prescribes the manner in which refunds shall be charged back to appropriate municipality; now, therefore be it

RESOLVED, that the report of the County Director of Real Property Tax Services be and the same hereby is accepted; and, be it further

RESOLVED, that the Chairman of this Legislature be and he hereby is authorized and directed to mail a notice of approval to each applicant and order the collecting officers of the appropriate Towns or the Commissioner of Finance, as the case may be, to correct the respective taxes as follows:

<u>NAME AND ADDRESS OF APPLICANT</u>	<u>TAX MAP NUMBER</u>	<u>AMOUNT OF TAX BILLED</u>	<u>CORRECTED TAX</u>
<u>DEWITT</u>			
Drumlins Inc. 800 Nottingham Rd Syracuse, NY 13224	071.-03-01.1	\$130,519.52	\$65,386.65
<u>LYSANDER</u>			
Darren Deretz 210 Stonybrook Rd. Orangeville, PA 17859	078.-12-14.0	\$7,815.64	\$2,124.28

ADOPTED 2/3/2026



I hereby certify that the foregoing is a true and exact copy of the legislation duly adopted by the County Legislature of Onondaga County on the 3rd day of February 2026.

Clerk, County Legislature

**FEBRUARY 3, 2026
SESSION**

No. 17

LEGISLATORS	AYES:	NOES:	ABSENT:	EXCUSED:	8
1. MAY	✓				<i>Ms. Hernandez requested to be added as a cosponsor.</i>
2. MEAKER	✓				
3. BURTIS	✓				
4. THOMPSON	✓				
5. BLOCK			✓		
6. ERIKSEN	✓				
7. ROMEO	✓				
8. RYAN	✓				
10. DENTON	✓				
11. McCARRON	✓				
12. KNAPP	✓				
13. BUSH	✓				
14. KELLY	✓				
15. BROWN	✓				
16. GARLAND	✓				
17. HERNANDEZ	✓				
9. WATTS	✓				
TOTAL:	16	0	1	0	

February 3, 2026

Motion Made By Mr. Brown

RESOLUTION NO. 18

DIRECTING A PUBLIC HEARING TO CONSIDER INCREASING THE INCOME
LIMITATION RELATIVE TO PARTIAL EXEMPTION FROM REAL PROPERTY TAXES
FOR PERSONS 65 YEARS OF AGE AND OLDER

WHEREAS, the Onondaga County Legislature adopted Resolution No. 175-67 and amendments thereto granting partial exemption from real property taxation for real property owned by certain persons with limited income who are 65 years of age and older, pursuant to Section 467 of the New York State Real Property Tax Law; and

WHEREAS, New York State Assembly Bill 3698-A of 2025, signed by the Governor, amends Section 467 of the Real Property Tax Law by permitting an increase in the maximum household income eligibility levels for the real property tax sliding scale exemption for senior citizens; and

WHEREAS, Onondaga County has kept pace with the exemption over the years to assist the quality of life for eligible senior citizens; and

WHEREAS, if adopted, the new household income guidelines for the real property tax sliding scale exemption, effective for roll year 2026, are as follows:

<u>EXEMPTION</u>	<u>INCOME LIMIT(S)</u>
65%	\$46,999.99
60%	\$47,999.99
55%	\$48,999.99
50%	\$49,999.99
45%	\$50,999.99
40%	\$51,999.99
35%	\$52,999.99
30%	\$53,899.99
25%	\$54,799.99
20%	\$55,699.99
15%	\$56,599.99
10%	\$57,499.99
5%	\$58,399.99

WHEREAS, it is the desire of this Legislature to increase the senior citizens' property tax exemption to the maximum eligible under the law; and

WHEREAS, Section 467 of the Real Property Tax Law requires a public hearing be held prior to enactment of a resolution increasing the maximum income limitation; now, therefore be it

RESOLVED, that a public hearing for the purpose of considering the aforementioned, as authorized by Section 467 of the Real Property Tax Law, shall be held in the Legislative Chambers in the Onondaga County Court House, Syracuse, New York, on the 3rd day of March at 11:30 A.M., upon due notice prescribed by law.

ADOPTED 2/3/2026



I hereby certify that the foregoing is a true and exact copy of the legislation duly adopted by the County Legislature of Onondaga County on the 3rd day of February 2026.

A handwritten signature in blue ink, appearing to read "Adams", is written over a horizontal line.

Clerk, County Legislature

**FEBRUARY 3, 2026
SESSION**

No. 18

LEGISLATORS	AYES:	NOES:	ABSENT:	EXCUSED:	9
1. MAY	✓				
2. MEAKER	✓				
3. BURTIS	✓				
4. THOMPSON	✓				
5. BLOCK			✓		
6. ERIKSEN	✓				
7. ROMEO	✓				
8. RYAN	✓				
10. DENTON	✓				
11. McCARRON	✓				
12. KNAPP	✓				
13. BUSH	✓				
14. KELLY	✓				
15. BROWN	✓				
16. GARLAND	✓				
17. HERNANDEZ	✓				
9. WATTS	✓				
TOTAL:	16	0	1	0	

February 3, 2026

Motion Made By Mr. Brown

RESOLUTION NO. 19

CONFIRMING APPOINTMENT TO THE ONONDAGA COUNTY BOARD OF ETHICS

WHEREAS, J. Ryan McMahon, II, Onondaga County Executive, has duly appointed and designated the following individual to serve as a member of the Onondaga County Board of Ethics:

REAPPOINTMENT:

Hon. Anthony J. Paris
123 Wendell Terrace
Syracuse, New York 13203

TERM EXPIRES:

December 31, 2028

and

WHEREAS, such appointment is made pursuant to Local Law No. 5-2023, subject to confirmation by the Onondaga County Legislature; now, therefore be it

RESOLVED, that the Onondaga County Legislature does hereby confirm the appointment of the above individual to serve as a member of the Onondaga County Board of Ethics for the term specified above or until subsequent action by the County Executive.

ADOPTED 2/3/2026



I hereby certify that the foregoing is a true and exact copy of the legislation duly adopted by the County Legislature of Onondaga County on the 3rd day of February 2026.

A handwritten signature in blue ink, appearing to read "Adams", is written over a horizontal line.

Clerk, County Legislature

**FEBRUARY 3, 2026
SESSION**

No. 19

LEGISLATORS	AYES:	NOES:	ABSENT:	EXCUSED:	10
1. MAY	✓				
2. MEAKER	✓				
3. BURTIS	✓				
4. THOMPSON	✓				
5. BLOCK			✓		
6. ERIKSEN	✓				
7. ROMEO	✓				
8. RYAN	✓				
10. DENTON	✓				
11. McCARRON	✓				
12. KNAPP	✓				
13. BUSH	✓				
14. KELLY	✓				
15. BROWN	✓				
16. GARLAND	✓				
17. HERNANDEZ	✓				
9. WATTS	✓				
TOTAL:	16	0	1	0	

February 3, 2026

Motion Made By Mr. Brown

RESOLUTION NO. 20

AUTHORIZING THE SETTLEMENT OF THE ACTION FILED WITH THE SUPREME
COURT OF THE STATE OF NEW YORK, COUNTY OF ONONDAGA, BYRD V.
ONONDAGA COUNTY, ET AL.

WHEREAS, on July 1, 2022, Cheree Byrd (“Byrd”) was arrested for petit larceny, arraigned, and remanded to the Onondaga County Justice Center where she was held on bail; and

WHEREAS, during that time, Proactive Healthcare Medicine, PLLC (the “Medical Services Provider”), a subsidiary of NaphCare, Inc., was providing medical and mental health services at the Justice Center; and

WHEREAS, during Byrd’s booking process, a mental health intake screening was performed, resulting in her placement on constant supervision until she received a full medical and mental health assessment by a licensed master social worker who ultimately placed Byrd on suicide watch and issued a mental health referral to see a psychiatrist; and

WHEREAS, Byrd was later diagnosed with schizophrenia and personality disorder, and additional testing yielded positive results for pregnancy and marijuana; and

WHEREAS, on July 6, 2022, Byrd was removed from suicide watch, but remained on daily psychiatric observation, during which time Byrd continued to present with disorganized thinking, delusions, and persecutorial statements; and

WHEREAS, beginning on or about July 27, 2022, Byrd began reporting to medical staff that her water broke, but medical staff later determined she was not in labor; and

WHEREAS, through August 1, 2022, Byrd continued reporting to medical staff that she was in labor, but medical staff again determined that Byrd was not in labor; and

WHEREAS, during routine rounds on August 2, 2022, a sheriff’s deputy discovered Byrd was presenting signs of active labor, and an ambulance was called; and

WHEREAS, after delivery, Byrd’s child was transported to Crouse Hospital, where the child passed away; and

WHEREAS, Byrd subsequently filed suit against the County, four sheriff’s deputies, the Medical Service Provider, and three employees thereof; and

WHEREAS, Plaintiff reached a separate, independent settlement agreement with the Medical Service Provider; and

WHEREAS, Plaintiff agreed to settle all claims against the County for \$100,000; now, therefore be it

RESOLVED, that the County Attorney is hereby authorized to settle this action in the amount of \$100,000, and the Comptroller be and hereby is authorized to draw his warrant charging it against the proper funds; and, be it further

RESOLVED, that this warrant shall be released to the County Attorney upon receipt of the proper Release and Stipulation of Discontinuance.

ADOPTED 2/3/2026



I hereby certify that the foregoing is a true and exact copy of the legislation duly adopted by the County Legislature of Onondaga County on the 3rd day of February 2026.

A handwritten signature in blue ink that reads "Adams". The signature is stylized with a large, sweeping initial "A" and a horizontal line extending to the right.

Clerk, County Legislature

**FEBRUARY 3, 2026
SESSION**

No. 20

LEGISLATORS	AYES:	NOES:	ABSENT:	EXCUSED:	11
1. MAY	✓				
2. MEAKER	✓				
3. BURTIS	✓				
4. THOMPSON	✓				
5. BLOCK			✓		
6. ERIKSEN	✓				
7. ROMEO	✓				
8. RYAN	✓				
10. DENTON	✓				
11. McCARRON	✓				
12. KNAPP	✓				
13. BUSH	✓				
14. KELLY	✓				
15. BROWN	✓				
16. GARLAND	✓				
17. HERNANDEZ	✓				
9. WATTS	✓				
TOTAL:	16	0	1	0	

DEFEATED

February 3, 2026

Motion Made By Mr. Brown

RESOLUTION NO. _____

AUTHORIZING THE SETTLEMENT OF THE ACTION FILED IN THE U.S. DISTRICT COURT NOTHERN DISTRICT OF NEW YORK, RIVAS V. ONONDAGA COUNTY, ET AL.

WHEREAS, in 1993, Hector Rivas (“Rivas”) was convicted of the murder of his former girlfriend; and

WHEREAS, after filing a writ of habeas corpus, his case was remanded, and in 2015 the Second Circuit reversed the conviction and ordered a new trial; and

WHEREAS, while waiting for the new trial, Rivas died in prison; and

WHEREAS, in 2019, the administrator of the Rivas estate filed a civil action in the Northern District of New York seeking compensatory and punitive damages for violation of Rivas’ civil rights under the 4th and 14th Amendments of the U.S. Constitution; and

WHEREAS, Plaintiff’s pretrial demand was for \$4,200,000; and

WHEREAS, mandatory mediation was conducted on December 2, 2025, and the parties agreed to a settlement amount of \$1,000,000; now, therefore be it

RESOLVED, that the County Attorney is hereby authorized to settle this action in the amount of \$1,000,000, and the Comptroller be and hereby is authorized to draw his warrant charging it against the proper funds; and, be it further

RESOLVED, that this warrant shall be released to the County Attorney upon receipt of the proper Release and Stipulation of Discontinuance.

DEFEATED

**FEBRUARY 3, 2026
SESSION**

DEFEATED

LEGISLATORS	AYES:	NOES:	ABSENT:	EXCUSED:	12
1. MAY		✓			<i>Mr. Eriksen was excused from voting by the Chair</i>
2. MEAKER		✓			
3. BURTIS		✓			
4. THOMPSON	✓				
5. BLOCK			✓		
6. ERIKSEN				✓	
7. ROMEO	✓				
8. RYAN	✓				
10. DENTON	✓				
11. McCARRON		✓			
12. KNAPP		✓			
13. BUSH		✓			
14. KELLY		✓			
15. BROWN	✓				
16. GARLAND	✓				
17. HERNANDEZ	✓				
9. WATTS	✓				
TOTAL:	8	7	1	1	

February 3, 2026
Motion Made By Mr. Garland

RESOLUTION NO. 21

A RESOLUTION AUTHORIZING CERTAIN DEPUTY SHERIFF'S OF THE ONONDAGA COUNTY SHERIFF'S DEPARTMENT TO PARTICIPATE IN THE OPTIONAL TWENTY-YEAR RETIREMENT PLAN PROVIDED FOR UNDER SECTION 552 OF THE NEW YORK STATE RETIREMENT AND SOCIAL SECURITY LAW

WHEREAS, the Onondaga County Sheriff's Department participates in and offers Deputy Sheriff's the optional twenty-year retirement plan, established pursuant to Section 552 of the New York State Retirement and Social Security Law; and

WHEREAS, through no negligence or fault of their own, Onondaga County Deputy Sheriff's Brittany E. Dorn, Noah C. Hunt, Daniel D. Lorenzini, Gordon J. Lopez, Tre C. Fesinger, and Christopher L. Van Dusen, failed to make timely applications to participate in said optional twenty-year retirement plan; and

WHEREAS, by New York State Assembly Bill No. 7934, signed by the Governor on November 21, 2025, Onondaga County is authorized to make participation in the optional twenty-year retirement plan available to the Deputy Sheriff's contemplated herein; now, therefore be it

RESOLVED, that the Onondaga County Sheriff's Department make participation in the optional twenty-year retirement plan available to Deputy Sheriff's Brittany E. Dorn, Noah C. Hunt, Daniel D. Lorenzini, Gordon J. Lopez, Tre C. Fesinger, and Christopher L. Van Dusen; and, be it further

RESOLVED, that the Clerk of this Legislature prepare a certification that such Deputy Sheriff's did not bar themselves from participation in the retirement plan as a result of their own negligence; and, be it further

RESOLVED, that the Clerk of this Legislature file this resolution and the aforementioned certification with the New York State Comptroller within 90 days of adoption hereof; and, be it further

RESOLVED, that after such filing, the Deputy Sheriff's herein named may individually elect to be covered by the provisions of Section 552 of the New York State Retirement and Social Security Law and shall be entitled to the full rights and benefits associated with coverage under such section, by filing a request with the state no later than November 21, 2026.

ADOPTED 2/3/2026



I hereby certify that the foregoing is a true and exact copy of the legislation duly adopted by the County Legislature of Onondaga County on the 3rd day of February 2026.

A handwritten signature in blue ink, appearing to read "Adams", is written over a horizontal line.

Clerk, County Legislature

**FEBRUARY 3, 2026
SESSION**

No. 21

LEGISLATORS	AYES:	NOES:	ABSENT:	EXCUSED:	13
1. MAY	✓				
2. MEAKER	✓				
3. BURTIS	✓				
4. THOMPSON	✓				
5. BLOCK			✓		
6. ERIKSEN	✓				
7. ROMEO	✓				
8. RYAN	✓				
10. DENTON	✓				
11. McCARRON	✓				
12. KNAPP	✓				
13. BUSH	✓				
14. KELLY	✓				
15. BROWN	✓				
16. GARLAND	✓				
17. HERNANDEZ	✓				
9. WATTS	✓				
TOTAL:	16	0	1	0	

February 3, 2026

WAIVER

Motion Made By Ms. Hernandez, Mr. Thompson, Mr. Eriksen,
Mr. Romeo, Mr. Ryan, Ms. Denton, Mr. Brown, Mr. Garland

RESOLUTION NO. 22

MEMORIALIZING THE UNITED STATES CONGRESS AND ONONDAGA COUNTY TO
PROTECT OUR NEIGHBORS FROM MISCONDUCT AND OVERREACH BY FEDERAL
IMMIGRATION OFFICIALS

WHEREAS, federal agencies, including the Department of Homeland Security (“DHS”), Customs and Border Protection (“CBP”), and Immigration and Customs Enforcement (“ICE”), are carrying out unprecedented and militarized operations around the country; and

WHEREAS, these operations have involved stakeouts, raids, and clashes with protestors; and

WHEREAS, their actions have included systemic racial profiling, whereby residents are being stopped, interrogated, and detained based on their appearance or accent in violation of their Fourth and Fourteenth Amendment rights; and

WHEREAS, the recent killings of Renee Good and Alex Pretti by federal agents in Minneapolis continue a dangerous and escalating pattern of brutality; and

WHEREAS, these agencies have repeatedly acted outside the bounds of the law and their actions represent an overreach and abuse of power; and

WHEREAS, equal justice under the law is an inherent right granted to all people by the United States Constitution and the infringement of rights should always be objected to; and

WHEREAS, Onondaga County is home to thousands of naturalized citizens and legal foreign-born residents and is proud of its diverse population; and

WHEREAS, dozens of individuals around Central New York, including in Onondaga County, have been arrested, detained, and deported by these agencies, often without judicial warrants; and

WHEREAS, residents of Onondaga County have publicly voiced objections to the conduct of the federal agents carrying out these enforcement actions; and

WHEREAS, it is the desire of this County Legislature to express a zero-tolerance policy for any cruel or inhumane policies and actions taken by DHS, CBP, and ICE in Onondaga County; and

WHEREAS, it is the desire of this Legislature to champion a humane, compassionate approach to immigration policies, including keeping families together and creating pathways to citizenship; and

WHEREAS, this Legislature acknowledges that words alone can never adequately convey the injustices committed against people seeking freedom, safety, and refuge; and

WHEREAS, the Onondaga County Legislature has a moral obligation and lawful duty to serve the interests of our constituents; now, therefore, be it

RESOLVED, the Onondaga County Legislature stands in resolute opposition to these cruel and inhumane actions taken by the federal agencies; and be it further

RESOLVED, the Onondaga County Legislature calls upon Onondaga County government and local law enforcement agencies to commit to limiting, wherever legally possible, any and all assistance to federal immigration officials; and be it further

RESOLVED, this Legislature affirmatively stands for the protection of all residents of our county from federal government overreach and abuses of power; and be it further,

RESOLVED, the Clerk of this Legislature is hereby directed to send a certified copy of this resolution to the members of Congress representing Onondaga County, all County-wide elected officials, and the law enforcement agencies representing residents of Onondaga County.

ADOPTED 2/3/2026



I hereby certify that the foregoing is a true and exact copy of the legislation duly adopted by the County Legislature of Onondaga County on the 3rd day of February 2026.

A handwritten signature in blue ink, appearing to read "Adams", is written over a horizontal line.

Clerk, County Legislature

**FEBRUARY 3, 2026
SESSION**

WAIVER

LEGISLATORS	AYES:	NOES:	ABSENT:	EXCUSED:	14
1. MAY		✓			<p><i>Ms. Hernandez requested a waiver to present the following resolution.</i></p> <p><i>Mr. May objected, seconded by Mr. Burtis.</i></p> <p><i>A vote was taken on granting the waiver.</i></p> <p><i>Motion PASSED</i></p>
2. MEAKER		✓			
3. BURTIS		✓			
4. THOMPSON	✓				
5. BLOCK			✓		
6. ERIKSEN	✓				
7. ROMEO	✓				
8. RYAN	✓				
10. DENTON	✓				
11. McCARRON		✓			
12. KNAPP		✓			
13. BUSH		✓			
14. KELLY		✓			
15. BROWN	✓				
16. GARLAND	✓				
17. HERNANDEZ	✓				
9. WATTS	✓				
TOTAL:	9	7	1	0	

**FEBRUARY 3, 2026
SESSION**

No. 22

LEGISLATORS	AYES:	NOES:	ABSENT:	EXCUSED:	14
1. MAY		✓			<i>Mr. Brown, Mr. Ryan, Ms. Denton, Mr. Thompson, Mr. Garland, Mr. Romeo, and Mr. Eriksen requested to be added as cosponsors.</i>
2. MEAKER		✓			
3. BURTIS		✓			
4. THOMPSON	✓				
5. BLOCK			✓		
6. ERIKSEN	✓				
7. ROMEO	✓				
8. RYAN	✓				
10. DENTON	✓				
11. McCARRON		✓			
12. KNAPP		✓			
13. BUSH		✓			
14. KELLY		✓			
15. BROWN	✓				
16. GARLAND	✓				
17. HERNANDEZ	✓				
9. WATTS	✓				
TOTAL:	9	7	1	0	

February 3, 2026

WAIVER

Motion Made By Mr. May, Mr. Meaker

RESOLUTION NO. 23

CONFIRMING APPOINTMENT OF ETHAN LAMONTAGNE AS LEGISLATIVE AIDE OF THE
ONONDAGA COUNTY LEGISLATURE

RESOLVED, that the following person is hereby appointed Legislative Aide of the Onondaga
County Legislature:

ETHAN LAMONTAGNE
305 2nd St., Liverpool, NY 13088

Ethan LaMontagne

Liverpool, NY 13088 ▪ 315.870.0604 ▪ ejlamont44@gmail.com

SKILLS

Microsoft Office | Google Workspace | Data Entry & Analysis | Conversational in Spanish | NYS Seal of Bilingualism - French | Leader | Prioritizes Relationships & Teamwork | Adaptable | Problem-Solver

EXPERIENCE

Onondaga County Board of Elections | Syracuse, NY Jan 2026 - Present
Clerk I

- Process and update voter applications and change of address forms as received from the NYS DMV
- Assist constituents with voter applications, poll working, and the elections process

Onondaga County Legislature | Syracuse, NY June 2024 - Jan 2026
Executive Assistant

- Conduct policy and legislative research to support informed decision-making for county legislators
- Manage scheduling, constituent communications, legislative events, and administrative operations

U.S House of Representatives | Syracuse, NY Feb 2023 - Aug 2023
Office of Congressman Brandon Williams
Intern

- Answer and document constituent calls, providing information and assistance with federal agencies
- Gather information, address concerns, and maintain accurate records in constituent databases

C&S Companies | North Syracuse, NY Feb 2023 - Aug 2023
Government Affairs Assistant

- Support the Government Affairs team in maintaining strong relationships with municipal officials, local businesses, and community stakeholders
- Track local government initiatives and policy developments impacting company projects

EDUCATION

Southern New Hampshire University
School of Arts, Sciences, and Education; NECHE accredited
Bachelor of Arts; Political Science Anticipated June 2026

Onondaga Community College
Associate of Arts; Humanities and Social Sciences Dec 2024

ADDITIONAL EXPERIENCE

Manager / Crumbl Cookies Inc. / Liverpool, NY Feb 2024 - Oct 2024
Student Missionary / SCORE Intl. / Juan Dolio, Dominican Republic Aug 2022 - Jan 2023

**FEBRUARY 3, 2026
SESSION**

WAIVER

LEGISLATORS	AYES:	NOES:	ABSENT:	EXCUSED:	15
1. MAY	✓				<p><i>Mr. May requested a waiver to present the following resolution.</i></p> <p><i>There was no objection and the waiver was granted.</i></p>
2. MEAKER	✓				
3. BURTIS	✓				
4. THOMPSON	✓				
5. BLOCK			✓		
6. ERIKSEN	✓				
7. ROMEO	✓				
8. RYAN	✓				
10. DENTON	✓				
11. McCARRON	✓				
12. KNAPP	✓				
13. BUSH	✓				
14. KELLY	✓				
15. BROWN	✓				
16. GARLAND	✓				
17. HERNANDEZ	✓				
9. WATTS	✓				
TOTAL:	16	0	1	0	

**FEBRUARY 3, 2026
SESSION**

No. 23

LEGISLATORS	AYES:	NOES:	ABSENT:	EXCUSED:	15
1. MAY	✓				<i>Mr. Meaker asked to be included as a cosponsor.</i>
2. MEAKER	✓				
3. BURTIS	✓				
4. THOMPSON	✓				
5. BLOCK			✓		
6. ERIKSEN	✓				
7. ROMEO	✓				
8. RYAN	✓				
10. DENTON	✓				
11. McCARRON	✓				
12. KNAPP	✓				
13. BUSH	✓				
14. KELLY	✓				
15. BROWN	✓				
16. GARLAND	✓				
17. HERNANDEZ	✓				
9. WATTS	✓				
TOTAL:	16	0	1	0	

A LOCAL LAW RELATING TO CERTAIN FEES COLLECTED BY THE ONONDAGA COUNTY
HEALTH DEPARTMENT

BE IT ENACTED BY THE ONONDAGA COUNTY LEGISLATURE OF THE COUNTY OF
ONONDAGA, NEW YORK, AS FOLLOWS:

Section 1. Collection Authorized.

The Onondaga County Commissioner of Health is hereby empowered to collect fees for services, including but not limited to tests, permits, and licenses, and other services as provided by the Onondaga County Health Department, pursuant to the Onondaga County Sanitary Code and New York State Public Health Law, as may be amended.

Section 2. Fees to be Collected.

The fees to be charged are as follows:

<u>Item</u>	<u>Fee</u>
Weights & Measures	
Scales	
Up to and including 15kg (33lb) capacity	\$20.00
Over 15 kg & incl. 300 kg capacity	\$40.00
Petroleum dispensing & Measuring Devices	
Single Dispensing Pump	\$20.00
Dual Dispensing Pump	\$40.00
Blend Dispensing Pump	\$40.00
Stationary Petroleum Metering Systems	
Up to 400 L/Min (106 GPM)	\$100.00
Food Service Establishments & Machinery Issuance	
Restaurants, etc.	
0-25 capacity	\$217.00
26-50 capacity	\$236.00
51-100 capacity	\$273.00
101-150 capacity	\$329.00
150+ capacity	\$360.00
Caterers	\$310.00
Ice Manufacturer	\$130.00
Mobile Food Vendor	\$192.00
Push Cart Food Vendor	\$192.00
Temporary Food Vendor	\$130.00
Vendor Commissary	\$223.00
Vending Machines	\$15.00
Vending Machines (unlimited number)	\$527.00
Frozen Dessert	\$25.00
Special Promotions	\$62.00
Hotel/Motel Permit	
5-9 rooms	\$248.00

10-20 rooms	\$310.00
21-50 rooms	\$372.00
51-100 rooms	\$496.00
101+ rooms	\$682.00
Children's Camps and Sports Camps	\$200.00
Campsites	\$310.00
Mobile Home Parks Permit	
3-25 occupancy	\$242.00
26-50 occupancy	\$310.00
51-75 occupancy	\$378.00
76+ occupancy	\$521.00
Labor Camps Permit	\$310.00
Bathing Beach	\$279.00
Swimming Pools Permit	\$279.00
Rooming House - 3-9 occupancy	\$248.00
Child Care Center Inspection	\$62.00
Water Samples – Restaurant	\$50.00
Water Samples- All Other	\$50.00
Late Fee – Annual Permits	\$60.00
Late Fee – Temporary Permits	\$30.00

Environmental

Special Service Water Sample	\$50.00
Non-municipal Water Supply	\$310.00
Plan review-Realty Subdivision (public facilities)	\$37.00
Plan review-Site Investigation-Subsurface	\$93.00
Plan Review	\$250.00
Additional charge per lot	\$124.00
Plot plan review	\$62.00
Sewage plan review >1000 gal per day flow	\$310.00
Sewage Inspection	\$248.00
Site Inspection	\$93.00
Sewage plan review <1000 gal per day flow	\$310.00
Amended project	\$62.00
Redesigned project	\$186.00
Holding Tanks (commercial)	\$186.00
Revised Plan Review	\$62.00
Site Survey Only	\$105.00
Water Sample and Site Survey	\$161.00
Swimming Pool/Bathing Beaches Plan Review	
New Pool/Beach	\$372.00
Spa Pool Only	\$186.00
Change to Existing Facility	\$62.00
School Water Sampling	\$120.00
Fee for Repair Investigation	\$62.00
Site Investigation Fee	\$93.00
Tanning Permit	\$120.00
Tanning Inspection	\$50.00
Clean Indoor Air Act Waiver Application	\$100.00

Section 3. Procedure to Collect Fees.

The procedures for the collection of such fees shall be as prescribed by the appropriate laws of the State and any amendments thereto, or determined by the Commissioner of Health where the State has not enacted procedures.

Section 4. Effect on Prior Legislation.

Any prior resolution or Local Law pertaining to the fees collected by the Onondaga County Department of Health is hereby amended to the extent necessary to comply with the intent of this Local Law.

Section 5. Effective Date.

This Local Law shall take effect on January 1, 2026, and shall be filed consistent with provisions of the Municipal Home Rule Law.

ADOPTED 2/3/2026



I hereby certify that the foregoing is a true and exact copy of the legislation duly adopted by the County Legislature of Onondaga County on the 3rd day of February 2026.

A handwritten signature in blue ink that reads "Adams".

Clerk, County Legislature

Environmental Health Fee Schedule Updates

PURPOSE:

Update certain fees established or omitted in LL NO. 11 – 2025 to accurately reflect the allowable maximum set by the State of New York.

Fees to be updated:

- Frozen Dessert Permits
- Children’s Camp and Sports Camps Permits
- Campsite Permits
- Tanning Permits
- Non-municipal Water Supply Sample

Fees to be re-added:

- Clean Indoor Air Act Waiver Application
- Push Cart Food Vendor

BACKGROUND:

The attached fee schedule aligns with the state maximum.

BUDGET IMPACTS:

Updating the fee schedule will allow the Division of Environmental Health to collect the maximum fee allowed by the State of New York for services provided by the division. The collection of such fees provides an offset for the cost of providing the associated services.

**FEBRUARY 3, 2026
SESSION**

PASSED

LEGISLATORS

AYES:

NOES:

ABSENT:

EXCUSED:

Local Law A

1. MAY

✓

2. MEAKER

✓

3. BURTIS

✓

4. THOMPSON

✓

5. BLOCK

✓

6. ERIKSEN

✓

7. ROMEO

✓

8. RYAN

✓

10. DENTON

✓

11. McCARRON

✓

12. KNAPP

✓

13. BUSH

✓

14. KELLY

✓

15. BROWN

✓

16. GARLAND

✓

17. HERNANDEZ

✓

9. WATTS

✓

TOTAL:

16

0

1

0

*The meeting was
adjourned at 2:27*